

PSS-2B SERIES – PHASE SHIFTERS, MANUAL

TECHNICAL FEATURE

FEATURES

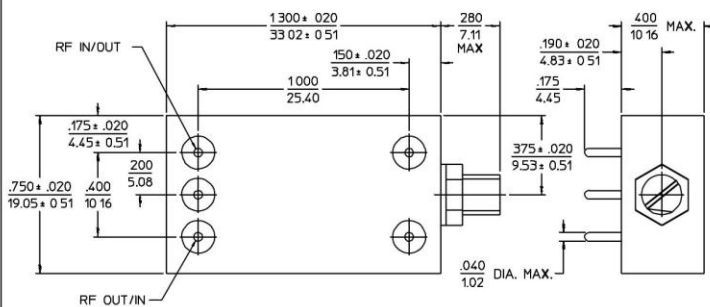
- 10 to 400 MHz
- 0° to 90°
- 10% Bandwidth
- Multi-Turn Adjustments, High Resolution Models
- PC Mount

PRINCIPAL SPECIFICATIONS

Model Number	Center Frequency f_0 , MHz	Usable Bandwidth
PSS-2B-**B	10 to 400	$f_0 \pm 5\%$

For complete Model Number replace ** with desired center Frequency, f_0 in MHz.

Package Outline



NOTES: 1. Tolerance on 3 place decimals $\pm 0.10(0.25)$ except as noted.
2. Dimensions in inches over millimeters.
3. All unmarked pins are internally ground.

General Notes:

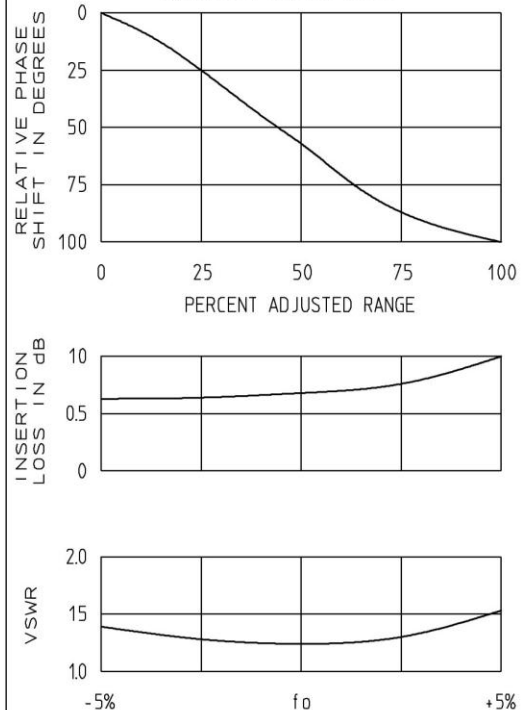
1. The PSS-2B series consists of PC mountable phase shifters with continuous multi-turn adjustment from 0° to at least 90°.
2. This series employs lumped element quadrature hybrids with capacitor tuned LC networks acting as sliding short circuits on the outputs. The electrical length of the short effectively delays the reflected signal that appears at the isolated port of the quadrature hybrid.
3. Similar Phase Shifters are available in a variety of connectorized packages as well as electronically tuned models in flatpacks and surface mounts.

15Feb96

GENERAL SPECIFICATIONS

Phase Shift Range:	90° min. @ f_0
Insertion Loss:	1.5 dB max.
Impedance:	50 Ω nom.
VSWR:	1.6:1 max.
Screw Drive:	Multi-turn
(insertion phase increases with clockwise rotation)	
Turns for max. Shift:	18 turns nom.
CW Power:	0.5 Watts max.
Package:	PC Plug-In
Weight, nominal:	1.1 oz. (31 g)
Operating Temp:	-55° to +85°C

Typical Performance



Crane Aerospace & Electronics

Microwave Solutions – Merrimac Industries
41 Fairfield Place, West Caldwell, NJ 07006
+ 1.973.575.1300 ext. 1309 • mw@crane-eg.com
www.craneae.com/mw

PSS2B.doc. This revision supersedes all previous releases. All technical information is believed to be accurate, but no responsibility is assumed for errors. We reserve the right to make changes in products or specifications without notice. Copyright © 2013 Crane Electronics, Inc. All rights reserved.

