

## SMA TABLE OF CONTENTS

Contents .....	1
Jack Flange Mount Solder Post Contact .....	2
Jack Flange Mount Tab Contact .....	3
Jack Flange Mount Slotted Contact .....	4
Jack Flange Mount Post Contact .....	5
Jack Flange Mount Microstrip .....	6
Jack Flange Mount Right Angle .....	7
Plug Flange Mount Slotted .....	8
Plug Flange Mount Tab Contact .....	8
Plug Flange Mount Solder Post .....	9
Plug Flange Mount Solder Pot Contact.....	9
Press Mount Receptacles.....	10
Bulkhead .....	11-12
Stripline .....	13
Printed Circuit Board .....	14
Printed Circuit Board End Launch .....	15
Jack Flange Mount (Field Replaceable) .....	16
Plug Flange Mount (Field Replaceable) .....	17
Semi-Rigid Cable .....	18-19
Flex Cable Connector .....	20

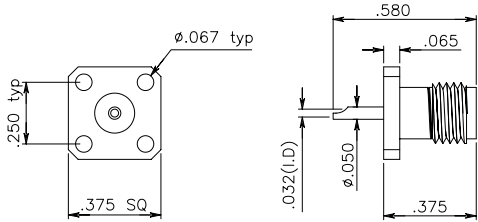
# PANEL JACK RECEPTACLE-SOLDER POT CONTACTS

- \*Add "SG" as a prefix to P/N to order Stainless Steel/Gold.
- \*Add "BG" as a prefix to P/N to order Brass/Gold.
- \*Add "NC" as a prefix to P/N to order W/Out Captivation.
- \*Add "RP" as a prefix to P/N order Reverse Polarity.



SMA

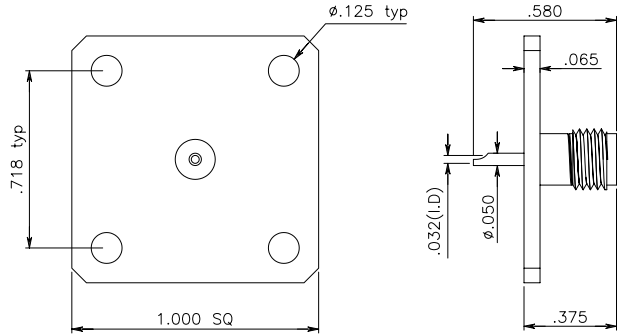
## (3/8" Square Flange)



PART #
SMA 1000-1001

Captive Contact

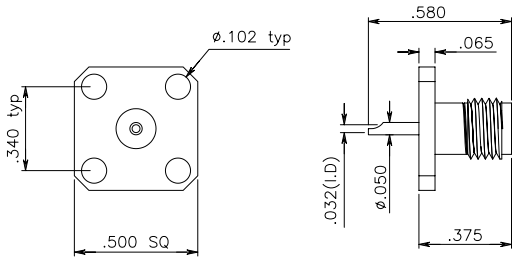
## (1" Square Flange)



PART #
SMA 1000-1004

Captive Contact

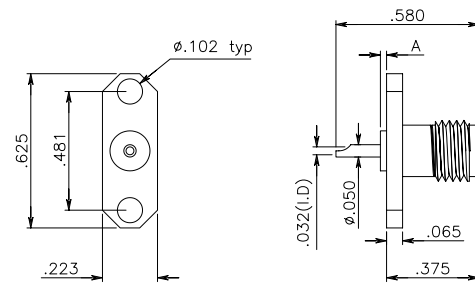
## (1/2" Square Flange)



PART #
SMA 1000-1002

Captive Contact

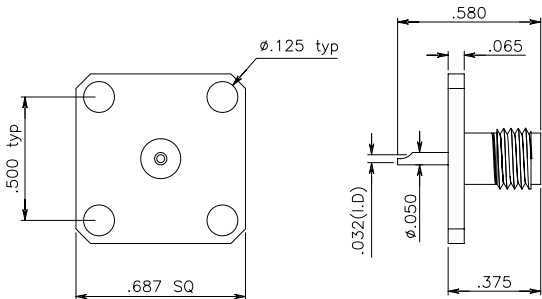
## (2-Hole Flange)



PART #	Dim. A
SMA 1000-1005	.025
SMA 1000-1005-1	.100

Captive Contact

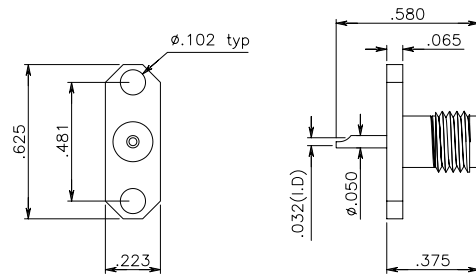
## (11/16" Square Flange)



PART #
SMA 1000-1003

Captive Contact

## (2-Hole Flange)



PART #
SMA 1000-1006

Captive Contact

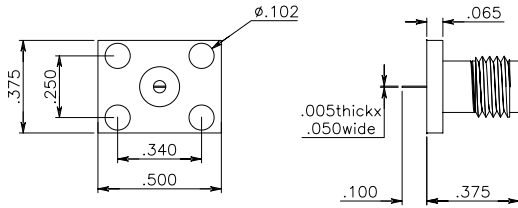
# PANEL JACK RECEPTACLE – TAB CONTACTS



- \*Add "SG" as a prefix to P/N to order Stainless Steel/Gold.
- \*Add "BG" as a prefix to P/N to order Brass/Gold.
- \*Add "NC" as a prefix to P/N to order W/Out Captivation.
- \*Add "RP" as a prefix to P/N order Reverse Polarity.

SMA

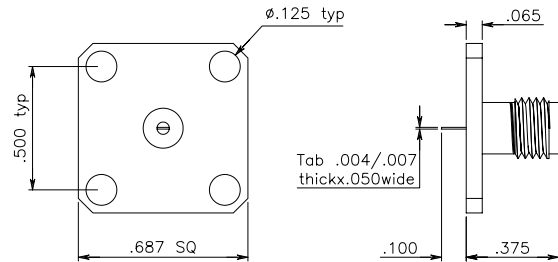
## (.500x.375 Flange)



**PART #**  
SMA 1000-1007

Captive Contact

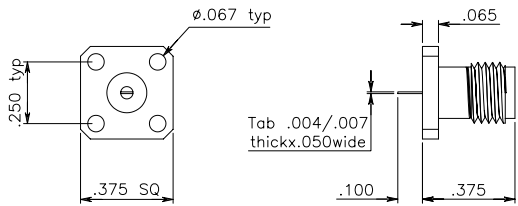
## (11/16" Square Flange)



**PART #**  
SMA 1000-1010

Captive Contact

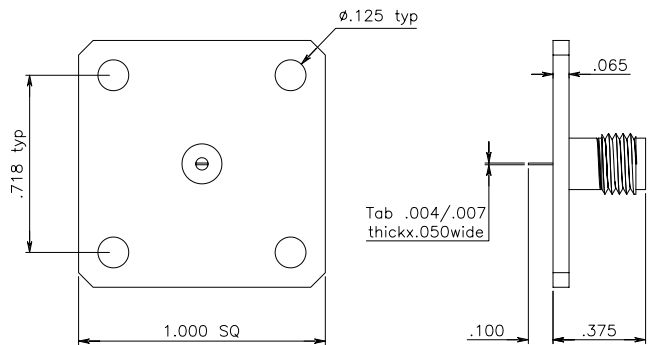
## (3/8" Square Flange)



**PART #**  
SMA 1000-1008

Captive Contact

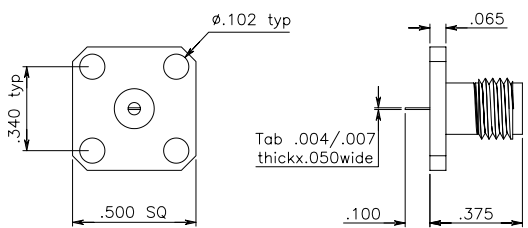
## (1" Square Flange)



**PART #**  
SMA 1000-1011

Captive Contact

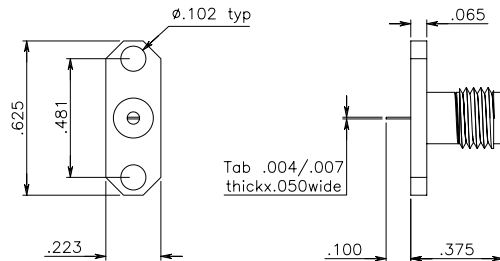
## (1/2" Square Flange)



**PART #**  
SMA 1000-1009

Captive Contact

## (2-Hole Flange)



**PART #**  
SMA 1000-1012

Captive Contact

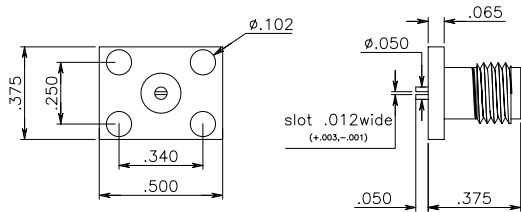
# PANEL JACK RECEPTACLE – SLOTTED CONTACTS



- \*Add "SG" as a prefix to P/N to order Stainless Steel/Gold.
- \*Add "BG" as a prefix to P/N to order Brass/Gold.
- \*Add "NC" as a prefix to P/N to order W/Out Captivation.
- \*Add "RP" as a prefix to P/N order Reverse Polarity.

Available other slot widths:  
.018", .020", .036"

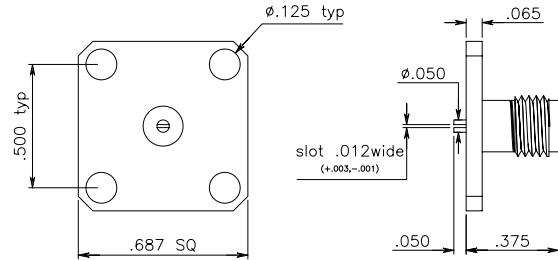
**(.500x.375 Flange)**



**PART #**  
SMA 1000-1013

Captive Contact

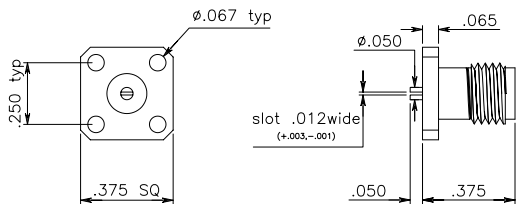
**(11/16" Square Flange)**



**PART #**  
SMA 1000-1016

Captive Contact

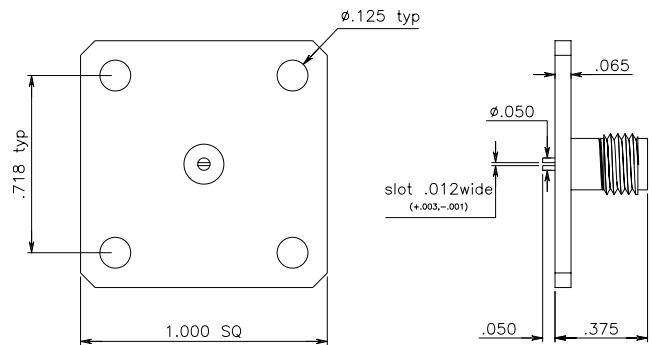
**(3/8" Square Flange)**



**PART #**  
SMA 1000-1014

Captive Contact

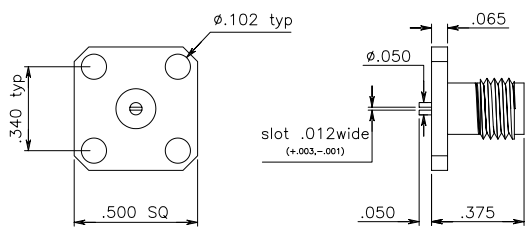
**(1" Square Flange)**



**PART #**  
SMA 1000-1017

Captive Contact

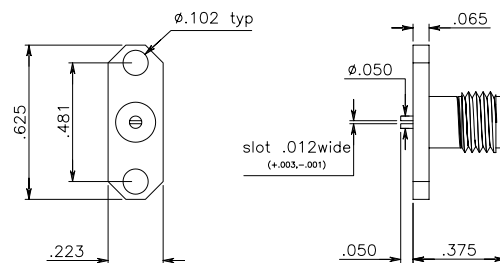
**(1/2" Square Flange)**



**PART #**  
SMA 1000-1015

Captive Contact

**(2-Hole Flange)**



**PART #**  
SMA 1000-1018

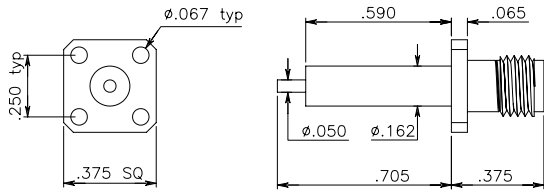
Captive Contact

# PANEL JACK RECEPTACLE – POST CONTACTS



- \*Add "SG" as a prefix to P/N to order Stainless Steel/Gold.
- \*Add "BG" as a prefix to P/N to order Brass/Gold.
- \*Add "NC" as a prefix to P/N to order W/Out Captivation.
- \*Add "RP" as a prefix to P/N order Reverse Polarity.

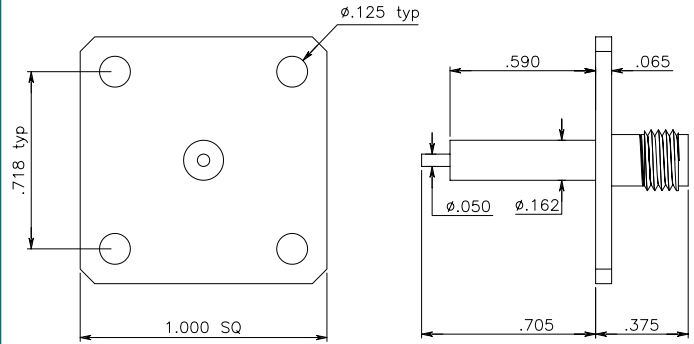
## (3/8" Square Flange)



**PART #**  
SMA 1000-1019

Captive Contact

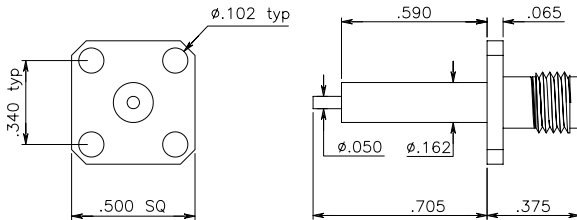
## (1" Square Flange)



**PART #**  
SMA 1000-1022

Captive Contact

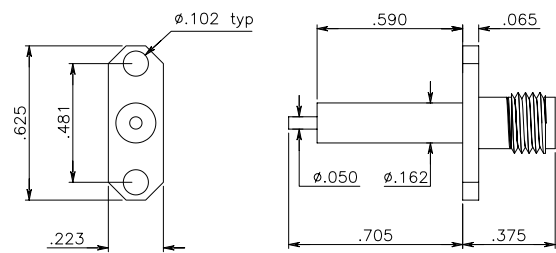
## (1/2" Square Flange)



**PART #**  
SMA 1000-1020

Captive Contact

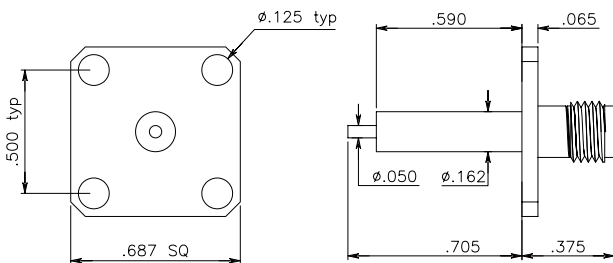
## (2-Hole Flange)



**PART #**  
SMA 1000-1023-1

Captive Contact

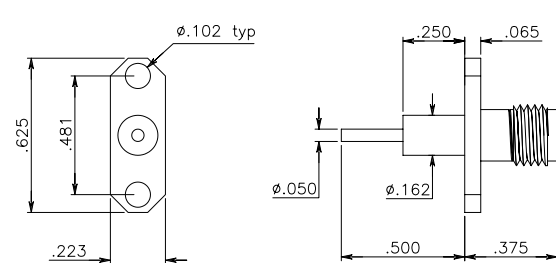
## (11/16" Square Flange)



**PART #**  
SMA 1000-1021

Captive Contact

## (2-Hole Flange)



**PART #**  
SMA 1000-1023-2

Captive Contact

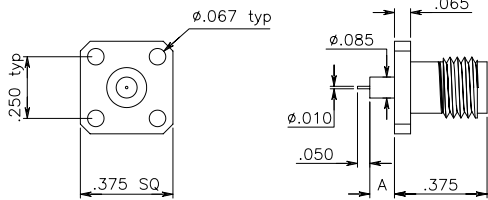
# PANEL JACK RECEPTACLE – POST CONTACT FOR MICROSTRIP



- \*Add "SG" as a prefix to P/N to order Stainless Steel/Gold.
- \*Add "BG" as a prefix to P/N to order Brass/Gold.
- \*Add "NC" as a prefix to P/N to order W/Out Captivation.
- \*Add "RP" as a prefix to P/N order Reverse Polarity.

SMA

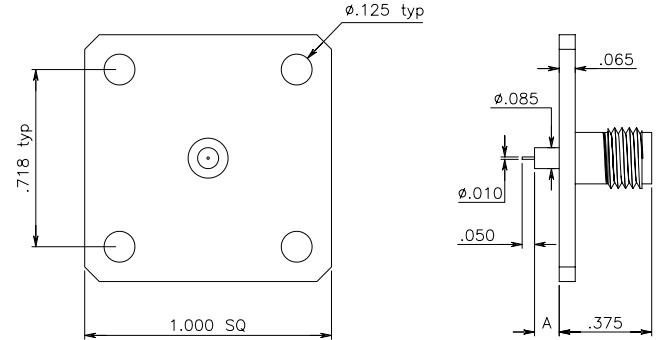
## (3/8" Square Flange)



PART #	Dim. A
SMA 1000-1024	.057
SMA 1000-1024-1	.125

Captive Contact

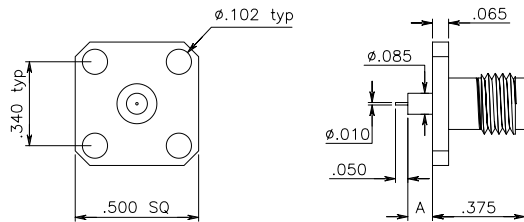
## (1" Square Flange)



PART #	Dim. A
SMA 1000-1027	.057
SMA 1000-1027-1	.125

Captive Contact

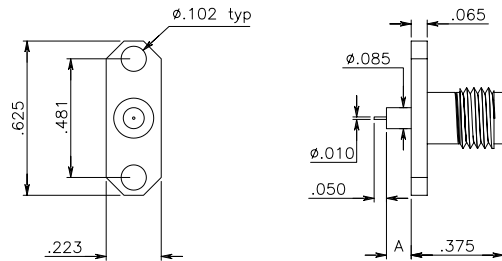
## (1/2" Square Flange)



PART #	Dim. A
SMA 1000-1025	.057
SMA 1000-1025-1	.125

Captive Contact

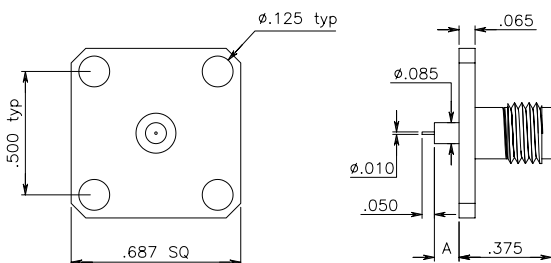
## (2-Hole Flange)



PART #	Dim. A
SMA 1000-1028	.057
SMA 1000-1028-1	.125

Captive Contact

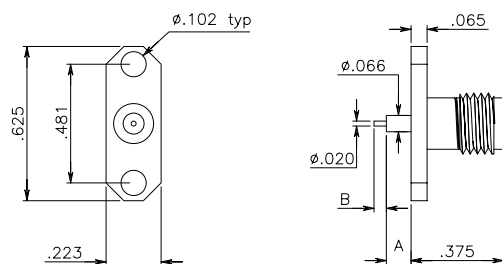
## (11/16" Square Flange)



PART #	Dim. A
SMA 1000-1026	.057
SMA 1000-1026-1	.125

Captive Contact

## (2-Hole Square Flange)



PART #
SMA 1000-1063

Captive Contact

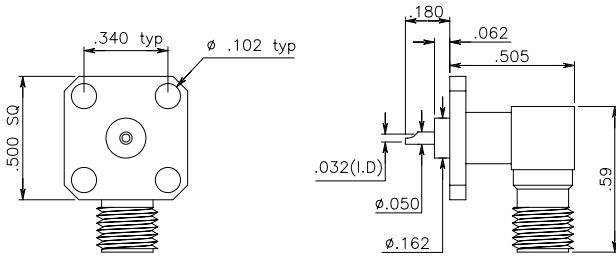
# RIGHT ANGLE PANEL JACK RECEPTACLE

- \*Add "SG" as a prefix to P/N to order Stainless Steel/Gold.
- \*Add "BG" as a prefix to P/N to order Brass/Gold.
- \*Add "NC" as a prefix to P/N to order W/Out Captivation.
- \*Add "RP" as a prefix to P/N order Reverse Polarity.



SMA

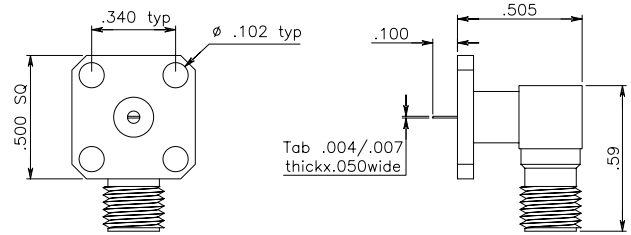
## (1/2" Square Flange) Solder Pot Contact



PART #
SMA 1000-1029

Captive Contact

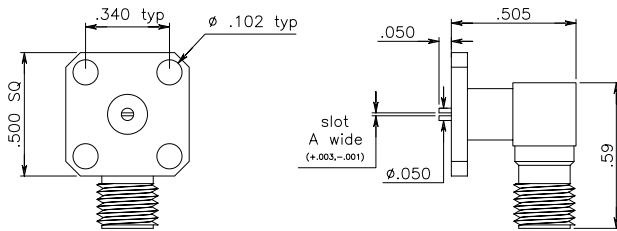
## (1/2" Square Flange) Tab Contact



PART #
SMA 1000-1031

Captive Contact

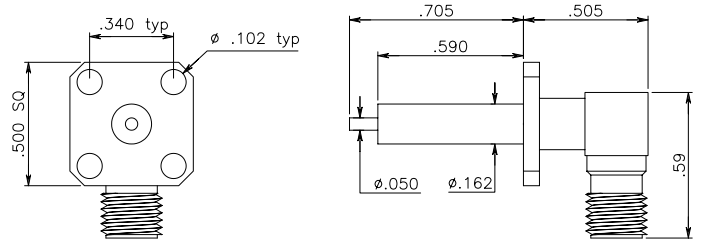
## (1/2" Square Flange) Slotted Contact



PART #	Dim. A
SMA 1000-1030	.012
SMA 1000-1030-1	.018
SMA 1000-1030-2	.028
SMA 1000-1030-3	.036

Captive Contact

## (1/2" Square Flange) Post Contact



PART #
SMA 1000-1032

Captive Contact

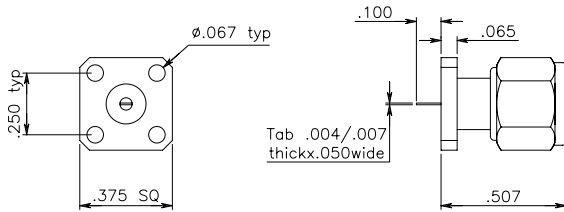
# PANEL PLUG RECEPTACLE – TAB – SLOTTED CONTACTS



- \*Add "SG" as a prefix to P/N to order Stainless Steel/Gold.
- \*Add "BG" as a prefix to P/N to order Brass/Gold.
- \*Add "NC" as a prefix to P/N to order W/Out Captivation.
- \*Add "RP" as a prefix to P/N order Reverse Polarity.

SMA

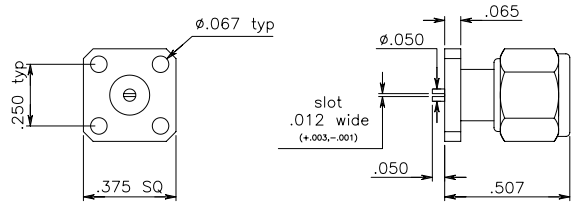
## (3/8" Flange)



**PART #**  
SMA 1000-2001

Captive Contact

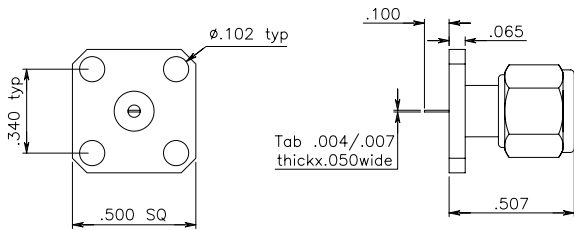
## (3/8" Square Flange)



**PART #**  
SMA 1000-2004

Captive Contact

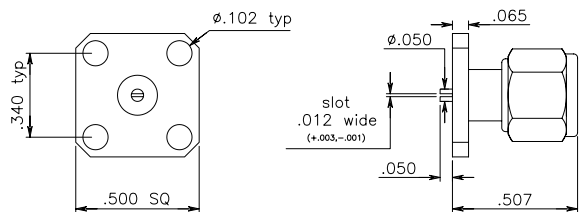
## (1/2" Square Flange)



**PART #**  
SMA 1000-2002

Captive Contact

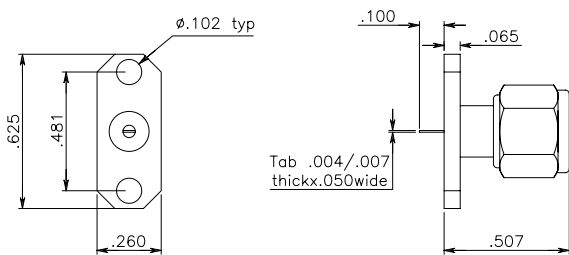
## (1/2" Square Flange)



**PART #**  
SMA 1000-2005

Captive Contact

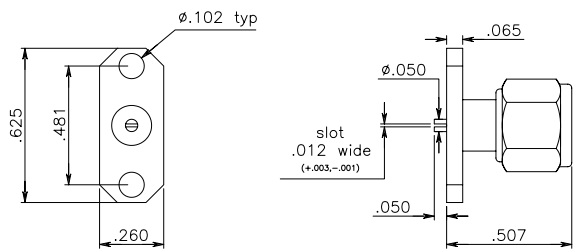
## (2-Hole Flange)



**PART #**  
SMA 1000-2003

Captive Contact

## (2-Hole Flange)



**PART #**  
SMA 1000-2006

Captive Contact



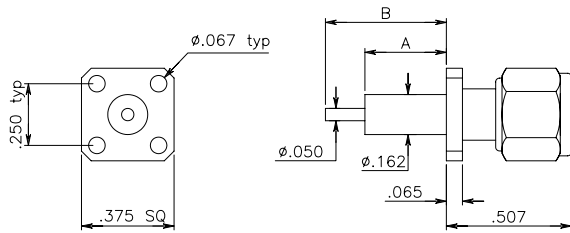
# PANEL PLUG RECEPTACLE – POST – SOLDER POT CONTACT



- \*Add "SG" as a prefix to P/N to order Stainless Steel/Gold.
- \*Add "BG" as a prefix to P/N to order Brass/Gold.
- \*Add "NC" as a prefix to P/N to order W/Out Captivation.
- \*Add "RP" as a prefix to P/N order Reverse Polarity.

SMA

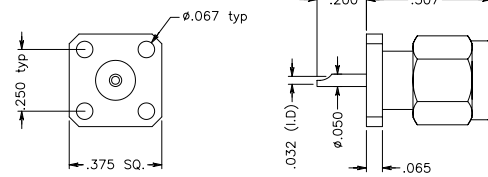
## (3/8" Square Flange)



PART #	Dim. A	Dim. B
SMA 1000-2007	.330	.490
SMA 1000-2007-1	.590	.705

Captive Contact

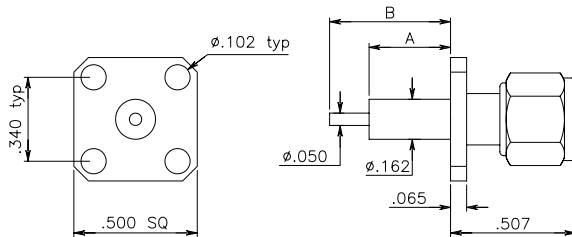
## (3/8" Square Flange)



PART #
SMA 1000-2020

Captive Contact

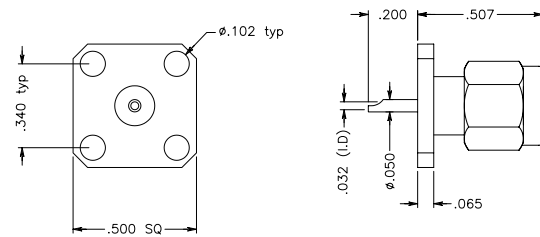
## (1/2" Square Flange)



PART #	Dim. A	Dim. B
SMA 1000-2008	.330	.490
SMA 1000-2008-1	.590	.705

Captive Contact

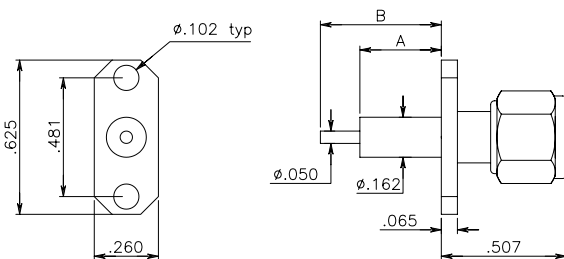
## (1/2" Square Flange)



PART #
SMA 1000-2021

Captive Contact

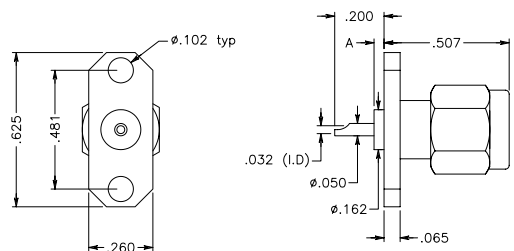
## (2-Hole Flange)



PART #	Dim. A	Dim. B
SMA 1000-2009	.330	.490
SMA 1000-2009-1	.590	.705

Captive Contact

## (2-Hole Flange)



PART #	Dim. A
SMA 1000-2022	.025

Captive Contact

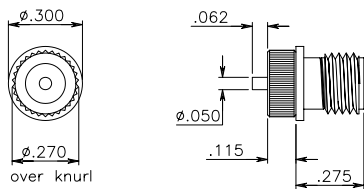
# PRESS MOUNT RECEPTACLES – POST – TAB – POT CONTACTS



- \*Add "SG" as a prefix to P/N to order Stainless Steel/Gold.
- \*Add "BG" as a prefix to P/N to order Brass/Gold.
- \*Add "NC" as a prefix to P/N to order W/Out Captivation.
- \*Add "RP" as a prefix to P/N order Reverse Polarity.

SMA

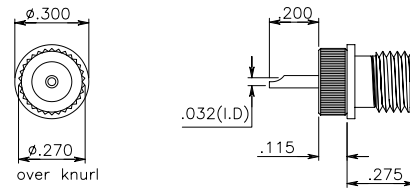
## (Post Contact)



**PART #**  
SMA 1000-1033

Captive Contact

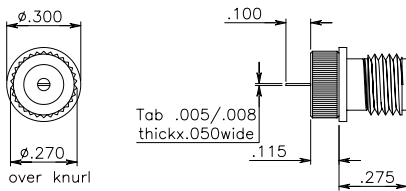
## (Solder Pot Contact)



**PART #**  
SMA 1000-1035

Captive Contact

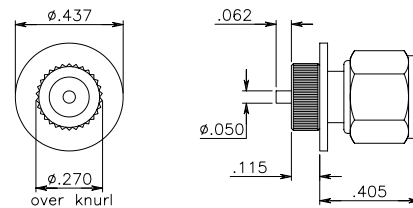
## (Tab Contact)



**PART #**  
SMA 1000-1034

Captive Contact

## (Plug, Post Contact)



**PART #**  
SMA 1000-2014

Captive Contact

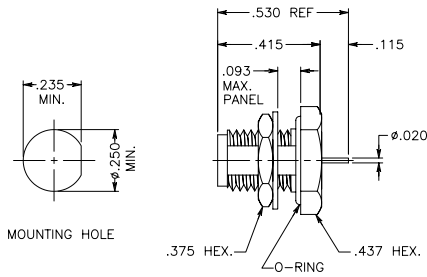
# BULKHEAD JACKS & PLUGS

- \*Add "SG" as a prefix to P/N to order Stainless Steel/Gold.
- \*Add "BG" as a prefix to P/N to order Brass/Gold.
- \*Add "NC" as a prefix to P/N to order W/Out Captivation.
- \*Add "RP" as a prefix to P/N order Reverse Polarity.



SMA

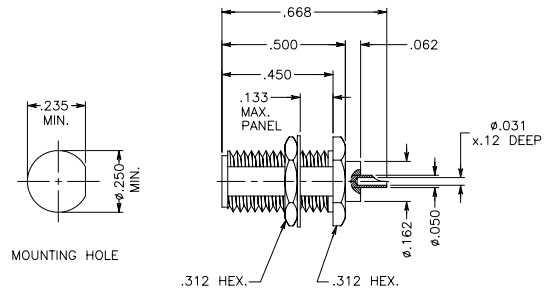
## (Straight Bulkhead Jack) Rear Mount



**PART #**  
SMA 1000-1036

Captive Contact

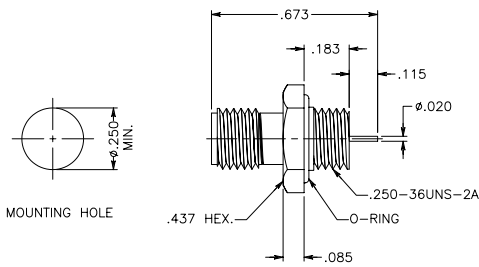
## (Straight Bulkhead Jack) Rear Mount



**PART #**  
SMA 1000-1038

Captive Contact

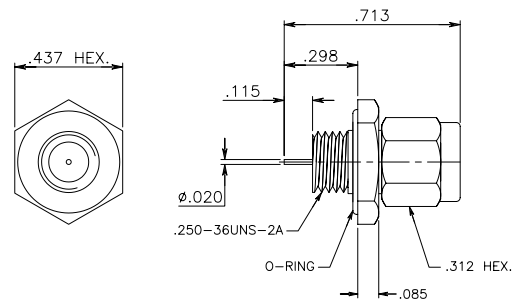
## (Straight Bulkhead Jack) Front Mounting



**PART #**  
SMA 1000-1037

Captive Contact

## (Straight Bulkhead Jack) Front Mounting



**PART #**  
SMA 1000-2010

Captive Contact

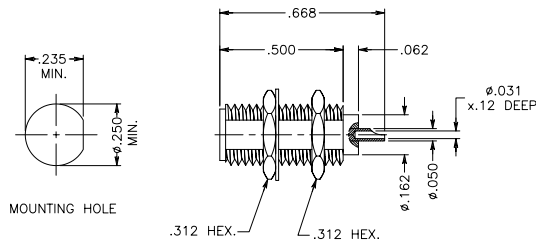
# BULKHEAD JACKS – SOLDER POT CONTACTS

- \*Add "SG" as a prefix to P/N to order Stainless Steel/Gold.
- \*Add "BG" as a prefix to P/N to order Brass/Gold.
- \*Add "NC" as a prefix to P/N to order W/Out Captivation.
- \*Add "RP" as a prefix to P/N order Reverse Polarity.



SMA

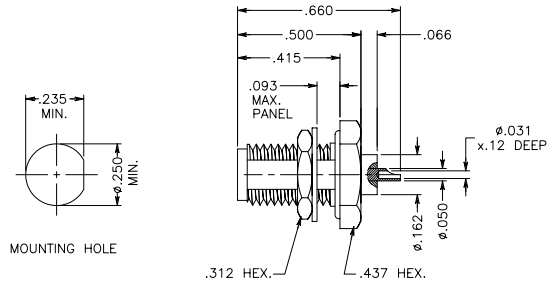
## (Straight Bulkhead Jack)



**PART #**  
SMA 1000-1039

Captive Contact

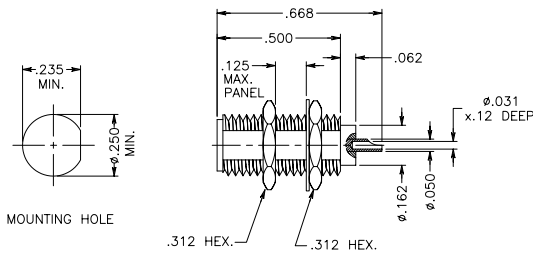
## (Straight Bulkhead Jack) with C-Ring



**PART #**  
SMA 1000-1041

Captive Contact

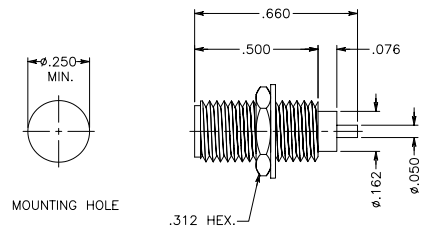
## (Straight Bulkhead Jack) Front Mounting



**PART #**  
SMA 1000-1040

Captive Contact

## (Straight Bulkhead Jack) Feedthrough Jack



**PART #**  
SMA 1000-1042

Captive Contact

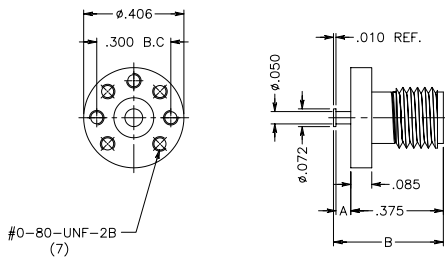
# SURFACE LAUNCH JACK & PLUGS

- \*Add "SG" as a prefix to P/N to order Stainless Steel/Gold.
- \*Add "BG" as a prefix to P/N to order Brass/Gold.
- \*Add "NC" as a prefix to P/N to order W/Out Captivation.
- \*Add "RP" as a prefix to P/N order Reverse Polarity.



SMA

## (Surface Launch) Stripline Jack

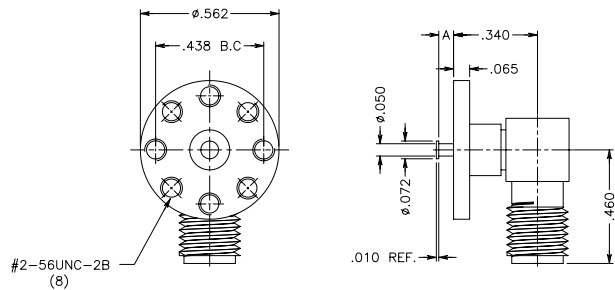


#0-80-UNF-2B  
(7)

PART #	Dim. A	Dim. B
SMA 1000-1043	.031	.417
SMA 1000-1043-1	.062	.448
SMA 1000-1043-2	.093	.479

Captive Contact

## (Surface Launch) Right Angle Stripline Jack

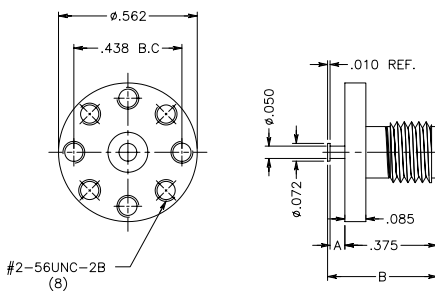


#2-56UNC-2B  
(8)

PART #	Dim. A
SMA 1000-1045	.031
SMA 1000-1045-1	.062
SMA 1000-1045-2	.093

Captive Contact

## (Surface Launch) Stripline Jack

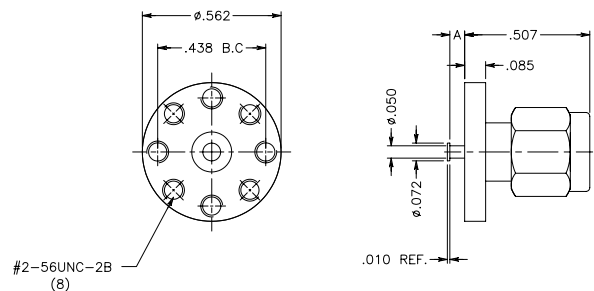


#2-56UNC-2B  
(8)

PART #	Dim. A	Dim. B
SMA 1000-1044	.031	.417
SMA 1000-1044-1	.062	.448
SMA 1000-1044-2	.093	.479

Captive Contact

## (Surface Launch) Stripline Plug



#2-56UNC-2B  
(8)

PART #	Dim. A
SMA 1000-2011	.031
SMA 1000-2011-1	.062
SMA 1000-2011-2	.093

Captive Contact

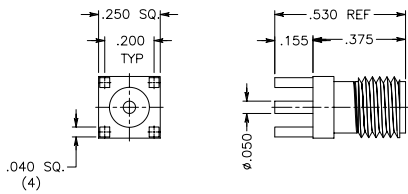
# PRINTED CIRCUIT BOARD JACK & PLUGS

- \*Add "SG" as a prefix to P/N to order Stainless Steel/Gold.
- \*Add "BG" as a prefix to P/N to order Brass/Gold.
- \*Add "NC" as a prefix to P/N to order W/Out Captivation.
- \*Add "RP" as a prefix to P/N order Reverse Polarity.



SMA

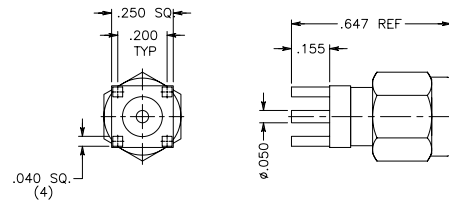
**(Printed Circuit Terminal)  
P.C. Board Jack**



**PART #**  
SMA 1000-1046

Captive Contact

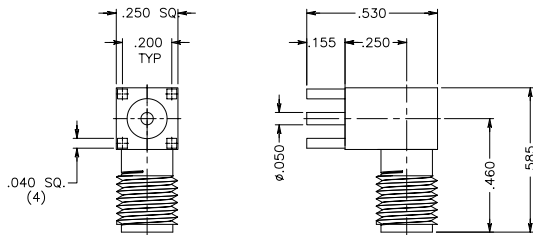
**(Printed Circuit Terminal)  
P.C. Board Plug**



**PART #**  
SMA 1000-2012

Captive Contact

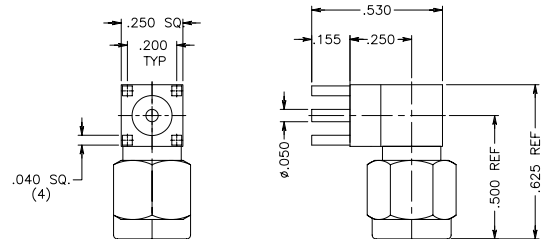
**(Printed Circuit Terminal)  
P.C. Board  
Right Angle Jack**



**PART #**  
SMA 1000-1047

Captive Contact

**(Printed Circuit Terminal)  
P.C. Board  
Right Angle Plug**



**PART #**  
SMA 1000-2013

Captive Contact

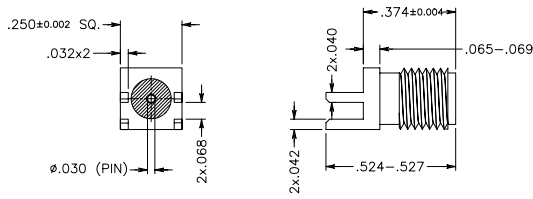
# PRINTED CIRCUIT BOARD JACKS

- \*Add "SG" as a prefix to P/N to order Stainless Steel/Gold.
- \*Add "BG" as a prefix to P/N to order Brass/Gold.
- \*Add "NC" as a prefix to P/N to order W/Out Captivation.
- \*Add "RP" as a prefix to P/N order Reverse Polarity.



SMA

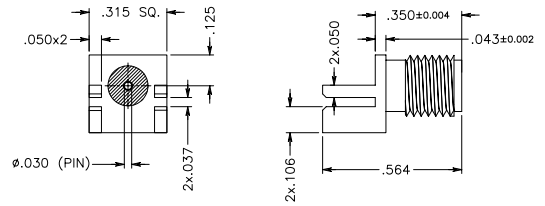
## (End Launch Round Contact)



**PART #**  
SMA 1000-1048

Captive Contact

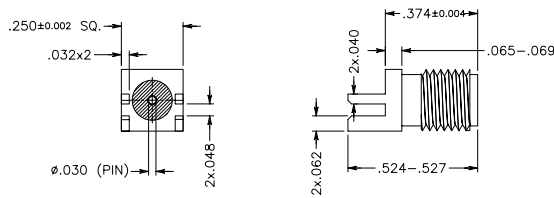
## (End Launch Round Contact)



**PART #**  
SMA 1000-1050

Captive Contact

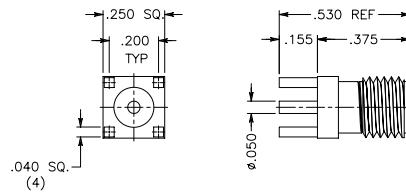
## (End Launch Round Contact)



**PART #**  
SMA 1000-1049

Captive Contact

## (SMA PCB End Launch) Reverse Polarity



**PART #**  
SMA 1000-1051

Captive Contact

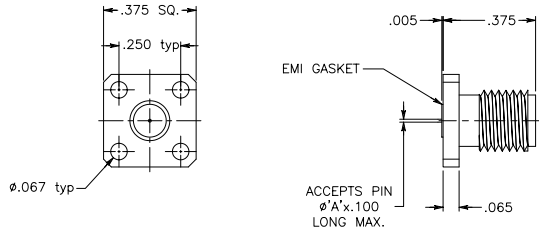
# PANEL JACK RECEPTACLE – FIELD REPLACEABLE



- \*Add "SG" as a prefix to P/N to order Stainless Steel/Gold.
- \*Add "BG" as a prefix to P/N to order Brass/Gold.
- \*Add "NC" as a prefix to P/N to order W/Out Captivation.
- \*Add "RP" as a prefix to P/N order Reverse Polarity.

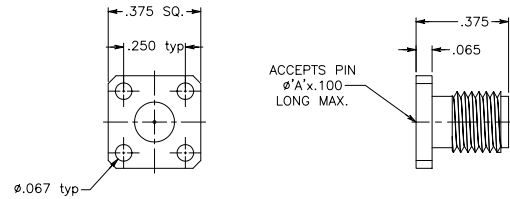
SMA

## (Four Hole Flange) Mount Straight Jack with EMI Gasket



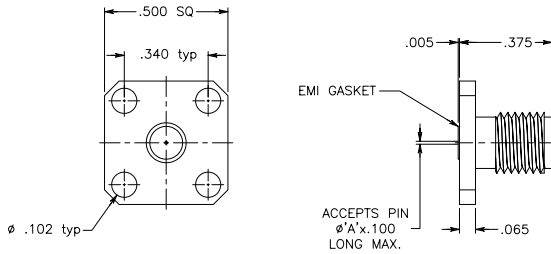
PART #	Dim. A
SMA 1000-1052	.012
SMA 1000-1052-1	.015
SMA 1000-1052-2	.018
SMA 1000-1052-3	.020
SMA 1000-1052-4	.036

## (Four Hole Flange) Mount Straight Jack



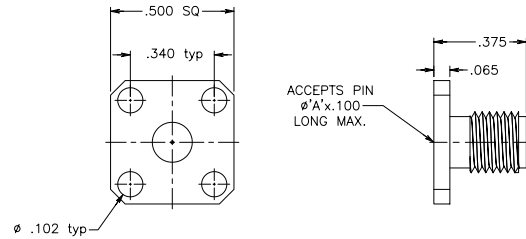
PART #	Dim. A
SMA 1000-1055	.012
SMA 1000-1055-1	.015
SMA 1000-1055-2	.018
SMA 1000-1055-3	.020
SMA 1000-1055-4	.036

## (Four Hole Flange) Mount Straight Jack with EMI Gasket



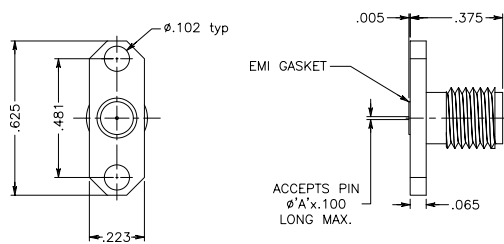
PART #	Dim. A
SMA 1000-1053	.012
SMA 1000-1053-1	.015
SMA 1000-1053-2	.018
SMA 1000-1053-3	.020
SMA 1000-1053-4	.036

## (Four Hole Flange) Mount Straight Jack



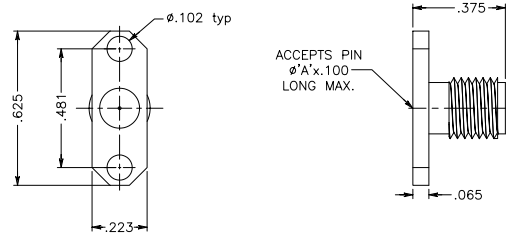
PART #	Dim. A
SMA 1000-1056	.012
SMA 1000-1056-1	.015
SMA 1000-1056-2	.018
SMA 1000-1056-3	.020
SMA 1000-1056-4	.036

## (Two Hole Flange) Mount Straight Jack with EMI Gasket



PART #	Dim. A
SMA 1000-1054	.012
SMA 1000-1054-1	.015
SMA 1000-1054-2	.018
SMA 1000-1054-3	.020
SMA 1000-1054-4	.036

## (Two Hole Flange) Mount Straight Jack



PART #	Dim. A
SMA 1000-1057	.012
SMA 1000-1057-1	.015
SMA 1000-1057-2	.018
SMA 1000-1057-3	.020
SMA 1000-1057-4	.036



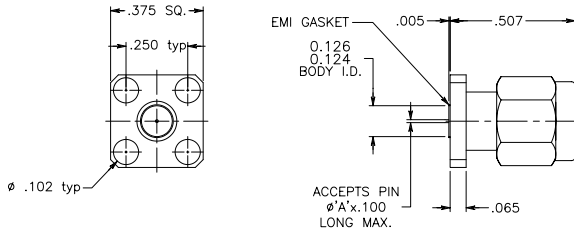
# PANEL PLUG RECEPTACLE – FIELD REPLACEABLE



- \*Add "SG" as a prefix to P/N to order Stainless Steel/Gold.
- \*Add "BG" as a prefix to P/N to order Brass/Gold.
- \*Add "NC" as a prefix to P/N to order W/Out Captivation.
- \*Add "RP" as a prefix to P/N order Reverse Polarity.

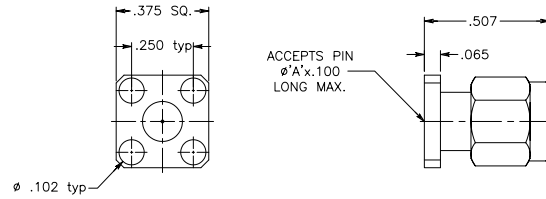
SMA

## (Four Hole Flange) Mount Straight Plug with EMI Gasket



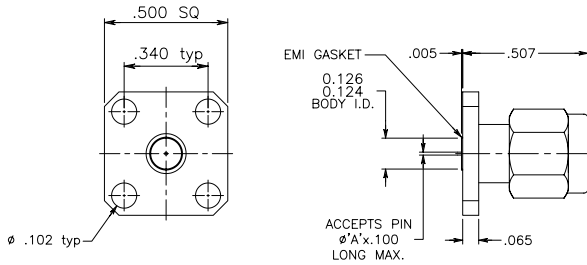
PART #	Dim. A
SMA 1000-2014	.012
SMA 1000-2014-1	.015
SMA 1000-2014-2	.018
SMA 1000-2014-3	.020
SMA 1000-2014-4	.036

## (Four Hole Flange) Mount Straight Plug



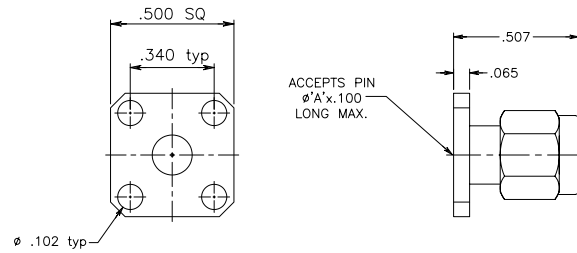
PART #	Dim. A
SMA 1000-2017	.012
SMA 1000-2017-1	.015
SMA 1000-2017-2	.018
SMA 1000-2017-3	.020
SMA 1000-2017-4	.036

## (Four Hole Flange) Mount Straight Plug with EMI Gasket



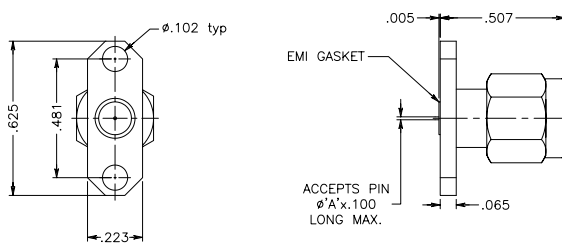
PART #	Dim. A
SMA 1000-2015	.012
SMA 1000-2015-1	.015
SMA 1000-2015-2	.018
SMA 1000-2015-3	.020
SMA 1000-2015-4	.036

## (Four Hole Flange) Mount Straight Plug



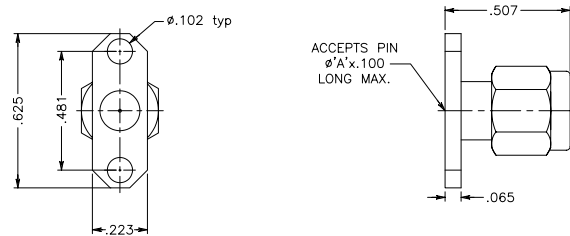
PART #	Dim. A
SMA 1000-2018	.012
SMA 1000-2018-1	.015
SMA 1000-2018-2	.018
SMA 1000-2018-3	.020
SMA 1000-2018-4	.036

## (Two Hole Flange) Mount Straight Plug with EMI Gasket



PART #	Dim. A
SMA 1000-2016	.012
SMA 1000-2016-1	.015
SMA 1000-2016-2	.018
SMA 1000-2016-3	.020
SMA 1000-2016-4	.036

## (Two Hole Flange) Mount Straight Plug



PART #	Dim. A
SMA 1000-2019	.012
SMA 1000-2019-1	.015
SMA 1000-2019-2	.018
SMA 1000-2019-3	.020
SMA 1000-2019-4	.036

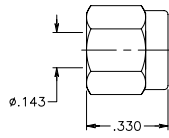
# SMA PLUG – SEMI-RIGID CABLE CONNECTORS

- \*Add "SG" as a prefix to P/N to order Stainless Steel/Gold.
- \*Add "BG" as a prefix to P/N to order Brass/Gold.
- \*Add "NC" as a prefix to P/N to order W/Out Captivation.
- \*Add "RP" as a prefix to P/N order Reverse Polarity.



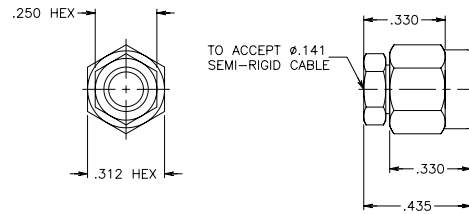
SMA

**(Semi-Rigid Cable Connector)  
Straight Cable Male  
(Without Contact)**



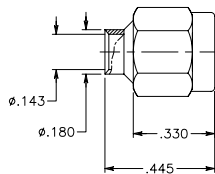
PART #	Cable Type
SMA 1000-2023	.141

**(Semi-Rigid Cable Connector)  
Male Anti-Torque Nut 0.141  
Semi-Rigid Cable (No Contact)**



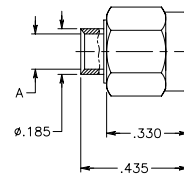
PART #	Cable Type
SMA 1000-2025	.141

**(Semi-Rigid Cable Connector)  
Straight Cable Male  
(Without Contact)**



PART #	Cable Type
SMA 1000-2024	.141

**(Semi-Rigid Cable Connector)  
Straight Cable Male  
(With Contact)**



PART #	Dim. A	Cable Type
SMA 1000-2026	.143	.141
SMA 1000-2026-1	.088	.085

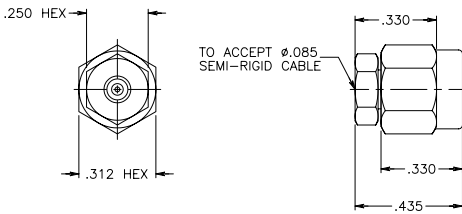
# SMA PLUGS & JACKS – SEMI-RIGID CABLE CONNECTORS

- \*Add "SG" as a prefix to P/N to order Stainless Steel/Gold.
- \*Add "BG" as a prefix to P/N to order Brass/Gold.
- \*Add "NC" as a prefix to P/N to order W/Out Captivation.
- \*Add "RP" as a prefix to P/N order Reverse Polarity.



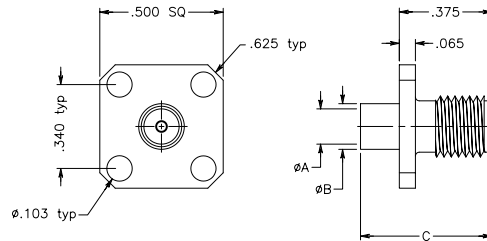
SMA

## (Semi-Rigid Cable Connector) Male Anti-Torque Straight to 0.085 Semi-Rigid Cable



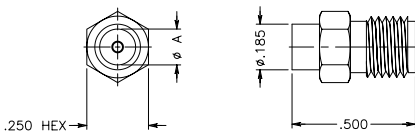
PART #
SMA 1000-2027

## (Semi-Rigid Cable Connector) Flange Mount Cable Female



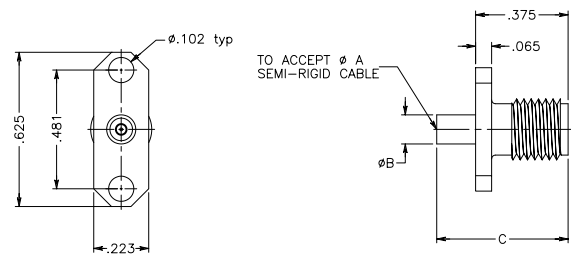
PART #	Dim. A	Dim. B	Dim. C	Cable Type
SMA 1000-1059	.143	.185	.560	.141
SMA 1000-1059-1	.088	.125	.500	.085

## (Semi-Rigid Cable Connector) Straight Cable Female



PART #	Dim. A	Cable Type
SMA 1000-1058	.143	.141
SMA 1000-1058-1	.088	.085

## (Semi-Rigid Cable Connector) Two Hole Flange Mount Cable Female



PART #	Dim. A	Dim. B	Dim. C	Cable Type
SMA 1000-1060	.143	.185	.560	.141
SMA 1000-1060-1	.088	.125	.500	.085

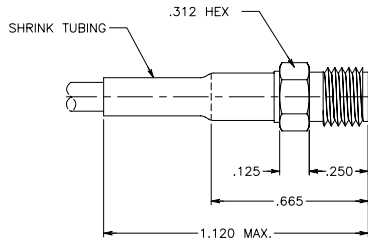
# SMA PLUGS & JACKS – FLEX CABLE CONNECTORS

- \*Add "SG" as a prefix to P/N to order Stainless Steel/Gold.
- \*Add "BG" as a prefix to P/N to order Brass/Gold.
- \*Add "NC" as a prefix to P/N to order W/Out Captivation.
- \*Add "RP" as a prefix to P/N order Reverse Polarity.



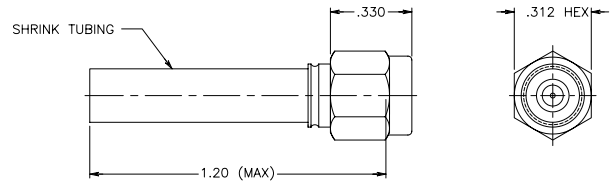
SMA

## (Flexible Cable Connector) Straight Cable Female (Crimp or Solder Attachment)



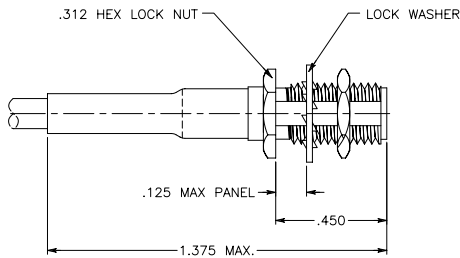
PART #	Cable Type
SMA 1000-1061	RG 55, 142, 223, 400, 58, 141, 303
SMA 1000-1061-1	RG 174, 188, 316, 179, 187

## (Flexible Cable Connector) Straight Cable Male (Crimp or Solder Attachment)



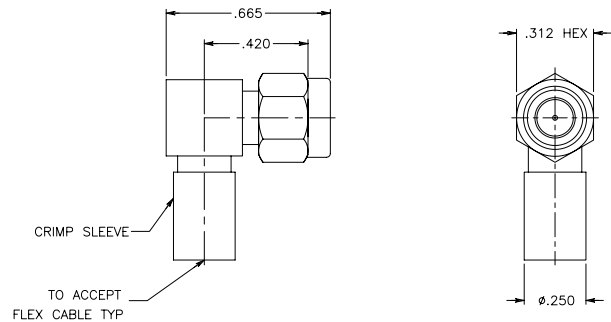
PART #	Cable Type
SMA 1000-2028	RG 55, 58, 141, 142, 223, 303, 400
SMA 1000-2028-1	RG 174, 188, 316, 179, 187

## (Flexible Cable Connector) Bulkhead Feedthrough Cable Female (Crimp or Solder Attachment)



PART #	Cable Type
SMA 1000-1062	RG 55, 58, 141, 142, 223, 303, 400
SMA 1000-1062-1	RG 174, 188, 316, 179, 187

## (Flexible Cable Connector) Right Angle Cable Male (Crimp or Solder Attachment)



PART #	Cable Type
SMA 1000-2029	RG 55, 58, 141, 142, 223, 303, 400
SMA 1000-2029-1	RG 174, 188, 316, 179, 187