

MECHANICAL

CONTACT: BREAK BEFORE MAKE
ACTUATOR: LATCHING
SWITCHING SPEED: 20 mSEC MAX

ELECTRICAL

ACTUATOR VOLTAGE: 28.0 Vdc (22.0–32.0 Vdc)
ACTUATOR CURRENT: 0.100 A MAX @ 28.0 Vdc
POWER HANDLING: 200W CW @ 1.0 GHz

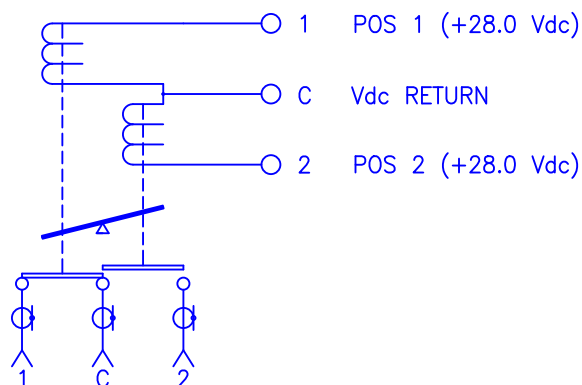
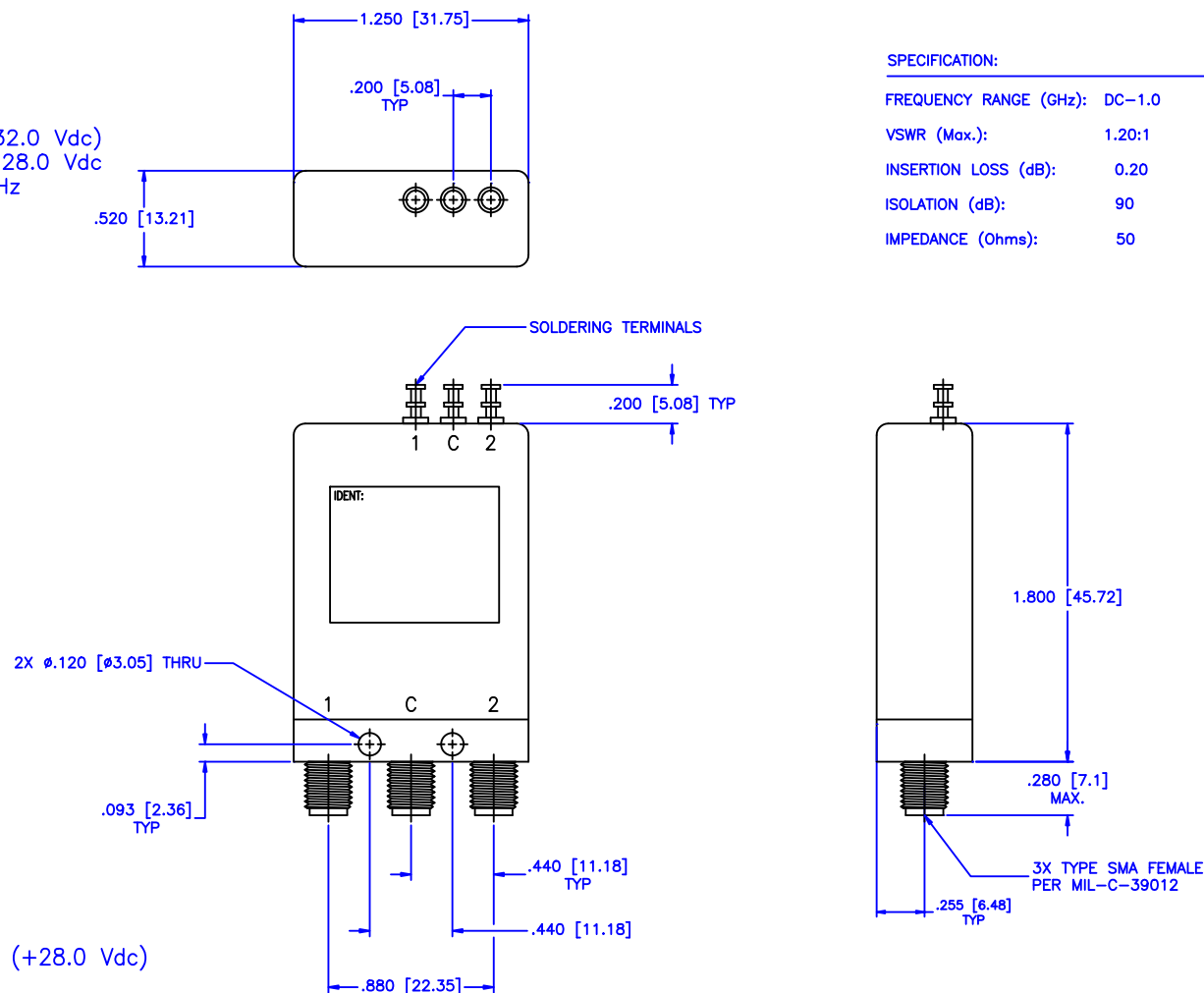
ENVIRONMENTAL

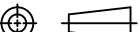
OPERATING TEMP: -54° C TO +90° C
SINE VIBRATION: 30 G'S rms
LIFE: 1,000,000 CYCLES
RANDOM VIBRATION: 20 G'S rms

REVISIONS				
ZONE	REV	DESCRIPTION	Date	APPROVED

SPECIFICATION:

FREQUENCY RANGE (GHz): DC–1.0
VSWR (Max.): 1.20:1
INSERTION LOSS (dB): 0.20
ISOLATION (dB): 90
IMPEDANCE (Ohms): 50



MATERIAL:		<div>MCLI</div> <div>MICROWAVE COMMUNICATIONS LABORATORIES INC. 7255 30TH AVE. N. SAINT PETERSBURG, FL 33710 TEL: (727) 344-6254 FAX: (727) 381-6116 http://WWW.MCLI.COM</div>		SCALE: N/A	
				SHEET: N/A	
		UNLESS OTHERWISE SPECIFIED: TOLERANCES IN (INCHES) OR (mm) (MILLIMETERS) FRACTIONS: ± 1/64 DECIMALS: ±.01 ±.005 ANGLE: ±1/2°		DRAWING TITLE: ELECTROMECHANICAL SWITCHES	
				PART NO. K2-1-L	
DRAWN: Paiboon Luekhamhan		DATE: 04-02-2001		CAGE CODE: OD2L5	
APPROVED: T. Nguyen		DATE: 04-02-2001		SIZE: A	
		THIRD ANGLE PROJECTION 		REV: N/A	
				DWG NO. 81649	
				DO NOT SCALE THE DRAWING	