

SPEC SHEET

MW500-1732F

3700 MHz to 4505 MHz

VOLTAGE CONTROLLED OSCILLATORS



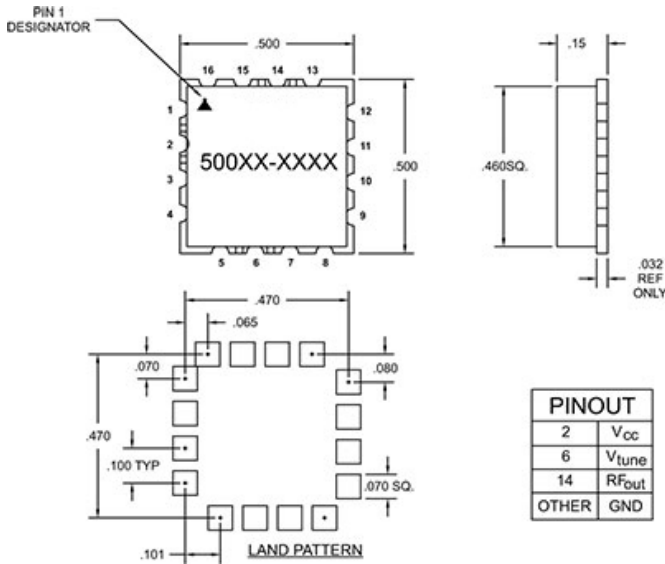
Specifications

Frequency	3700 MHz to 4505 MHz
Tuning Voltage	0.5/11 V
Power Output	7 +/- 2 dBm
Phase Noise	10 kHz Offset -81 (typ) dBc/Hz 100 kHz Offset -108 (typ) dBc/Hz
Frequency Pushing	3 MHz/V
Frequency Pulling	30 MHz
Harmonic Suppression	30 (MAX)

Operating Specifications

Supply Voltage	10 Vcc
Supply Current	35 mA
Load Impedance	50
Operating Temperature	-45 to 85 °C

Notes

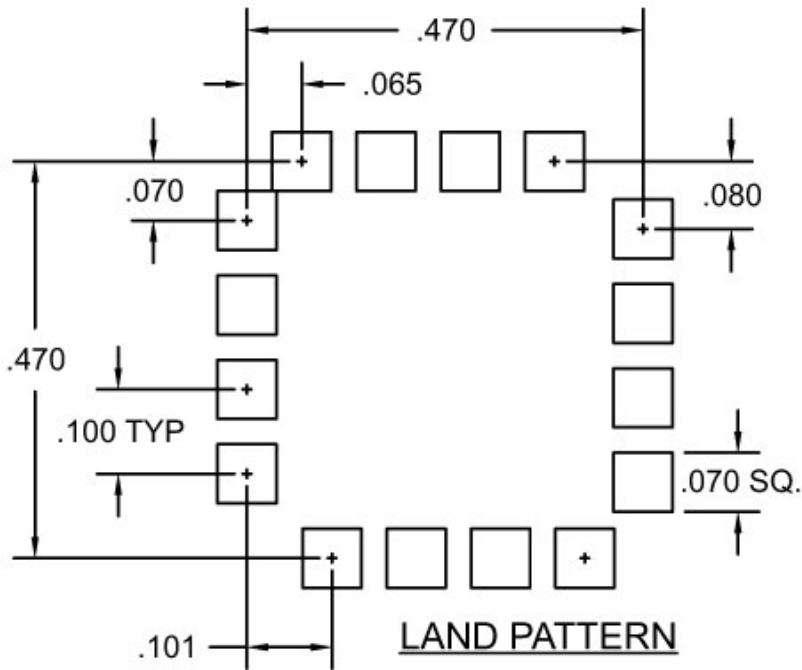
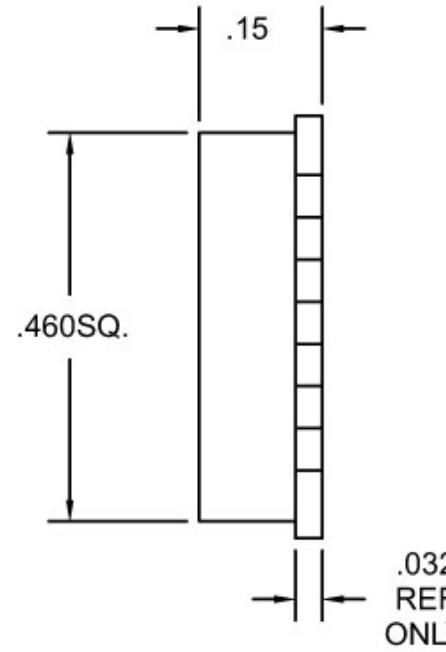
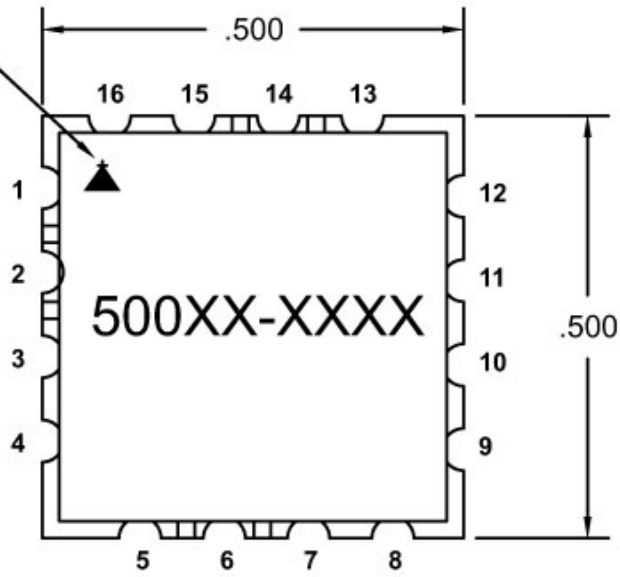


PINOUT	
2	V _{cc}
6	V _{tune}
14	RF _{out}
OTHER	GND



MERCURY COMMERCIAL ELECTRONICS

PIN 1
DESIGNATOR



PINOUT	
2	V _{cc}
6	V _{tune}
14	R _{Fout}
OTHER	GND