



0 to 40 dB Rotary Continuously Variable Attenuator, SMA Female  
To SMA Female Rated To 5 Watts From 12.4 GHz To 18 GHz

TECHNICAL DATA SHEET

PE7065-14

**Configuration**

Design	Continuously Variable, Bidirectional Attenuator
Connector 1	SMA Female
Connector 2	SMA Female
Body Material and Plating	Aluminum

**Electrical Specifications** Values at 25°C, sea level

Description	Minimum	Typical	Maximum	Units
Frequency Range	12.4		18	GHz
Impedance		50		Ohms
Attenuation Value		40		dB
Step Type		Rotary		
Input Power			5	Watts
Peak Power			3	KWatts
VSWR			1.5:1	

**Specifications by Frequency**

Description	F1	F2	F3	F4	F5	Units
Insertion Loss	0.75					dB

**Mechanical Specifications**

<b>Temperature</b>	
Operating Range	-65 to +125 deg C
<b>Size</b>	
Length	4.5 in [114.3 mm]
Width	4 in [101.6 mm]
Height	4 in [101.6 mm]

**Connectors**

Description	Connector 1	Connector 2
Type	SMA Female	SMA Female

**Compliance Certifications** (visit [www.Pasternack.com](http://www.Pasternack.com) for current document)

Not RoHS Compliant	
REACH Compliant	06/18/2012

Click the following link (or enter part number in "SEARCH" on website) to obtain additional part information including price, inventory and certifications: [0 to 40 dB Rotary Continuously Variable Attenuator, SMA Female To SMA Female Rated To 5 Watts From 12.4 GHz To 18 GHz PE7065-14](#)



# 0 to 40 dB Rotary Continuously Variable Attenuator, SMA Female To SMA Female Rated To 5 Watts From 12.4 GHz To 18 GHz

## TECHNICAL DATA SHEET

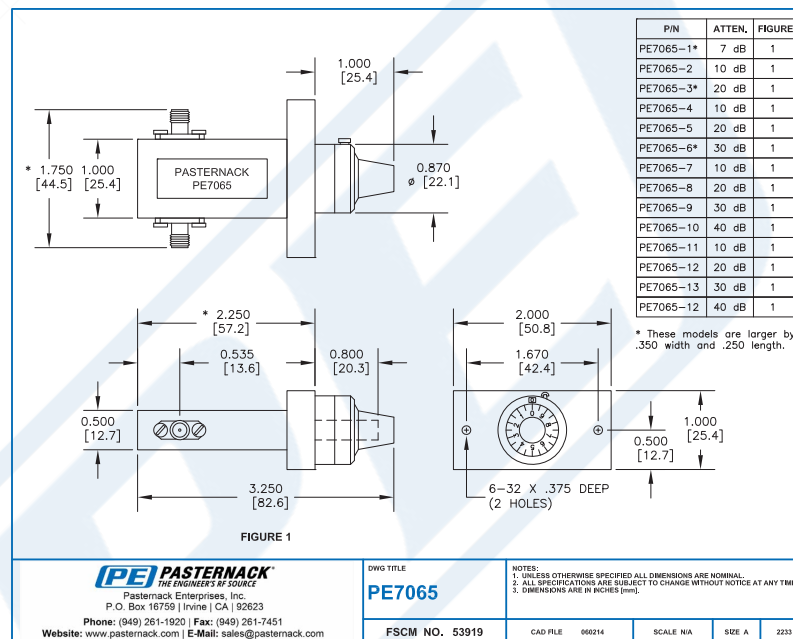
PE7065-14

### Plotted and Other Data

Notes:

- Values at 25 °C, sea level

### Outline Drawing



0 to 40 dB Rotary Continuously Variable Attenuator, SMA Female To SMA Female Rated To 5 Watts From 12.4 GHz To 18 GHz from Pasternack Enterprises has same day shipment for domestic and International orders. Our RF, microwave and millimeter wave products maintain a 99% availability and are part of the broadest selection in the industry.

Click the following link (or enter part number in "SEARCH" on website) to obtain additional part information including price, inventory and certifications: [0 to 40 dB Rotary Continuously Variable Attenuator, SMA Female To SMA Female Rated To 5 Watts From 12.4 GHz To 18 GHz PE7065-14](http://www.pasternack.com/40db-continuously-variable-sma-female-sma-female-5-watts-attenuator-pe7065-14-p.aspx)

URL: <http://www.pasternack.com/40db-continuously-variable-sma-female-sma-female-5-watts-attenuator-pe7065-14-p.aspx>

The information contained in this document is accurate to the best of our knowledge and representative of the part described herein. It may be necessary to make modifications to the part and/or the documentation of the part, in order to implement improvements. Pasternack reserves the right to make such changes as required. Unless otherwise stated, all specifications are nominal. Pasternack does not make any representation or warranty regarding the suitability of the part described herein for any particular purpose, and Pasternack does not assume any liability arising out of the use of any part or documentation.