

## MECHANICAL CHARACTERISTICS

INTERFACE	MIL-STD-348, FIGURE 310-1
IN ACCORDANCE WITH THE INTENT OF SLANT SHEET	MIL-PRF-39012/56 REF.
RECOMMENDED MATING TORQUE	9 IN-LBS. NOM.
COUPLING PROOF TORQUE	15 IN-LBS. MIN.
COUPLING NUT RETENTION	60 LBS. MIN.
FORCE TO ENGAGE	2 IN-LBS. MAX.
FORCE TO DISENGAGE	2 IN-LBS. MIN.
DURABILITY	500 CYCLES MIN.
AXIAL CONTACT RETENTION (FROM INTERFACE)	6 LBS. MIN.
AXIAL CONTACT RETENTION (FROM CABLE)	6 LBS. MIN.
CABLE RETENTION	20 LBS. MIN.
MASS	9.93 GRAMS NOM.

## ELECTRICAL CHARACTERISTICS

IMPEDANCE	50 Ohms NOM.
MAXIMUM FREQUENCY	18 GHz
VSWR DC - 12.4 GHz	1.12:1 MAX.
12.4 - 18 GHz	1.16:1 MAX.
INSERTION LOSS	0.04 $\sqrt{f}$ (GHz) dB MAX.
DIELECTRIC WITHSTANDING VOLTAGE	1375 Vrms MIN.
INSULATION RESISTANCE	5000 MegaOhms MIN.
RF LEAKAGE DC - 18 GHz	-90 dB MIN.
CORONA	350 Vrms MIN. @ 70,000 FEET
RF HIGH POTENTIAL	900 Vrms MIN.
CONTACT RESISTANCE (INNER)	4.0 Milliohms MAX.
CONTACT RESISTANCE (OUTER)	2.0 Milliohms MAX.

## ENVIRONMENTAL CHARACTERISTICS

OPERATING TEMPERATURE	-62°C TO 165°C
VIBRATION	MIL-STD-202, METHOD 204, CONDITION D
MECHANICAL SHOCK	MIL-STD-202, METHOD 213, CONDITION I
THERMAL SHOCK	MIL-STD-202, METHOD 107, CONDITION B
CORROSION	MIL-STD-202, METHOD 101, CONDITION B, 5%
MOISTURE RESISTANCE	MIL-STD-202, METHOD 106, CONDITION (NO VIBRATION)

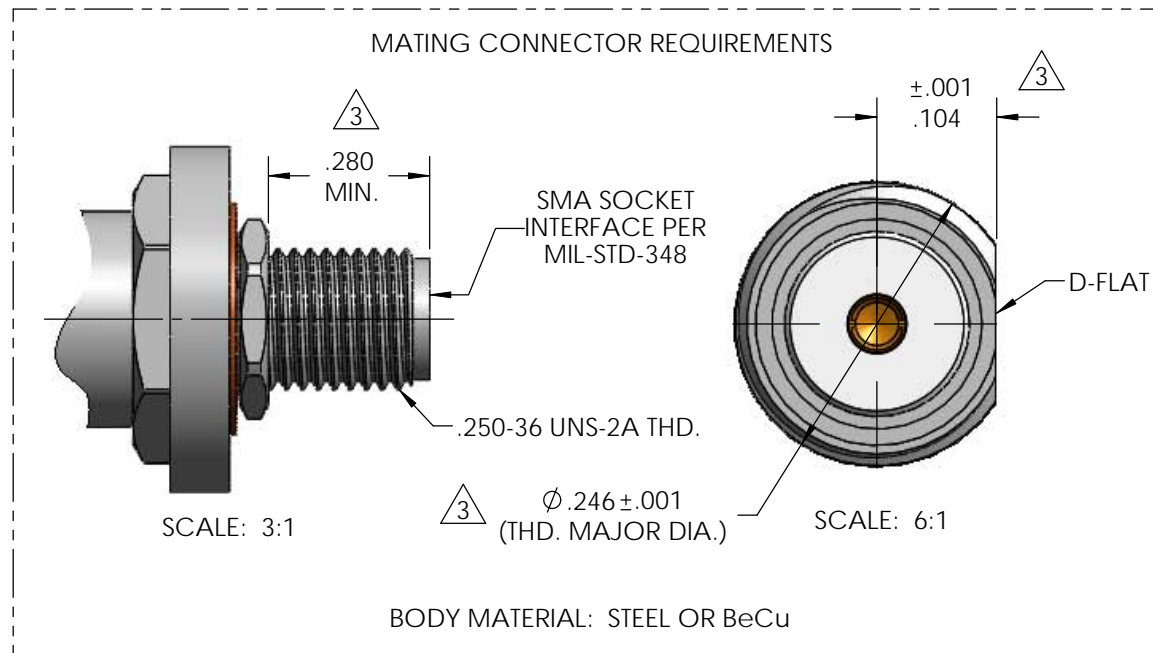
## MATERIALS AND FINISH

COUPLING NUT, LOCKING SLEEVE, MAIN BODY	STEEL, CORROSION RESISTANT, PER ASTM-A-582, UNS NO. S30300, PASSIVATE PER ASTM-A-967
FRONT AND REAR CONTACTS, REAR BODY	BERYLLIUM COPPER, ASTM-B-196 GOLD PLATED PER MIL-DTL-45204, OVER NICKEL PLATE PER AMS-QQ-N-290
SNAP RING	BERYLLIUM COPPER, PER ASTM-B-197
INSULATOR(S)	TFE FLUOROCARBON PER ASTM-D-1710
GASKET	SILICONE RUBBER PER ZZ-R-765
SPRING	316BRT STAINLESS STEEL, PASSIVATED PER ASTM-B-967
DIELECTRIC STOP	POLYETHERMIDE THERMOPLASTIC, PER ASTM-D-5205

## APPLICATION

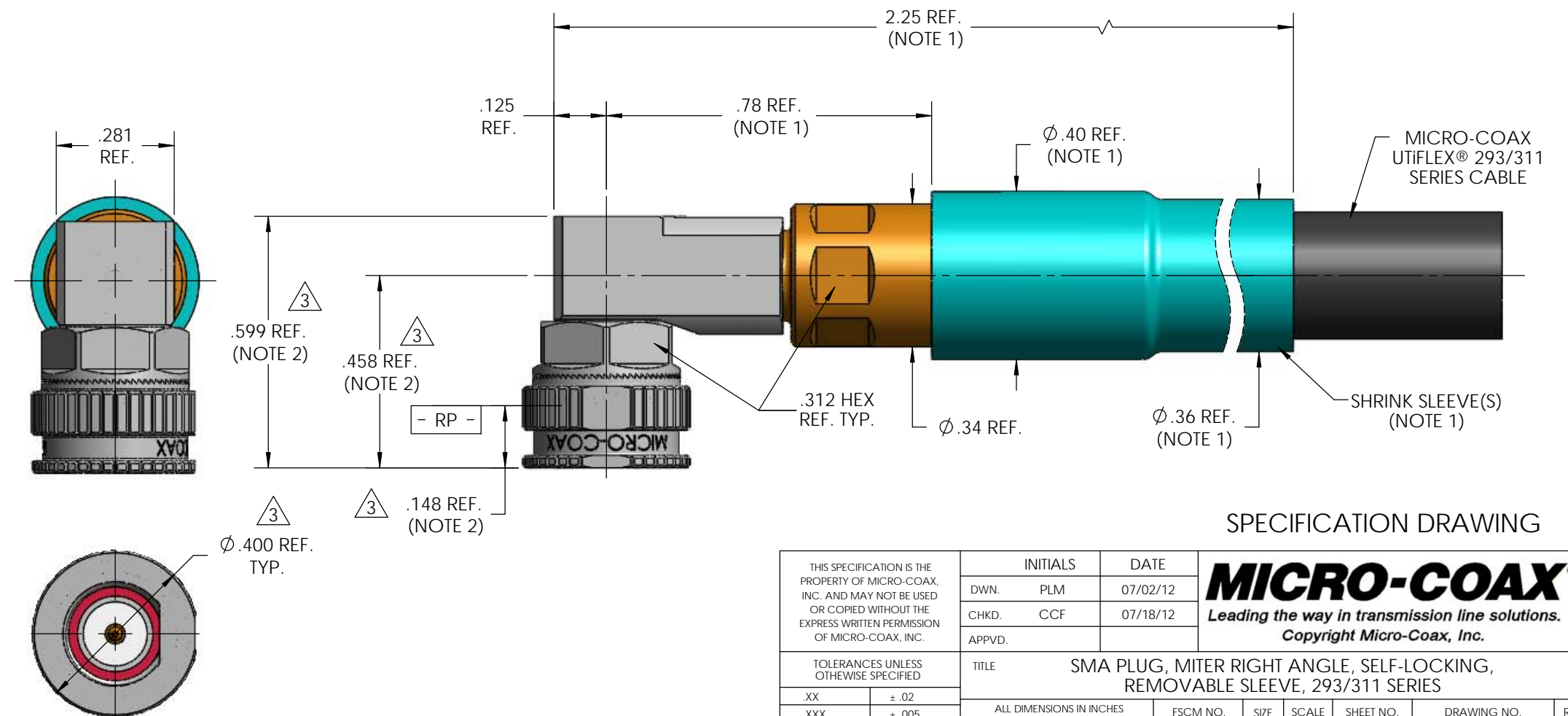
CABLE(S)	293/311 SERIES CABLE
INSTALLATION	PER CONFIGURATOR

***THIS DRAWING IS PROPRIETARY AND CONFIDENTIAL.***

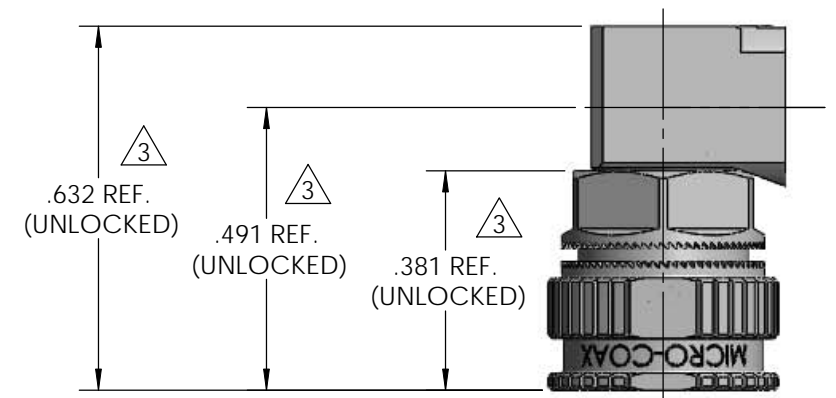


NOTE:

1. MARKER LOCATION ON THIS DRAWING IS FOR REFERENCE ONLY AND IS SUBJECT TO CHANGE WITHOUT NOTICE.
2. DIMENSION VALUE BASED ON SLEEVE IN LOCKED POSITION.



REV	DESCRIPTION	DATE	BY	APPVD	CHKD
1	PRELIMINARY RELEASE	07/20/2012	PLM	RS	CCF
2	ADDED RED STRIPE SPECIFICATION ON COUPLING NUT	9/24/2012	PLM	RS	RS
3	REVISED SMA BHJ BODY DIMENSIONAL REQUIREMENTS; REVISED LOCKING SLEEVE; REMOVED RED STRIPE	6/4/2013	PLM	RS	RS



## SPECIFICATION DRAWING

THIS SPECIFICATION IS THE PROPERTY OF MICRO-COAX, INC. AND MAY NOT BE USED OR COPIED WITHOUT THE EXPRESS WRITTEN PERMISSION OF MICRO-COAX, INC.	INITIALS		DATE		<div><b>MICRO-COAX<sup>®</sup></b> <i>Leading the way in transmission line solutions.</i> <i>Copyright Micro-Coax, Inc.</i></div>						
	DWN.	PLM	07/02/12								
	CHKD.	CCF	07/18/12								
	APPVD.										
TOLERANCES UNLESS OTHERWISE SPECIFIED			TITLE								
			SMA PLUG, MITER RIGHT ANGLE, SELF-LOCKING, REMOVABLE SLEEVE, 293/311 SERIES								
.XX	± .02	ALL DIMENSIONS IN INCHES UNLESS OTHERWISE SPECIFIED. SCREW THDS. TO BE IN ACCORD WITH ANSI B1.1-1989.			FSCM NO.	SIZE	SCALE	SHEET NO.	DRAWING NO.	REV	
.XXX	± .005										
.XXXX	± .0010										
ANGLES	± 2°										
			64639			B	3:1	1 OF 1	SD905208	3	