



SMA Female Connector Solder Attachment 2 Hole
Flange Tab Terminal, .481 inch Hole Spacing

TECHNICAL DATA SHEET

PE4370

Configuration

Connector	SMA Female
Connector Interface Type	Tab
Cable Attachment Method (Shield/Contact)	Solder
Body Style	Straight
Mount Method	2 Hole Flange

Electrical Specifications

Impedance, Ohms	50
-----------------	----

Mechanical Specifications

Size

Length, in [mm]	0.475 [12.07]
Width/Dia., in [mm]	0.223 [5.66]
Height, in [mm]	0.625 [15.88]
Weight, lbs [g]	0.005 [2.27]

Connector

Type	SMA Female
Contact Material and Plating	Beryllium Copper, Gold
Body Material and Plating	Stainless Steel, Gold
Dielectric Type	PTFE

Compliance Certifications (visit www.Pasternack.com for current document)

RoHS Compliant	Yes
REACH Compliant	06/18/2012

Plotted and Other Data

Notes:	Values at 25 °C, sea level
--------	----------------------------

SMA Female Connector Solder Attachment 2 Hole Flange Tab Terminal, .481 inch Hole Spacing from Pasternack Enterprises has same day shipment for domestic and International orders. Our RF, microwave and fiber optic products maintain a 99% availability and are part of the broadest selection in the industry.

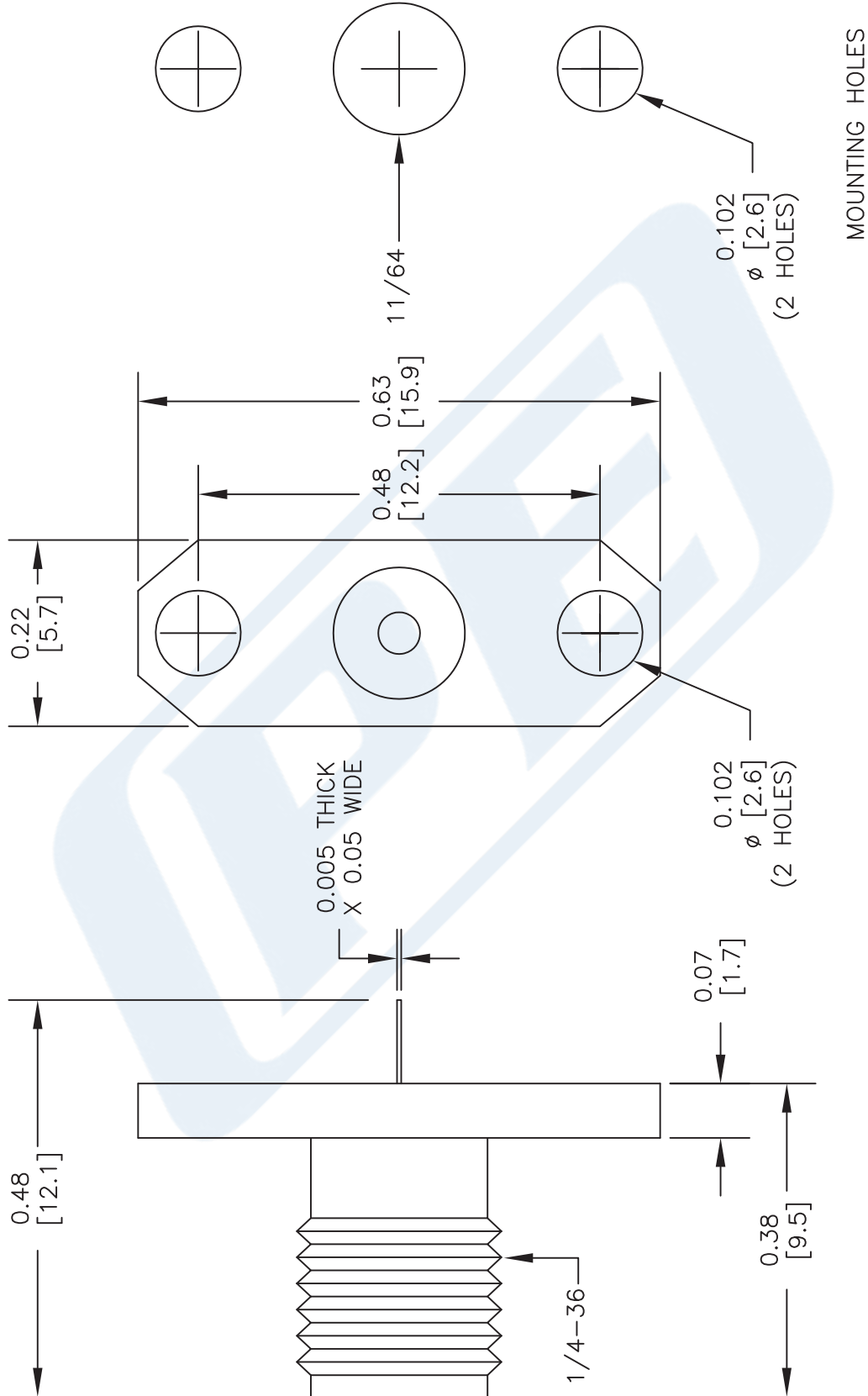
Click the following link (or enter part number in "SEARCH" on website) to obtain additional part information including price, inventory and certifications: [SMA Female Connector Solder Attachment 2 Hole Flange Tab Terminal, .481 inch Hole Spacing PE4370](http://www.pasternack.com/sma-female-standard-tab-terminal-connector-pe4370-p.aspx)

URL: <http://www.pasternack.com/sma-female-standard-tab-terminal-connector-pe4370-p.aspx>

The information contained in this document is accurate to the best of our knowledge and representative of the part described herein. It may be necessary to make modifications to the part and/or the documentation of the part, in order to implement improvements. Pasternack reserves the right to make such changes as required. Unless otherwise stated, all specifications are nominal.

PE4370 CAD Drawing

SMA Female Connector Solder Attachment 2 Hole Flange
Tab Terminal, .481 inch Hole Spacing



DWG TITLE

PE4370

NOTES:
1. UNLESS OTHERWISE SPECIFIED ALL DIMENSIONS ARE NOMINAL.
2. ALL SPECIFICATIONS ARE SUBJECT TO CHANGE WITHOUT NOTICE AT ANY TIME.
3. DIMENSIONS ARE IN INCHES [mm].

FSCM NO. 53919

CAD FILE 013114

SCALE N/A

SIZE A

150

PE PASTERNAK®
THE ENGINEER'S RF SOURCE

Pasternack Enterprises, Inc.
P.O. Box 16759 | Irvine | CA | 92623
Phone: (949) 261-1920 | Fax: (949) 261-7451
Website: www.pasternack.com | E-Mail: sales@pasternack.com