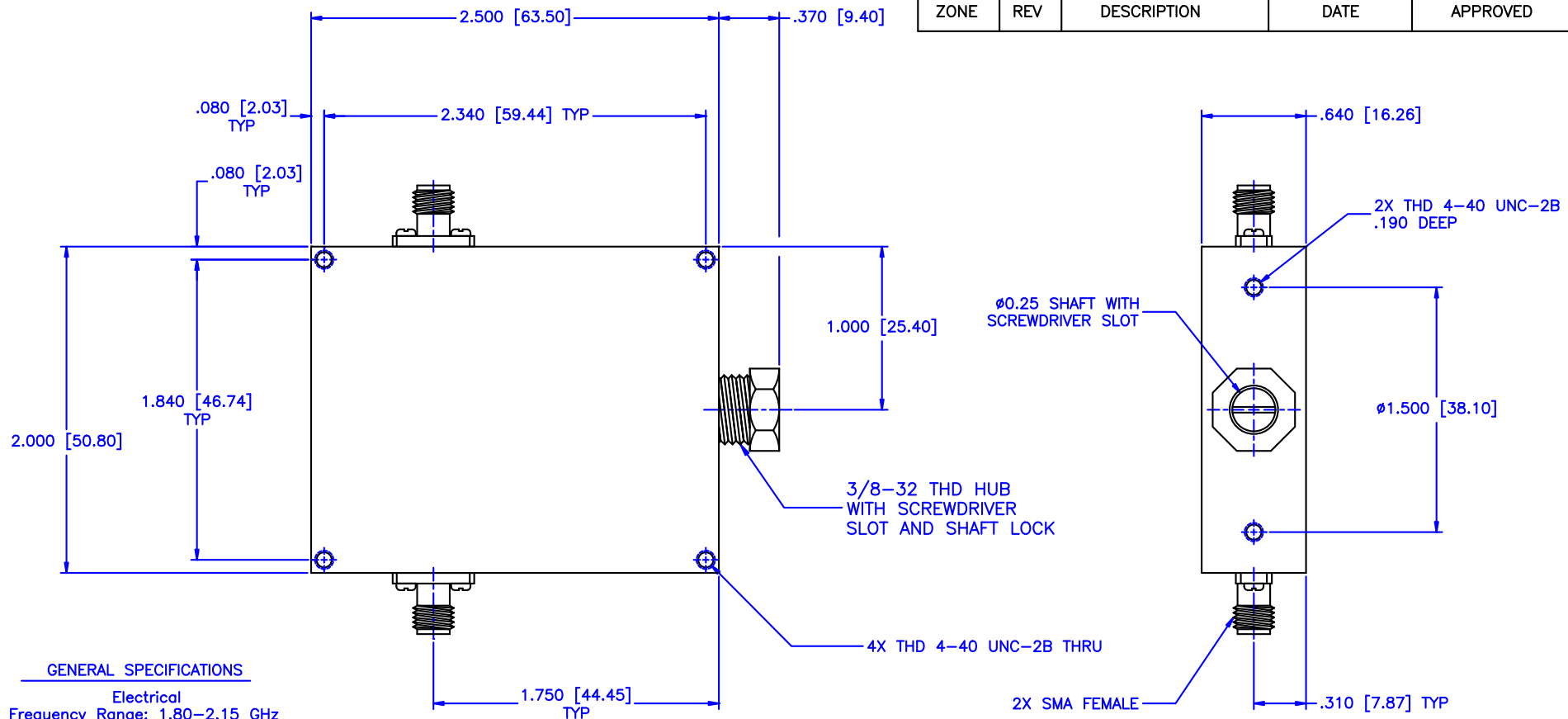


REVISIONS				
ZONE	REV	DESCRIPTION	DATE	APPROVED



GENERAL SPECIFICATIONS

Electrical
Frequency Range: 1.80–2.15 GHz
Attenuation: 15dB
Flatness: ±1.5dB
VSWR: 1.50:1 Max.
Insertion Loss per Frequency Band
to 18 GHz: 0.5dB max.
to 26 GHz: 0.75dB max.
to 40 GHz: 1.50dB max.
RF Power: 7W average, 3kW peak

Mechanical
Body: Aluminum
Connectors: Stainless Steel
Finish: Unique corrosion resistant 316 stainless steel epoxy coating IAW MIL-F-14072
Weight: 5.2oz / 150gm

Environmental
Operating Temperature: –55°C to +110 °C
Shock: 15 G's, 11ms, 1/2 sine
Vibration: 3 G's overall
Altitude: 40,000ft. Survival 25,000ft Operating

MATERIAL:		MCLI		MICROWAVE COMMUNICATIONS LABORATORIES INC. 7255 30TH AVE. N. SAINT PETERSBURG, FL 33710 TEL: (727) 344-6254 FAX: (727) 381-6116 http://WWW.MCLI.COM		SCALE: N/A	
		UNLESS OTHERWISE SPECIFIED: TOLERANCES IN (INCHES) OR [mm] (MILLIMETERS) FRACTIONS: ± 1/64 DECIMALS: ±.01 ±.005 ANGLE: ±1/2°		DRAWING TITLE: CONTINUOUSLY VARIABLE ATTENUATOR		SHEET: N/A	
DRAWN: Paiboon Luekhamhan		DATE: 02-09-2011		PART NO. CA19-15		CAGE CODE: 0D2L5	
APPROVED: T. Nguyen		DATE: 02-09-2011		THIRD ANGLE PROJECTION		SIZE: A REV: N/A DO NOT SCALE THE DRAWING	
						DWG NO. 82236	