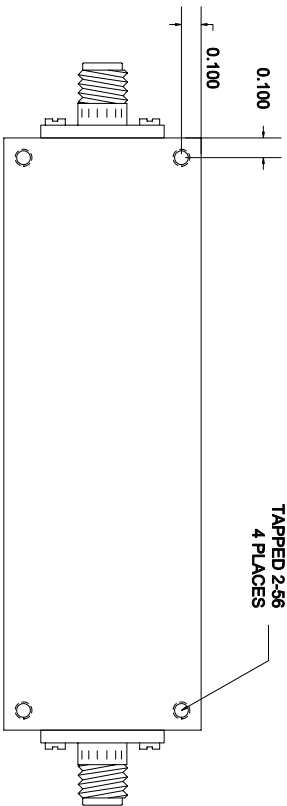
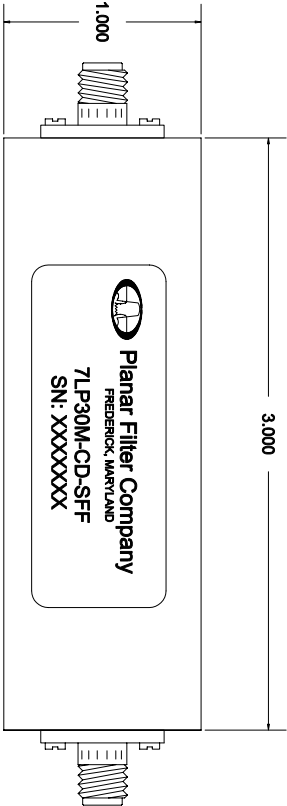
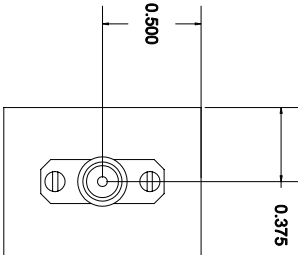


DESCRIPTION:

PFC model number 7LP30M-CD-SFF is a Lowpass filter with SMA female connectors in and out. All filters will be machined and silver plated to provide the highest possible Q.

SPECIFICATIONS:

- 1dB PASSBANDFROM DC TO 30 MHz
- VSWR IN THE PASS BAND:1.8:1 MAX.
- INSERTION LOSS (PASSBAND):0.5dB MAX.
- REJECTION55dBc, @ 60 MHz
- CONNECTORS:SMA FEMALE CONNECTORS
- SIZE3.00" (L) x 1.00 " (W) x 0.75" (H)
- WEIGHT1 OZ. TYP.



ENVIRONMENTAL RATINGS:

- TEMPERATURE:-55°C TO +85°C (OPERATING)
-65°C TO +125°C (STORAGE)
- HUMIDITY:MIL-STD-202F, METHOD 103B COND. B
- SHOCK:MIL-STD-202F, METHOD 213B COND. B
- VIBRATION:MIL-STD-202F, METHOD 204D COND. B
- ALTITUDE:MIL-STD-202F, METHOD 105C COND. B
- SALT FOG:MIL-STD-202F, METHOD 107D COND. A
- FUNGUS:MIL-STD-810C, METHOD 508.2
- TEMPERATURE CYCLE:MIL-STD-202F, METHOD 107

REVISIONS			
ZONE	REV.	DESCRIPTION	DATE
	—	ORIGINAL RELEASE	12/16/04

CONFIDENTIAL AND PROPRIETARY

NOTE: THE ABOVE SPECIFICATIONS ARE SUBJECT TO CHANGE OR REVISION

PART NO.		27000633	
APPROVALS		DATE	
DRAWN		12/16/04	
CHECKED			
ISSUED			
TITLE			
7LP30M-CD-SFF OUTLINE			
SIZE		FSCM NO.	
A		1QUWO	
SCALE		DWG NO.	
N/S		27000633	
		REV.	
		—	
		SHEET	
		1 of 1	

ALL DIMENSIONS ARE IN INCHES
TOLERANCES:
X.XX ±0.010
X.XXX ±0.005