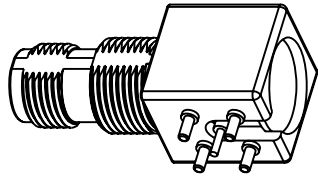
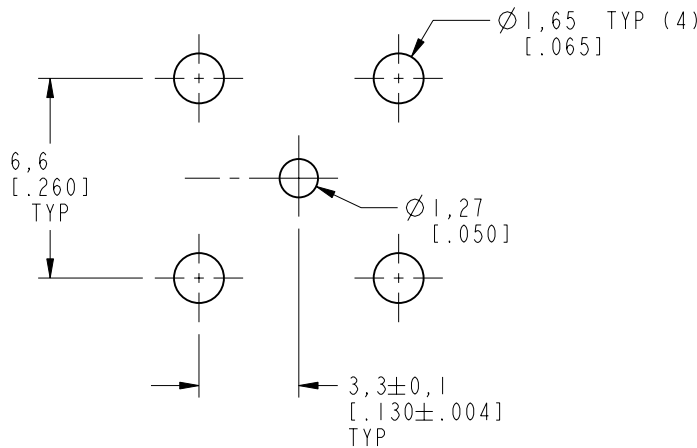
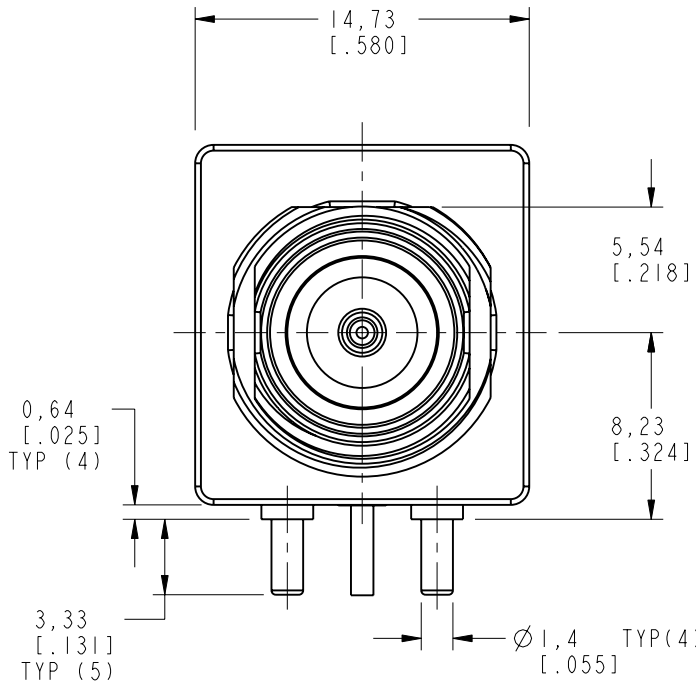
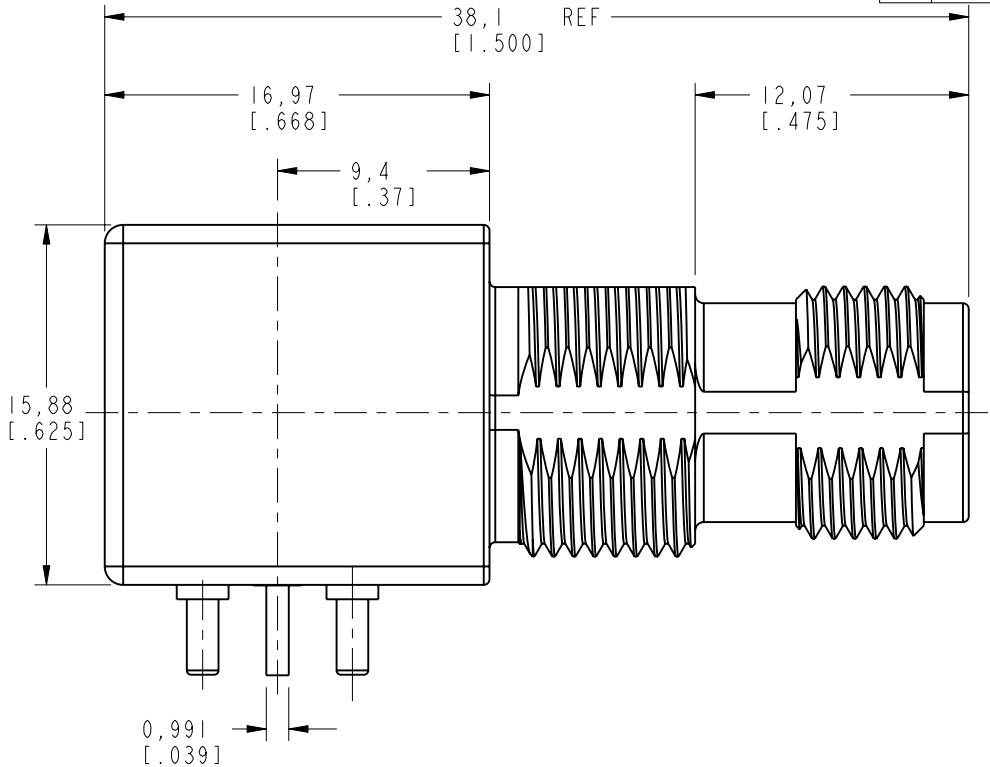


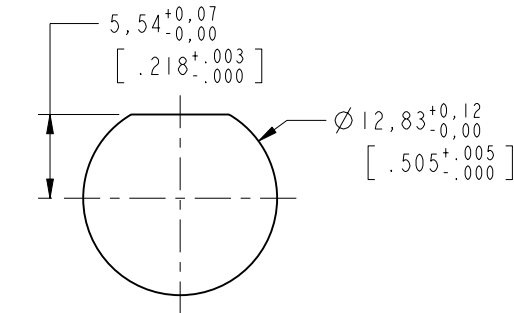
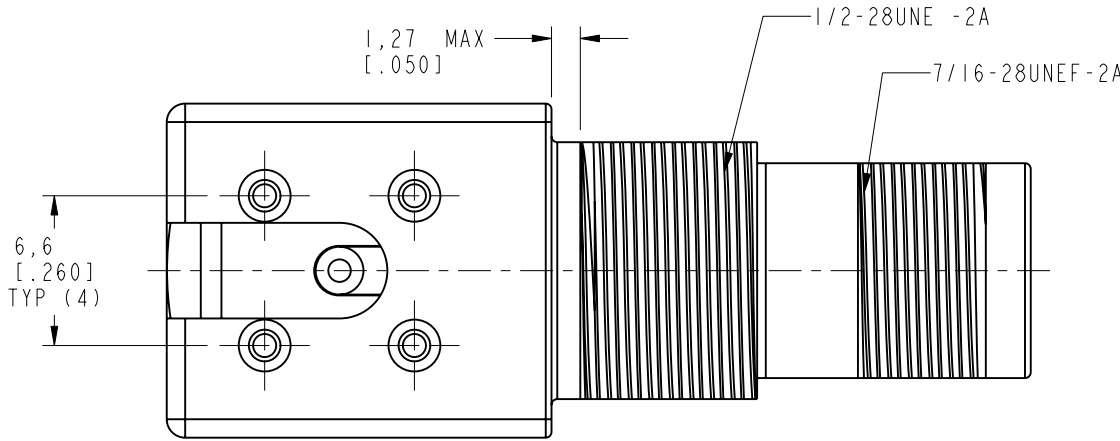
- NOTES:
- MATERIALS AND FINISHES:
BODY - ZINC ALLOY, MATTE TIN PLATING
CONTACT - BRASS, GOLD PLATING
COVER - BRASS, MATTE TIN PLATING
FRONT INSULATOR - PTFE
REAR INSULATOR - PBT
 - ELECTRICAL:
A. IMPEDANCE: 50 OHM
B. FREQUENCY RANGE: DC - 1.0 GHz
C. VSWR(RETURN LOSS): 1.4 (16 dB), MAX.
D. DIELECTRIC WITHSTANDING VOLTAGE: 1500 VRMS, MIN.
 - MECHANICAL:
A. DURABILITY: 100 CYCLES MIN.
B. TEMPERATURE RANGE: -65° C TO 165° C
 - PACKAGE PER SPEC 349-50728. KEY ELEMENTS INCLUDE:
A. THE MAXIMUM WEIGHT OF ALL OUTER CARTONS IS 40 LBS.
THIS INCLUDES INTERM PROCESS CONTAINERS.
B. ALL PARTIALS MUST BE PACKAGED SEPARATELY AND CLEARLY MARKED "PARTIAL".
C. ALL BOX FILLING MATERIAL TO FILL EMPTY SPACE IN CARTONS MUST BE ROHS 2002 COMPLIANT.
D. THE USE OF STAPLES FOR CLOSING ANY OF THE PACKAGES IS UNACCEPTABLE. TAPE MUST BE USED.
E. BULK PACKAGES OF CONNECTORS MUST INCLUDE A DESICCANT TO PROTECT AGAINST HUMIDITY.



SCALE 1.000



RECOMMENDED PCB MOUNTING DIMENSIONS



RECOMMENDED PANEL MOUNTING HOLE

CUSTOMER OUTLINE DRAWING

ALL OTHER SHEETS ARE FOR INTERNAL USE ONLY

UNLESS OTHERWISE SPECIFIED, DIMENSIONS ARE IN METRIC AND TOLERANCES ARE:
<0.5mm ± 0.05mm 0.5 - 6mm ±0.1mm 6 - 30mm ±0.2mm 30 - 120mm ± 0.3mm ANGLES ±1°

NOTICE - These drawings, specifications, or other data (1) are, and remain the property of Amphenol corp. (2) must be returned upon request; and (3) are confidential and not to be disclosed to any person other than those to whom they are given by Amphenol Corp. the furnishing of these drawings, specifications, or other data by Amphenol Corp., or to any other person to anyone for any purpose is not to be regarded by implicatioin or otherwise in any manner licensing, granting rights to permitting such holder or any other sperson to manufacture, use or sell any product, process or design, patented or otherwsie, that may in any way be related to or disclosed by said drawings, specifications, or other data.

MATERIAL

SEE NOTE

REFERENCE

EAR # 1608 AND 611X-4199-100

CONFIGURATION LEVEL: □□□□

FINISH PER KAI JACK SPEC EP-SS-9700

DRAWN

S.DUAN

ENGINEER

H. PARIKH

APPROVED

S.HSIEH

CAD FILE

/PDMLINK

DATE

02-Jul-13

DATE

21-Jun-05

DATE

02-Jul-13

TITLE

TNC (RP) R/A
PCB BULKHEAD
BODY TIN PLATED

SCALE: 3.0:1.0

SHEET 2 OF 2

DWG SIZE

B

REV

F

Amphenol RF	
Danbury CT USA, Tainan, Taiwan, Shenzhen, China	
www.amphenolrf.com	
DRAWING NO. 31-6240-3	
ITEM NO. 31-6240-3	
PART NO. 31-6240-3	