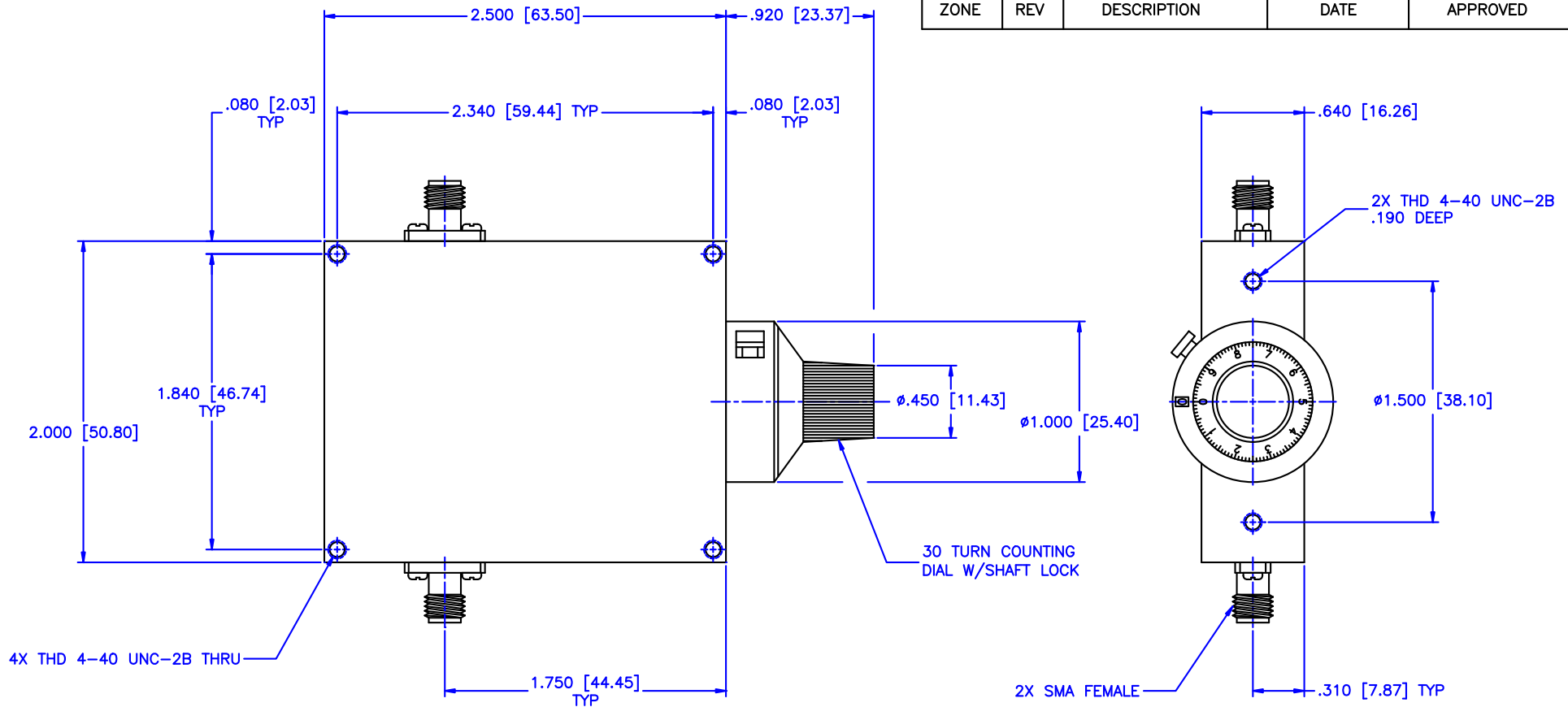


REVISIONS				
ZONE	REV	DESCRIPTION	DATE	APPROVED



Specifications:

Frequency Range: 8–12.4 GHz
Attenuation: 10dB
Insertion Loss: 0.5 Max.
VSWR: 1.50:1
RF Power: 7W Average, 3kW Peak

Environmental:

Temperature range: –55°C to +110°C
Shock: 15 G's, 11mS, 1/2 sine
Vibration: 3 G's overall
Altitude: 40,000 ft. Survival 25,000ft Operating

MATERIAL:			MICROWAVE COMMUNICATIONS LABORATORIES INC. 7255 30TH AVE. N. SAINT PETERSBURG, FL 33710 TEL: (727) 344-6254 FAX: (727) 381-6116 http://WWW.MCLI.COM		SCALE:	N/A	
					SHEET:	N/A	
UNLESS OTHERWISE SPECIFIED: TOLERANCES IN (INCHES) OR [mm] (MILLIMETERS) FRACTIONS: $\pm 1/64$ DECIMALS: ± 0.01 ± 0.005 ANGLE: $\pm 1/2^\circ$		DRAWING TITLE:				CONTINUOUSLY VARIABLE ATTENUATOR WITH DIAL	
		PART NO.				CVA10-10/D	
DRAWN:	DATE:	PROPRIETARY NOTICE: THE INFORMATION IN THIS DRAWING IS PROPRIETARY AND SHALL NOT BE USED OR DISCLOSED WITHOUT WRITTEN PERMISSION FROM MICROWAVE COMMUNICATIONS LABORATORIES INC. (MCLI)		CAGE CODE:	SIZE:	REV:	DWG NO.
APPROVED:	DATE:			0D2L5	A	N/A	85371
				DO NOT SCALE THE DRAWING			