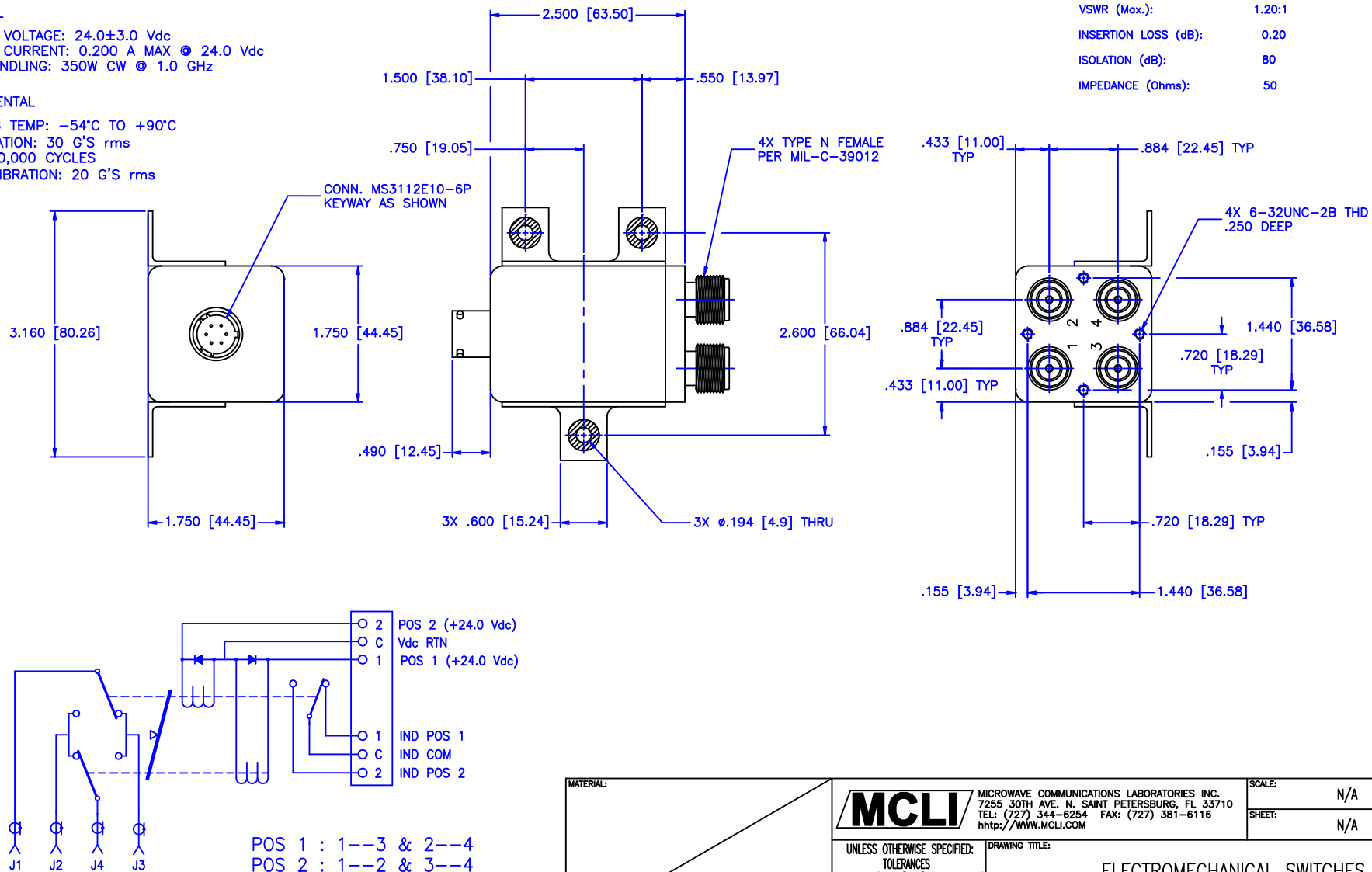



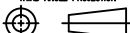
CONTACT: BREAK BEFORE MAKE
ACTUATOR: LATCHING
SWITCHING SPEED: 20 mSEC MAX

ACTUATOR VOLTAGE: 24.0±3.0 Vdc
ACTUATOR CURRENT: 0.200 A MAX @ 24.0 Vdc
POWER HANDLING: 350W CW @ 1.0 GHz

OPERATING TEMP: -54°C TO +90°C
SINE VIBRATION: 30 G'S rms
LIFE: 1,000,000 CYCLES
RANDOM VIBRATION: 20 G'S rms



FREQUENCY RANGE (GHz):	DC-2.0
VSWR (Max.):	1.20:1
INSERTION LOSS (dB):	0.20
ISOLATION (dB):	80
IMPEDANCE (Ohms):	50

MATERIAL:		 MICROWAVE COMMUNICATIONS LABORATORIES INC. 7255 30TH AVE. N. SAINT PETERSBURG, FL 33710 TEL: (727) 344-6254 FAX: (727) 381-6116 http://WWW.MCLI.COM		SCALE: N/A	
DRAWN:		UNLESS OTHERWISE SPECIFIED: TOLERANCES IN (INCHES) OR [mm] (MILLIMETERS) FRACTIONS: $\pm 1/64$ DECIMALS: ± 0.01 ± 0.005 ANGLE: $\pm 1/2^\circ$		SHEET: N/A	
DATE: 07-27-2007		DRAWING TITLE: ELECTROMECHANICAL SWITCHES		PART NO.	
Paiboon Luexhamhan		PROPRIETARY NOTICE: THE INFORMATION IN THIS DRAWING IS PROPRIETARY AND SHALL NOT BE USED OR REPRODUCED WITHOUT WRITTEN PERMISSION FROM MICROWAVE COMMUNICATIONS LABORATORIES INC. (MCLI)		C2-2-LIS/24	
APPROVED: T. Nguyen		DATE: 07-27-2007		CAGE CODE: OD2L5	
THIRD ANGLE PROJECTION 		SIZE: C		REV: N/A	
		DO NOT SCALE THE DRAWING		DWG NO. 82875	