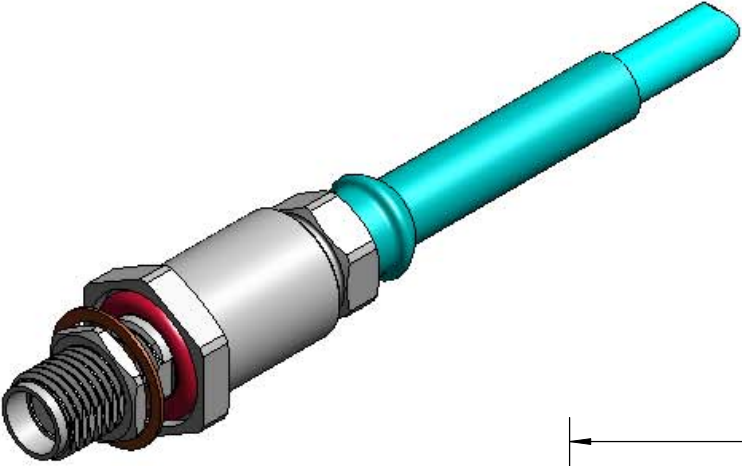
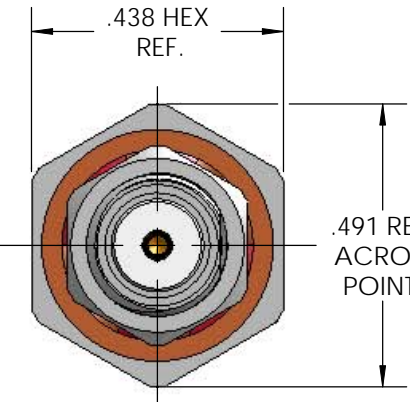


MECHANICAL CHARACTERISTICS	
INTERFACE	MIL-STD-348, FIGURE 310-2
IN ACCORDANCE WITH THE INTENT OF SLANT SHEET	MIL-PRF-39012/59 REF.
RECOMMENDED MATING TORQUE	9 IN-LBS. NOM.
FORCE TO ENGAGE	2 IN-LBS. MAX.
FORCE TO DISENGAGE	2 IN-LBS. MAX.
DURABILITY	500 CYCLES MIN.
AXIAL CONTACT RETENTION (FROM INTERFACE)	6 LBS. MIN.
AXIAL CONTACT RETENTION (FROM CABLE)	6 LBS. MIN.
CENTER CONTACT INSERTION (FROM CABLE)	2 LBS. MAX
CENTER CONTACT WITHDRAW (FROM CABLE)	1 Oz. MIN.
CABLE RETENTION	20 LBS MIN
MASS (SHEET 1)	9.92 GRAMS NOM.
MASS WITHOUT NUT, LOCKWASHER, & GASKET	9.52 GRAMS NOM.
MASS (SHEET 2)	12.61 GRAMS NOM.
JAM NUT TORQUE	12 - 15 IN-LBS.
ELECTRICAL CHARACTERISTICS	
IMPEDANCE	50 Ohms NOM.
MAXIMUM FREQUENCY	18 GHz
VSWR DC - 18 GHz	1.16:1 MAX.
INSERTION LOSS	0.03 √F (GHz) dB MAX.
DIELECTRIC WITHSTANDING VOLTAGE	925 Vrms MIN.
INSULATION RESISTANCE	5000 MegaOhms MIN.
RF LEAKAGE DC - 18 GHz	-90 dB MIN.
CORONA	250 Vrms MIN. @ 70,000 FEET
RF HIGH POTENTIAL	650 Vrms MIN. 650
CONTACT RESISTANCE (INNER)	2.0 MilliOhms MAX.
CONTACT RESISTANCE (OUTER)	3.0 MilliOhms MAX.
ENVIRONMENTAL CHARACTERISTICS	
OPERATING TEMPERATURE	-62 °C TO 165 °C
VIBRATION	MIL-STD-202, METHOD 204, CONDITION D
MECHANICAL SHOCK	MIL-STD-202, METHOD 213, CONDITION I
THERMAL SHOCK	MIL-STD-202, METHOD 107, CONDITION (NO VIBRATION)
MOISTURE RESISTANCE	MIL-STD-202, METHOD 106, CONDITION (NO VIBRATION)
CORROSION	MIL-STD-202, METHOD 101, CONDITION B, 5%
MATERIALS AND FINISH	
CONTACT	BERYLLIUM COPPER, ASTM-B-196 GOLD PLATED PER MIL-DTL-45204, OVER NICKEL PLATE PER AMS-QQ-N-290
BODY & CLAMP NUT	STEEL, CORROSION RESISTANT, PER ASTM-A-582, UNS NO. S30300, PASSIVATE PER ASTM-A-967
LOCKNUT	STEEL, CORROSION RESISTANT, PER ASTM-A-582, UNS NO. S30300, GOLD PLATE PER MIL-DTL-45204, OVER NICKEL PLATE PER AMS-QQ-N-290
DIELECTRIC BEAD(S)	POLYETHRMIDE THERMOPLASTIC, PER ASTM-D-5205
LOCKWASHER	TIN BRASS (UNS C42500) PER ASTM-B-591 OR PHOSPHOR BRONZE (C5191R-H) PER JIS H3110, GOLD PLATE PER MIL-DTL-45204, OVER NICKEL PLATE PER AMS-QQ-N-290
CONTACT RING	BRASS, PER ASTM-B-16, GOLD PLATE PER MIL-DTL-45204, OVER NICKEL PLATE PER QQ-N-290
INSULATOR	TFE FLUOROCARBON PER ASTM-D-1710
GASKET	SILICONE RUBBER PER ZZ-R-765
ELBOW	STEEL, CORROSION RESISTANT, PER ASTM-A-269, UNS NO. S30400 (TP 304) OR S30403 (TP 304L), PASSIVATED PER ASTM-A-967
APPLICATION	
CABLE(S)	147 SERIES CABLE
INSTALLATION	PER CONFIGURATOR
CONNECTOR CODE SHEET 1	320
CONNECTOR CODE SHEET 2	3P0

*THIS DRAWING IS PROPRIETARY AND CONFIDENTIAL.*



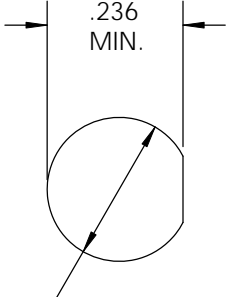
ISOMETRIC VIEW  
SCALE 2:1



.438 HEX REF.

.491 REF. ACROSS POINTS

Ø .250 MIN.



.236 MIN.

RECOMMENDED PANEL CUTOUT

2.145 REF. (NOTE 1)

1.280 REF.

.96 REF.

.42 REF.

.125 MAX PANEL

.10 REF.

.076 REF.

- RP -

.312 HEX REF.

Ø .301 REF. (NOTE 1)

Ø .197 REF. (NOTE 1)

MICRO-COAX  
147 SERIES  
UTIFLEX® CABLE

REV.

DESCRIPTION

DATE

BY

APPVD

A

INITIAL RELEASE - ECO 106088

11/30/2010

CCF

RS

B

ECO 125444

8/22/2012

MJM

RS

THIS SPECIFICATION IS THE PROPERTY OF MICRO-COAX, INC. AND MAY NOT BE USED OR COPIED WITHOUT THE EXPRESS WRITTEN PERMISSION OF MICRO-COAX, INC.

INITIALS

DATE

DWN.

MJM

10/30/08

CHKD.

CCF

8/23/12

APPVD.

TOLERANCES UNLESS OTHERWISE SPECIFIED

XX

± .02

.XXX

± .005

.XXXX

± .0010

ANGLES

± 2°

TITLE

SMA BULKHEAD JACK, 147 SERIES

ALL DIMENSIONS IN INCHES UNLESS OTHERWISE SPECIFIED. SCREW THDS. TO BE IN ACCORD WITH ANSI B1.1-1989.

FSCM NO.

64639

SIZE

B

SCALE

3:1

SHEET NO.

1 OF 2

DRAWING NO.

SD903021

REV

B

**MICRO-COAX®**

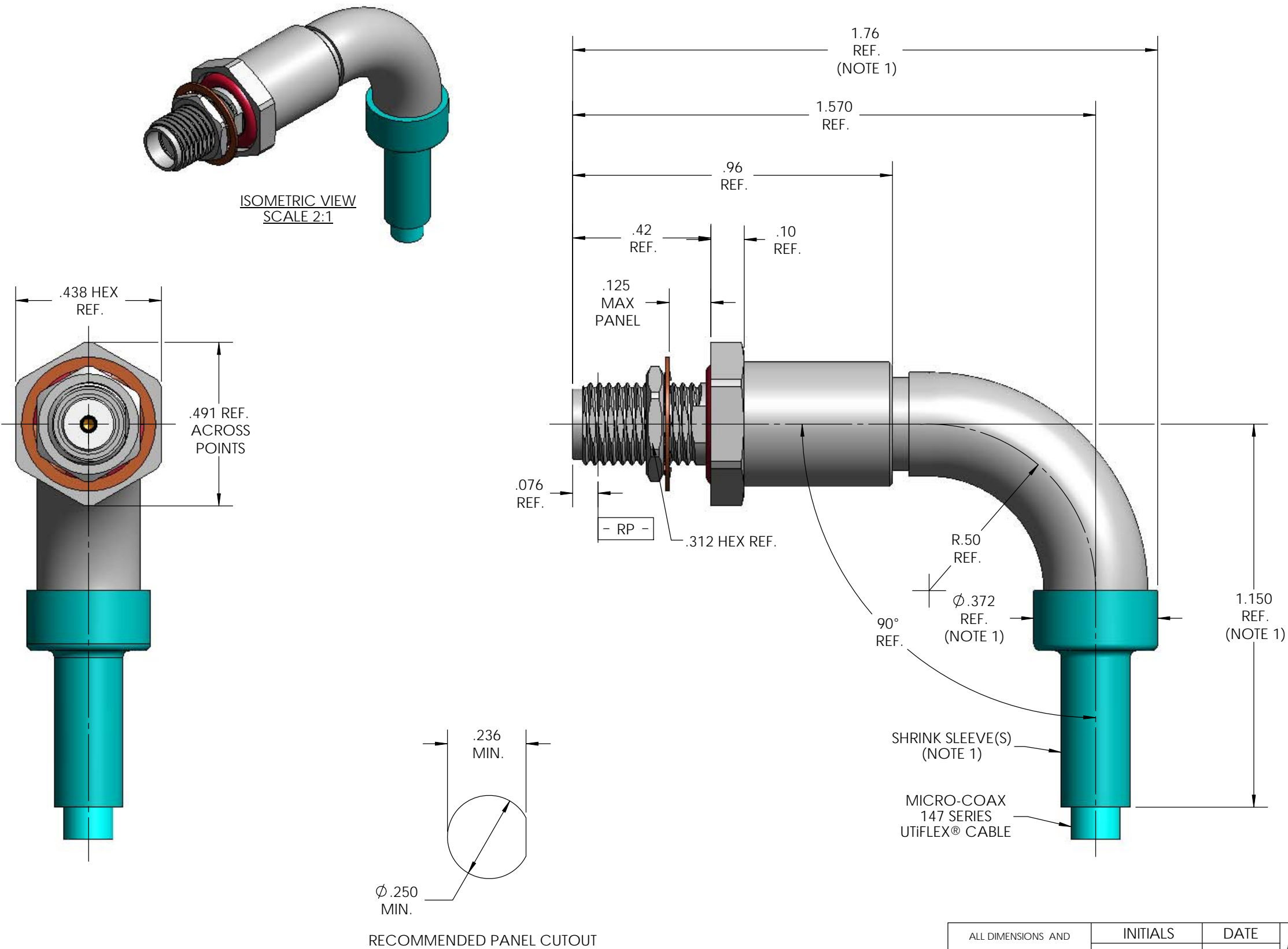
Leading the way in transmission line solutions.

Copyright Micro-Coax, Inc.

NOTES:

1. MARKER LOCATION ON THIS DRAWING IS FOR REFERENCE ONLY AND IS SUBJECT TO CHANGE WITHOUT NOTICE.

2. SEE SHEET 2 FOR 90° ELBOW CONFIGURATION.



NOTE:  
1. MARKER LOCATION ON THIS DRAWING IS FOR REFERENCE ONLY AND IS SUBJECT TO CHANGE WITHOUT NOTICE.

ALL DIMENSIONS AND TOLERANCES IN INCHES UNLESS OTHERWISE SPECIFIED.		INITIALS		DATE	<b>MICRO-COAX</b> <sup>®</sup> Leading the way in transmission line solutions. Copyright Micro-Coax, Inc.		
		DWN.	MJM	10/30/08			
.XX	± .02	CHKD.	CCF	8/23/12	TITLE SMA BULKHEAD JACK, 90° ELBOW, 147 SERIES		
.XXX	± .005	APPVD.					
.XXXX	± .0010						
ANGLES	± 2°						
		FSCM NO.	SIZE	SCALE	SHEET NO.	DRAWING NO.	REV.
		64639	B	3:1	2 OF 2	SD903021	B