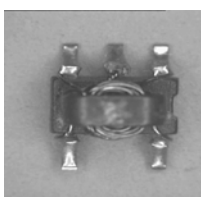


# E-Series RF 2.56:1 Impedance Ratio Center Taped Transformer 5 - 65 MHz

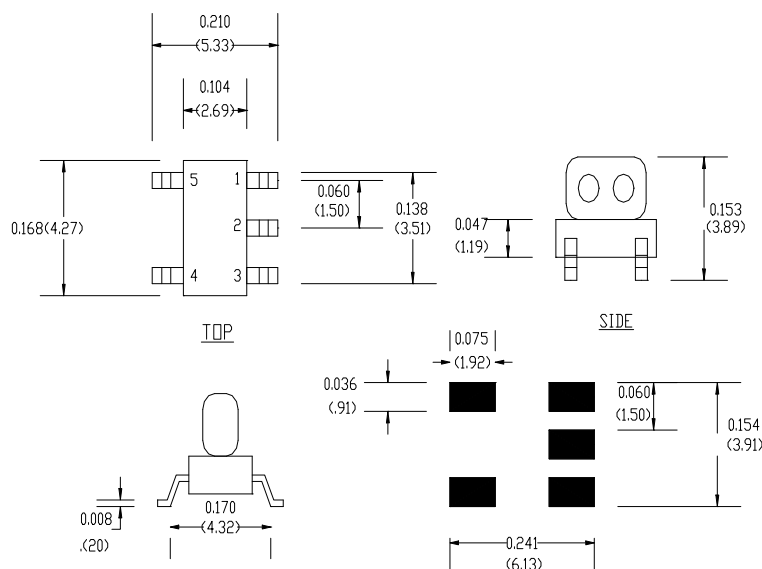


## Features

- Surface Mount
- 1:2.56 Impedance Ratio Center taped.
- Available on Tape & Reel



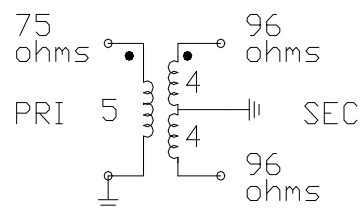
## SM-138 Package



## Description

M/A-COM's MABAES0017 is a 2.56:1 RF Flux Coupled transformer in a low cost, surface mount package. Ideally suited for high volume CATV applications.

## Schematic



## Electrical Specifications @25°C

Parameter	Units	Nominal	Typical	Minimum	Maximum
Frequency Range 5-65	MHz	—	—	—	—
Insertion Loss 5-65 MHz	dB	—	0.8	—	1.0
Amplitude Balance 5-65 MHz	dB	—	0.02	—	0.1
Phase Balance 5-65 MHz	Degrees	—	0.2	—	1.0

Please Note that the photograph above indicates package shape only, unit may be wired differently.

S 1599 B

**ADVANCED:** Data Sheets contain information regarding a product M/A-COM Technology Solutions is considering for development. Performance is based on target specifications, simulated results, and/or prototype measurements. Commitment to develop is not guaranteed.

**PRELIMINARY:** Data Sheets contain information regarding a product M/A-COM Technology Solutions has under development. Performance is based on engineering tests. Specifications are typical. Mechanical outline has been fixed. Engineering samples and/or test data may be available. Commitment to produce in volume is not guaranteed.

• **North America** Tel: 800.366.2266 • **Europe** Tel: +353.21.244.6400  
• **India** Tel: +91.80.4155721 • **China** Tel: +86.21.2407.1588

Visit [www.macomtech.com](http://www.macomtech.com) for additional data sheets and product information.

M/A-COM Technology Solutions Inc. and its affiliates reserve the right to make

## Absolute Maximum Ratings

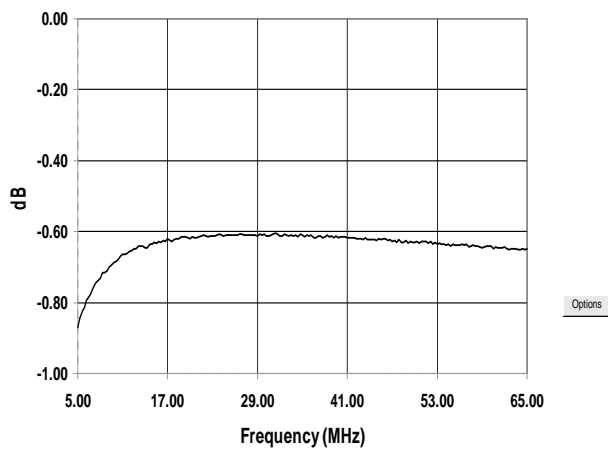
Parameter	Absolute Maximum
RF Power	250 mW
DC Current	30 mA
Operating/Storage Temperature	-40°C to +85°C

## Functional Configuration

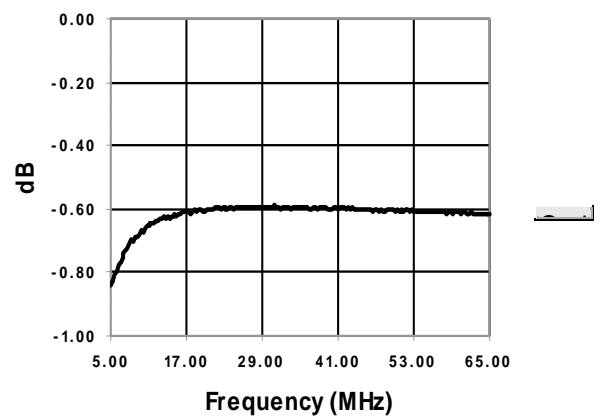
Function	Pin No.
Primary	4
Primary Dot	5
Secondary	3
Secondary Dot	1
Centre Tap	2

## Typical Performance @ +25°C

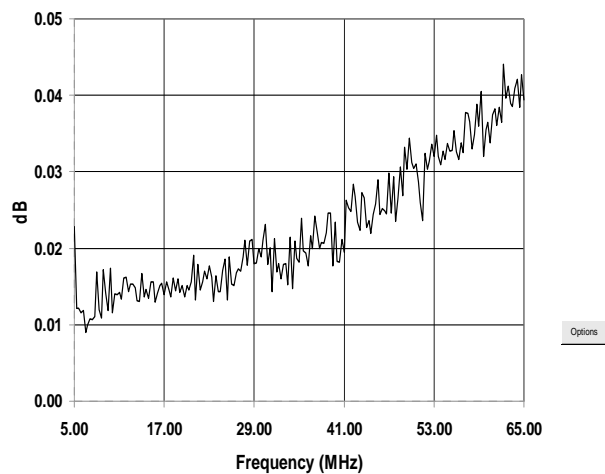
### Insertion Loss 1



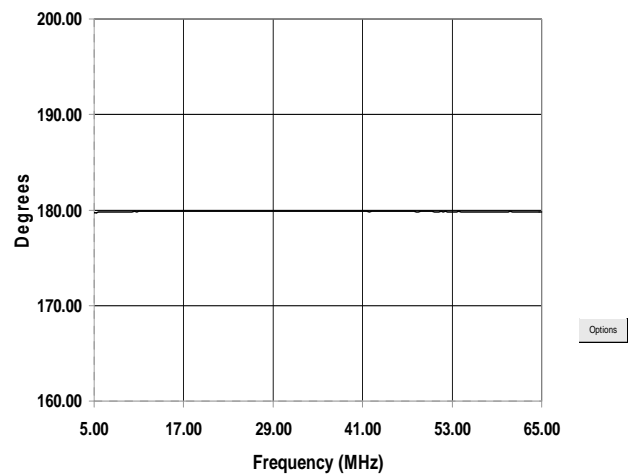
### Insertion Loss 2



### Amplitude Balance



### Phase Balance



S 1599 B

**ADVANCED:** Data Sheets contain information regarding a product M/A-COM Technology Solutions is considering for development. Performance is based on target specifications, simulated results, and/or prototype measurements. Commitment to develop is not guaranteed.  
**PRELIMINARY:** Data Sheets contain information regarding a product M/A-COM Technology Solutions has under development. Performance is based on engineering tests. Specifications are typical. Mechanical outline has been fixed. Engineering samples and/or test data may be available. Commitment to produce in volume is not guaranteed.

• **North America** Tel: 800.366.2266 • **Europe** Tel: +353.21.244.6400  
 • **India** Tel: +91.80.4155721 • **China** Tel: +86.21.2407.1588  
 Visit [www.macomtech.com](http://www.macomtech.com) for additional data sheets and product information.

M/A-COM Technology Solutions Inc. and its affiliates reserve the right to make