
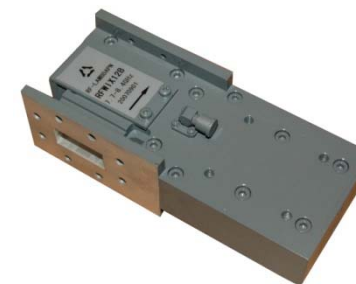
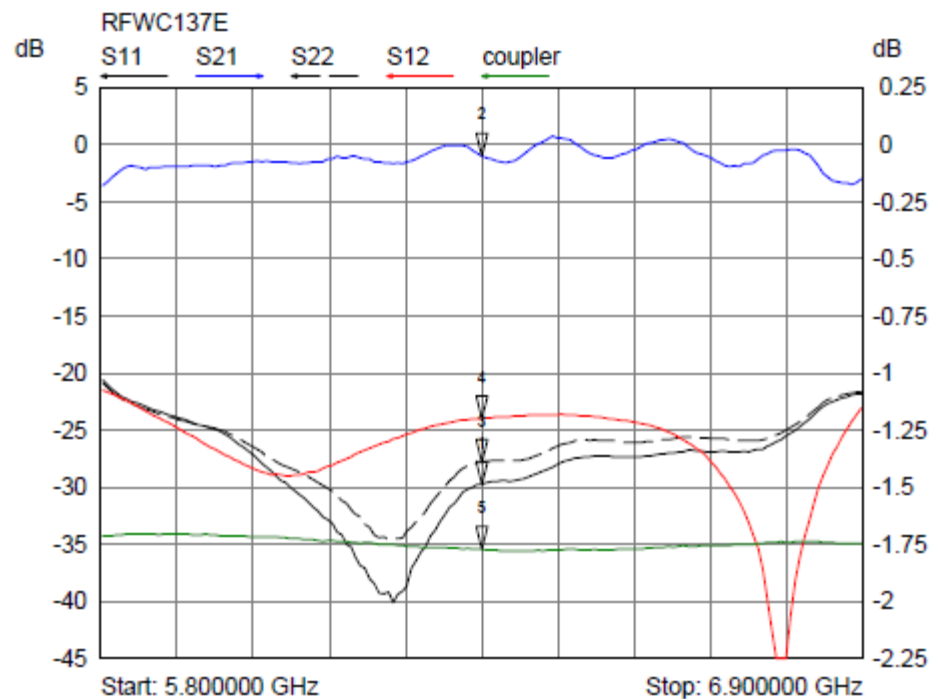


2.0	Environment specifications	
2.1	Operation Temp.	-25°C~+85°C
2.2	Storage Temp.	-40°C~+90°C
2.3	Altitude	45000 ft
2.4	Vibration	10g rms (15 degree 2KHz)
2.5	Humidity	100% RH at 35c, 95%RH at 40 deg c
2.6	Shock	20G for 11msec

PAGE 1 OF 1		DATE Jun 15th 2006
PROPRIETARY INFORMATION THE INFORMATION CONTAINED IN THIS DOCUMENT IS THE PROPERTY OF RF-LAMBDA EXCEPT AS SPECIFICALLY AUTHORIZED IN WRITINGS BY RF-LAMBDA. THE HOLDER OF THIS DOCUMENT SHALL KEEP THE INFORMATION CONTAINED HEREIN CONFIDENTIAL AND SHALL PROTECT SAME IN THE WHOLE OR IN PART FROM DISCLOSURE AND DISSEMINATION OF ALL THIRD PARTIES AND SHALL USE SAME FOR OPERATING AND MAINTENANCE PURPOSES ONLY		DESIGN RFPC RF-LAMBDA RFPC
	RFWC112A WAVEGUIDE HIGH POWER ISOLATOR	CAD MODEL REVISION 19 ASSEMBLY REVISION VS51 ASSEMBLY NAME RFLVR10 DRAWING NUMBER
www.rflambda.com		D05-03
RF-LAMBDA		SIZE LT
SHEETS		1 OF 1



Mkr	Trace	X-Axis	Value	Notes
1	S11	6.350000 GHz	-29.7660 dB	
2	S21	6.350000 GHz	-0.0520 dB	
3	S22	6.350000 GHz	-27.8210 dB	
4	S12	6.350000 GHz	-23.9650 dB	
5	coupler	6.350000 GHz	-35.4020 dB	

PAGE 1 OF 1	DATE Jun 15th 2006
PROPRIETARY INFORMATION THE INFORMATION CONTAINED IN THIS DOCUMENT IS THE PROPERTY OF RF-LAMBDA. THE HOLDER OF THIS DOCUMENT SHALL KEEP ALL INFORMATION CONTAINED HEREIN CONFIDENTIAL AND SHALL PROTECT SAME IN THE WHOLE OR IN PART FROM DISCLOSURE AND DISSEMINATION OF ALL THIRD PARTIES AND SHALL USE SAME FOR OPERATING AND MAINTENANCE PURPOSES ONLY.	DESIGN RFPC
RF-LAMBDA	RFPC
CAD MODEL REVISION 19	ASSEMBLY REVISION VS51
ASSEMBLY NAME RFLVR10	DRAWING NUMBER D05-03
www.rflambda.com	SIZE LT
RF-LAMBDA	SHEETS 1 OF 1