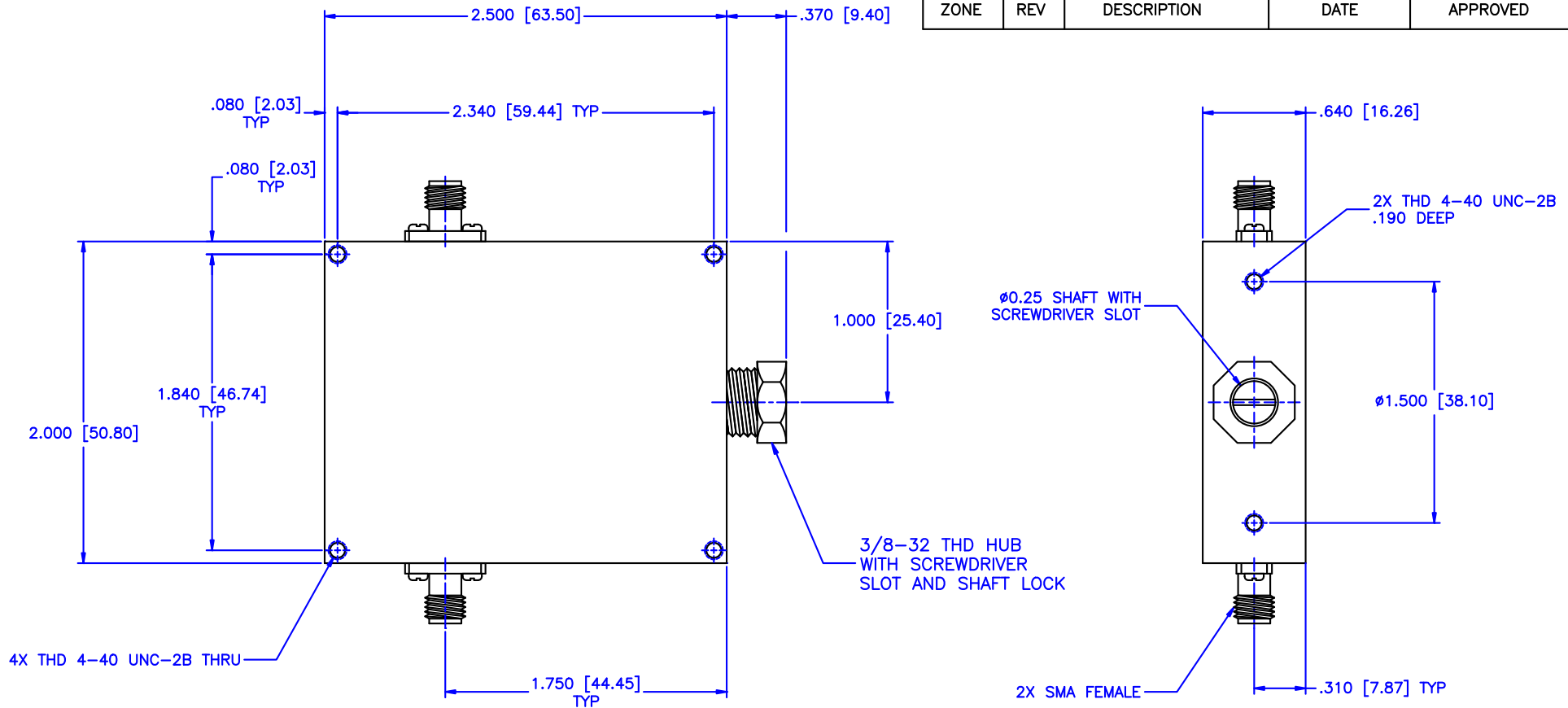


REVISIONS				
ZONE	REV	DESCRIPTION	DATE	APPROVED



#### Specifications:

Frequency Range: 8-12.4 GHz  
 Attenuation: 10dB  
 Insertion Loss: 0.5 Max.  
 VSWR: 1.50:1  
 RF Power: 7W Average, 3kW Peak

#### Environmental:

Temperature range: -55°C to +110°C  
 Shock: 15 G's, 11mS, 1/2 sine  
 Vibration: 3 G's overall  
 Altitude: 40,000 ft. Survival 25,000ft Operating

MATERIAL:		<b>MCLI</b> MICROWAVE COMMUNICATIONS LABORATORIES INC. 7255 30TH AVE. N. SAINT PETERSBURG, FL 33710 TEL: (727) 344-6254 FAX: (727) 381-6116 http://WWW.MCLI.COM		SCALE:	
				N/A	
UNLESS OTHERWISE SPECIFIED: TOLERANCES IN (INCHES) OR [mm] (MILLIMETERS) FRACTIONS: $\pm 1/64$ DECIMALS: $\pm 0.01$ $\pm 0.005$ ANGLE: $\pm 1/2^\circ$		DRAWING TITLE:			
		CONTINUOUSLY VARIABLE ATTENUATOR			
DRAWN: Paiboon Luekhamhan DATE: 02-08-2011		PART NO.			
		CVA10-10			
APPROVED: T. Nguyen DATE: 02-08-2011		CAGE CODE:		SIZE:	REV:
		0D2L5		A	N/A
THIRD ANGLE PROJECTION 		DWG NO.		DO NOT SCALE THE DRAWING	
		85372			