

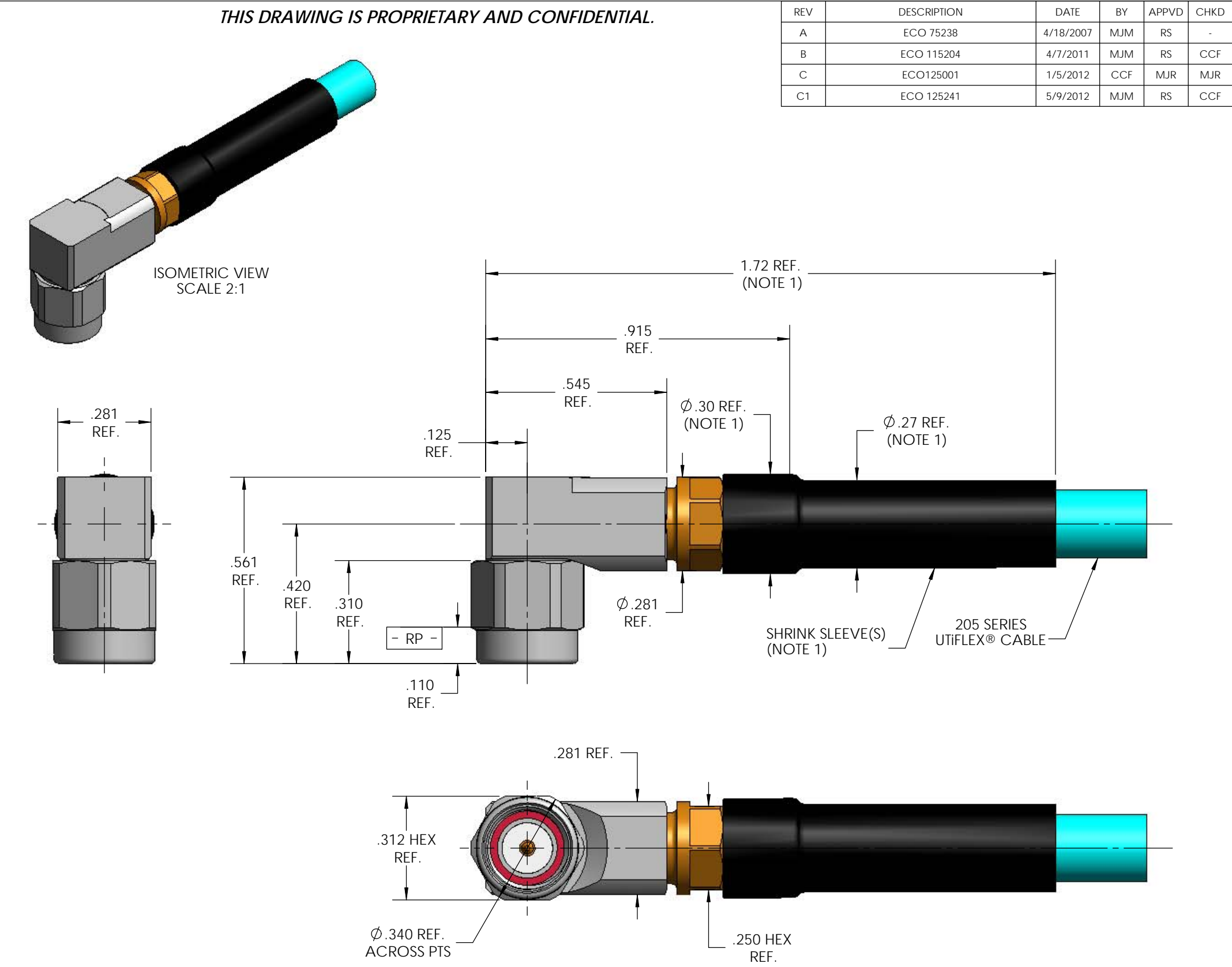
MECHANICAL CHARACTERISTICS	
INTERFACE	MIL-STD-348, FIGURE 310-1
IN ACCORDANCE WITH THE INTENT OF SLANT SHEET	MIL-PRF-39012/56 REF.
RECOMMENDED MATING TORQUE	9 IN-LBS. NOM.
COUPLING PROOF TORQUE	15 IN-LBS. MIN.
COUPLING NUT RETENTION	60 LBS. MIN.
FORCE TO ENGAGE	2 IN-LBS. MAX.
FORCE TO DISENGAGE	2 IN-LBS. MIN.
DURABILITY	500 CYCLES MIN.
AXIAL CONTACT RETENTION (FROM INTERFACE)	6 LBS. MIN.
AXIAL CONTACT RETENTION (FROM CABLE)	6 LBS. MIN.
CABLE RETENTION	20 LBS. MIN.
MASS	MASS = 6.67 GRAMS NOM.

ELECTRICAL CHARACTERISTICS	
IMPEDANCE	50 Ohms NOM.
MAXIMUM FREQUENCY	18 GHz
VSWR DC - 12.46 GHz	1.12:1 MAX.
12.46 - 18 GHz	1.16:1 MAX.
INSERTION LOSS	0.04 √F (GHz) dB MAX.
DIELECTRIC WITHSTANDING VOLTAGE	1275 Vrms MIN.
INSULATION RESISTANCE	5000 MegaOhms MIN.
RF LEAKAGE DC - 18 GHz	-90 dB MIN.
CORONA	330 Vrms MIN. @ 70,000 FEET
RF HIGH POTENTIAL	850 Vrms MIN.
CONTACT RESISTANCE (INNER)	4.0 MilliOhms MAX.
CONTACT RESISTANCE (OUTER)	2.0 MilliOhms MAX.

ENVIRONMENTAL CHARACTERISTICS	
OPERATING TEMPERATURE	-62°C TO 165°C
VIBRATION	MIL-STD-202, METHOD 204, CONDITION D
MECHANICAL SHOCK	MIL-STD-202, METHOD 213, CONDITION I
THERMAL SHOCK	MIL-STD-202, METHOD 107, CONDITION B
CORROSION	MIL-STD-202, METHOD 101, CONDITION B, 5%
MOISTURE RESISTANCE	MIL-STD-202, METHOD 106, CONDITION (NO VIBRATION)

MATERIALS AND FINISH	
BODY & COUPLING NUT	STEEL, CORROSION RESISTANT, PER ASTM-A-582, UNS NO. S30300, PASSIVATE PER ASTM-A-967
CONTACT(S) & REAR BODY	BERYLLIUM COPPER, ASTM-B-196, GOLD PLATED PER MIL-DTL-45204, OVER NICKEL PLATE PER AMS-QQ-N-290
SNAP RING	BERYLLIUM COPPER, PER ASTM-B-197
INSULATOR(S)	TFE FLUOROCARBON PER ASTM-D-1710
DIELECTRIC BEADS	POLYETHERIMIDE THERMOPLASTIC PER ASTM-D-5205
GASKET	SILICONE RUBBER PER ZZ-R-765

APPLICATION	
CABLE(S)	205 SERIES CABLE
INSTALLATION	PER CONFIGURATOR



NOTE:

- MARKER LOCATION ON THIS DRAWING IS FOR REFERENCE ONLY AND IS SUBJECT TO CHANGE WITHOUT NOTICE.
- ALL SPECIFICATIONS LISTED ON THIS DRAWING WILL ALSO APPLY TO CONNECTOR 903671-1.

REV	DESCRIPTION	DATE	BY	APPVD	CHKD
A	ECO 75238	4/18/2007	MJM	RS	-
B	ECO 115204	4/7/2011	MJM	RS	CCF
C	ECO125001	1/5/2012	CCF	MJR	MJR
C1	ECO 125241	5/9/2012	MJM	RS	CCF

THIS SPECIFICATION IS THE PROPERTY OF MICRO-COAX, INC. AND MAY NOT BE USED OR COPIED WITHOUT THE EXPRESS WRITTEN PERMISSION OF MICRO-COAX, INC.		INITIALS		DATE		<div><b>MICRO-COAX<sup>®</sup></b> <i>Leading the way in transmission line solutions.</i> <i>Copyright Micro-Coax, Inc.</i></div>					
		DWN.	MJM	4/18/07							
		CHKD.	CCF	4/21/11							
		APPVD.									
TOLERANCES UNLESS OTHERWISE SPECIFIED		TITLE									
		SMA PLUG MITER RIGHT ANGLE, 205 SERIES CABLE									
.XX	± .02	ALL DIMENSIONS IN INCHES UNLESS OTHERWISE SPECIFIED. SCREW THDS. TO BE IN ACCORD WITH ANSI B1.1-1989.		FSCM NO.  64639	SIZE  B	SCALE  3:1	SHEET NO.  1 OF 1	DRAWING NO.  SD903671	REV  C1		
.XXX	± .005										
.XXXX	± .0010										
ANGLES	± 2°										