

DA6 VARIABLE ATTENUATOR

Digital Attenuator, 0.3W, 6.0 GHz, SMA.



REQUEST A QUOTE

CALL

(+1) 301.963.4630

OR VISIT US ONLINE AT
WEINSCHELASSOCIATES.COM

Broad Frequency Range
High Accuracy and Repeatability
Control Software Provided
USB Interface

Dimensions & Weight: Length: 56.00 mm; Width: 32.00 mm; Height: 13.00 mm

Connection & Mounting: SMA stainless steel connectors per MIL-STD-348A, interface dimensions mate non-destructively with MIL-C-39012. Thru-holes for mounting.

Construction: RoHs Compliant

Power: Low Power (up to 10W)

Average Power: 0.3

Directionality: Bidirectional

Frequency Range: dc to 6.0

Attenuation Range: 30,60, or 90 dB

Tel. 877.948.8342 ♦ Fax. 301.963.8640 ♦ sales@weinschelassociates.com
www.weinschelassociates.com

Attenuation Accuracy: 0.5 ± dB

Nominal Impedance: 50

Temperature Range: Operating, -55°C; Non-Operating, -60°C to Operating, +85°C; Non-Operating, +125°C

VSWR: 1.50:1 max

Insertion Loss:

Frequency Range (GHz)	dc to 4.0	4.0 to 6.0
DA6-30 Insertion Loss	3.0	4.0
DA6-60 Insertion Loss	7.0	9.0
DA6-90 Insertion Loss	11.0	13.0

Switching Speed: 100 ns

Step Size: 0.5

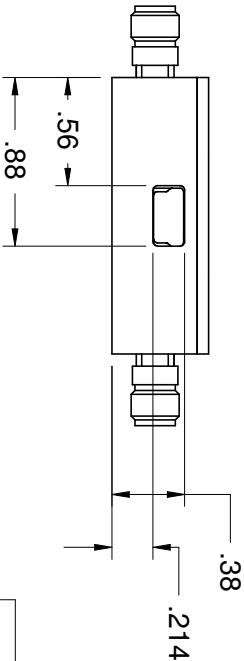
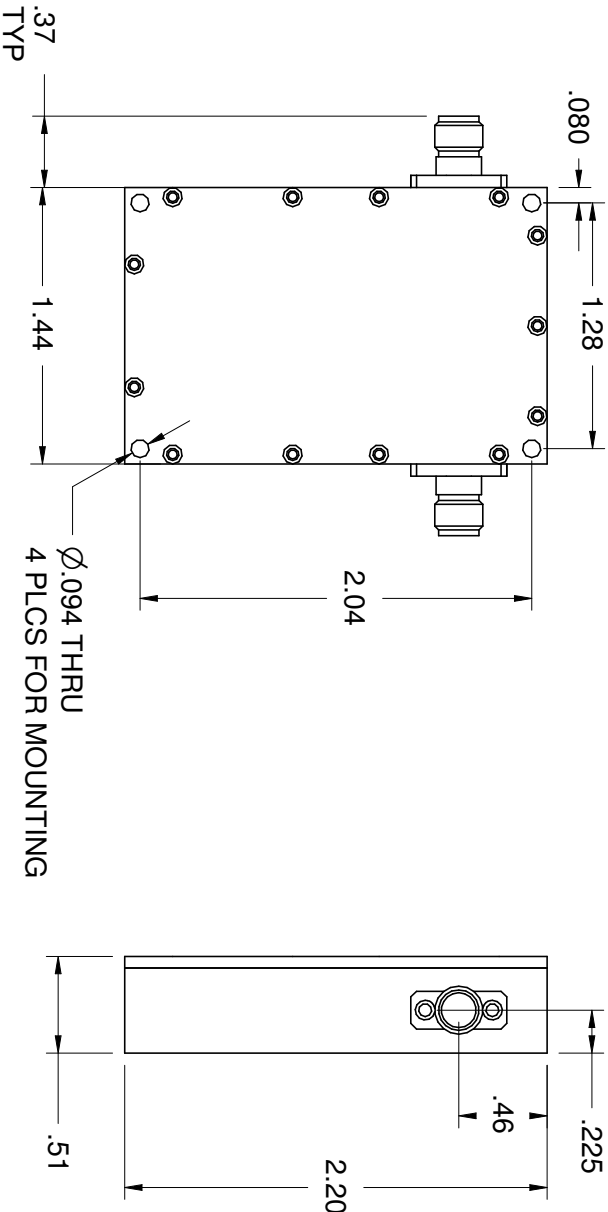
Input Power: +22 dBm

**Input Third Order
Intercept Point:** +32 dBm

**Programming Interface
Options:** USB 2.0

**Input Power
Requirements:** Powered via USB

NOTES:
1. SCREWS TO ASSEMBLE CONNECTORS AND COVER TO HOUSING
ARE NOT SHOWN



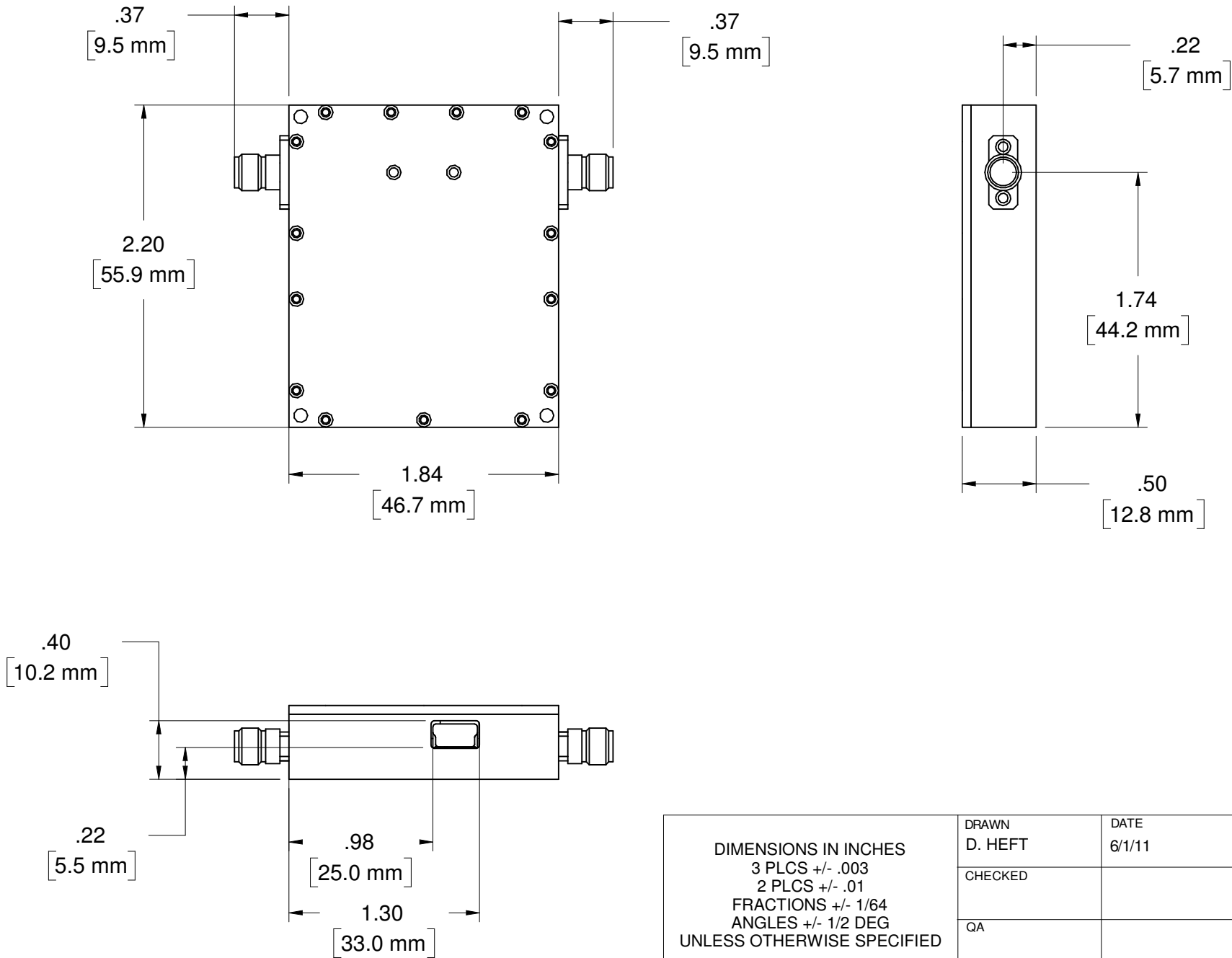
REVISIONS				
ZONE	REV	DESCRIPTION	DATE	APPROVED

DIMENSIONS IN INCHES 3 PLCS +/- .003 2 PLCS +/- .01 FRACTIONS +/- 1/64 ANGLES +/- 1/2 DEG UNLESS OTHERWISE SPECIFIED	DRAWN	DATE	WEINSCHTEL ASSOCIATES 19212 ORBIT DRIVE GAITHERSBURG, MD 20879			
	D. HEFT	2/9/09				
	CHECKED					
	QA					
	MFG					
MATL: NA			SIZE	FSCM NO.	DWG NO.	REV
			B	0H3E9		1
FINISH: NA	APPROVED		SCALE	NONE	SHEET	1 OF 1
DA6-60 OUTLINE						

PROPERTY OF nVISION INDUSTRIES, INC., COMPANY CONFIDENTIAL

NOTES:
1. SCREWS TO ASSEMBLE CONNECTORS AND COVER TO HOUSING
ARE NOT SHOWN

REVISIONS				
ZONE	REV	DESCRIPTION	DATE	APPROVED



PROPERTY OF nVISION INDUSTRIES, INC, COMPANY CONFIDENTIAL

DIMENSIONS IN INCHES 3 PLCS +/- .003 2 PLCS +/- .01 FRACTIONS +/- 1/64 ANGLES +/- 1/2 DEG UNLESS OTHERWISE SPECIFIED	DRAWN D. HEFT	DATE 6/1/11	WEINSCHEL ASSOCIATES 19212 ORBIT DRIVE GAITHERSBURG, MD 20879		
	CHECKED				
	QA		DA6-90 OUTLINE		
	MFG				
MAT'L: NA	APPROVED		SIZE B	FSCM NO. 0H3E9	DWG NO.
FINISH: NA			SCALE NONE		REV 1
			SHEET 1 OF 1		