

## Single Junction Gull Wing Circulator 860 MHz—960 MHz

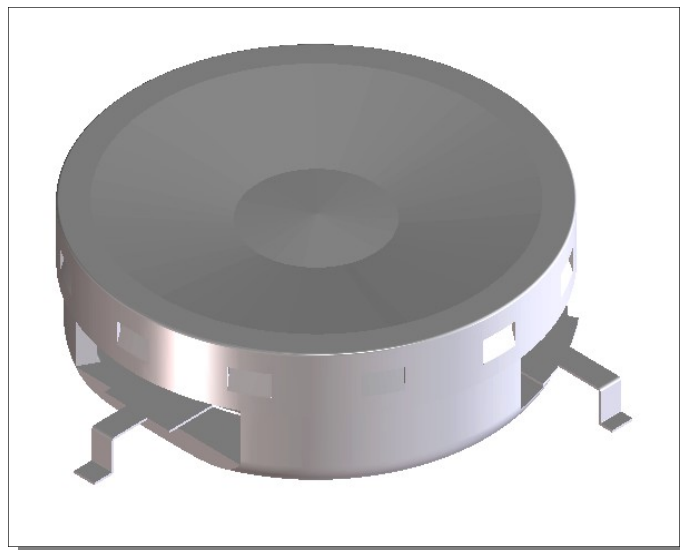
V2

### Features

- Designed for RFID market
- 22dB Isolation typical
- 0.25dB Insertion Loss
- Low cost package
- 260°C Reflow Compatible
- RoHS\* Compliant Version of the MAFRIN0370

### Description

This circulator is designed specifically for RFID applications and features high reliability performance at a low cost. It is in a low cost package ideally suited for high volume manufacturing. M/A Com is one of the largest suppliers of isolator and circulators in the world.



### Electrical Specifications: $T_A = +25^{\circ}\text{C}$ , $Z_0 = 50\ \Omega$

Parameter	Test Conditions	Units	Min	Typ	Max
Frequency Range	Over $T_{op}^1$	MHz	860		960
Insertion Loss	860 MHz—960 MHz, over $T_{op}^1$	dB		0.21	0.40
Isolation	860 MHz—960 MHz, over $T_{op}^1$	dB	18.0	29.0	
Return Loss	860 MHz—960 MHz, all ports, over $T_{op}^1$	dB	18.0	28.0	
Circulation	Over $T_{op}^1$			CW	

1. See "Absolute Maximum Ratings" for  $T_{op}$ .

### Absolute Maximum Ratings

Parameter	Absolute Maximum
Forward Power	100 Watts
Operating Temperature	-10°C to +85°C
Storage Temperature	-40°C to +100°C

1. Operation of this device above any one of these parameters may cause permanent damage.

\* Restrictions on Hazardous Substances, European Union Directive 2002/95/EC.

# MAFRIN0494

Single Junction Gull Wing Circulator  
860 MHz—960 MHz

V2

## Ordering Information

Part Number	Packaging
MAFRIN0494	Tray

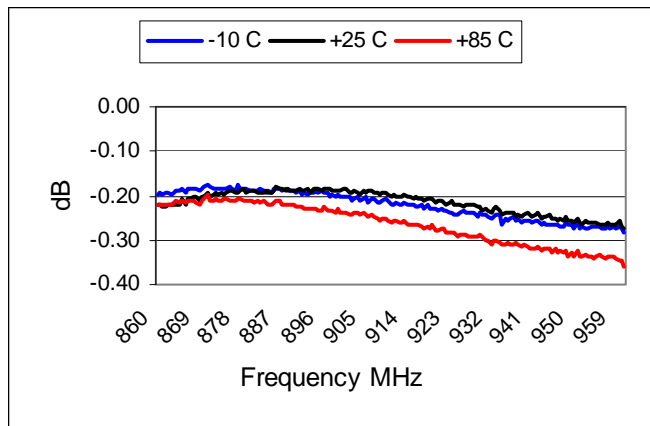
## Environmental Specifications

Devices are designed to function after exposure to the shock, vibration, thermal shock and moisture conditions typically encountered in base station and other infrastructure environments.

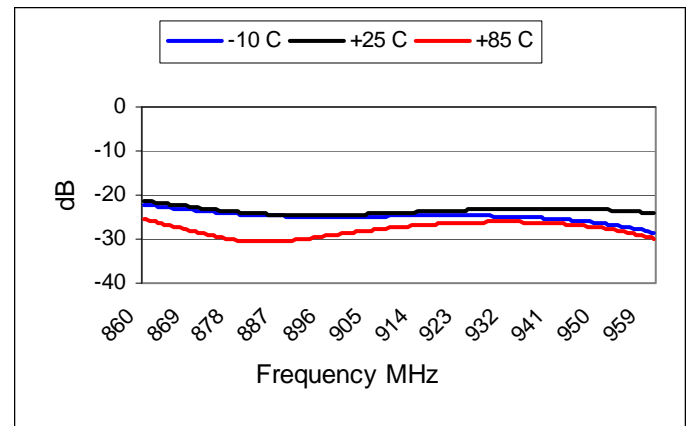
## S-Parameters

S-parameters are available on the M/A Com web-site at: [S-Parameters](#)

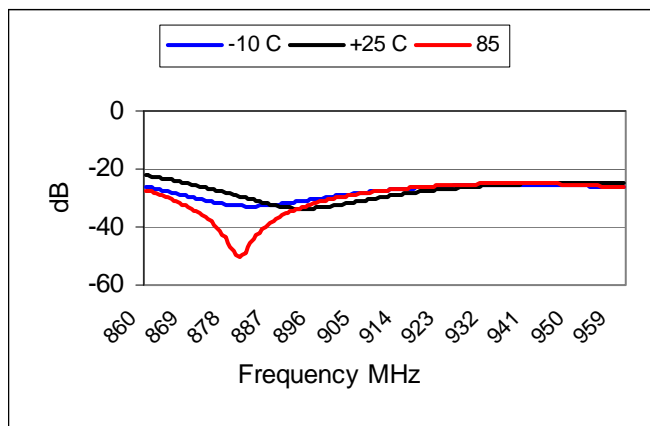
## Insertion Loss (S21)



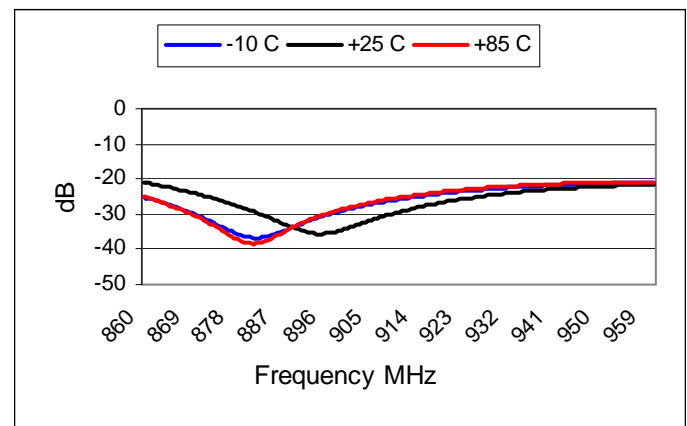
## Isolation (S12)



## Return Loss (S11)



## Return Loss (S22)



## V2

## Outline Drawing

