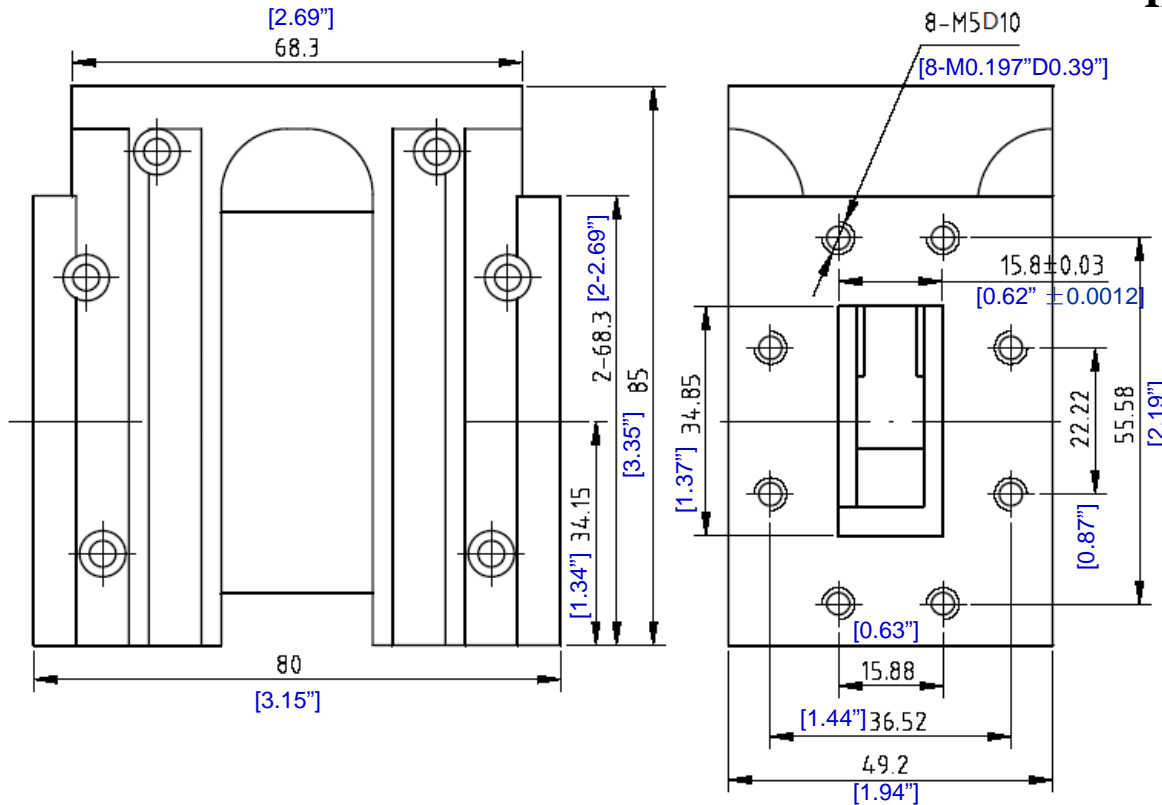


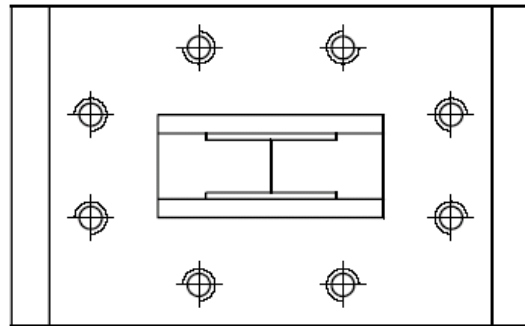
HIGH POWER WAVEGUIDE CIRCULATOR

– RFWC137D



1.0	Mechanical Specifications	
1.1	Waveguide type	Rectangular Waveguide WR137
1.2	Flange type	CPRF CPRG COVER
1.3	Flange Holes	Through
1.4	External Body Finish	Body painted with gray/black epoxy enamel

2.0	Environment specifications	
2.1	Operation Temp.	-40°C~+85°C
2.2	Storage Temp.	-45°C~+125°C
2.3	Altitude	45000 ft
2.4	Vibration	10g rms (15 degree 2KHz)
2.5	Humidity	100% RH at 35c, 95%RH at 40 deg c
2.6	Shock	20G for 11msc



3.0	Electrical Specifications	
3.1	Frequency Range	5.85~8.20GHz
3.2	Bandwidth	500MHz (5.9~6.4GHz as shown)
3.3	Max. VSWR	1.15:1
3.4	Insertion Loss	0.2dB (typ.) 0.3dB (max.)
3.5	Isolation	20dB
3.6	Forward Power	400W (CW)
3.7	Reverse Power	400W (CW)
3.8	Peak Power	4KW (8% duty cycle)

PAGE 1 OF 1	DATE Jun 15 th 2006
DESIGN RFLPC	DESIGN RFLPC
RF-LAMBDA RFLPC	RF-LAMBDA RFLPC
CAD MODEL REVISION 19	CAD MODEL REVISION 19
ASSEMBLY REVISION VS52	ASSEMBLY REVISION VS52
ASSEMBLY NAME RFLVR17	ASSEMBLY NAME RFLVR17
DRAWING NUMBER D05-1	DRAWING NUMBER D05-1
www.rflambda.com	www.rflambda.com
RF-LAMBDA	RF-LAMBDA
SIZE LT	SHEETS 1 OF 1