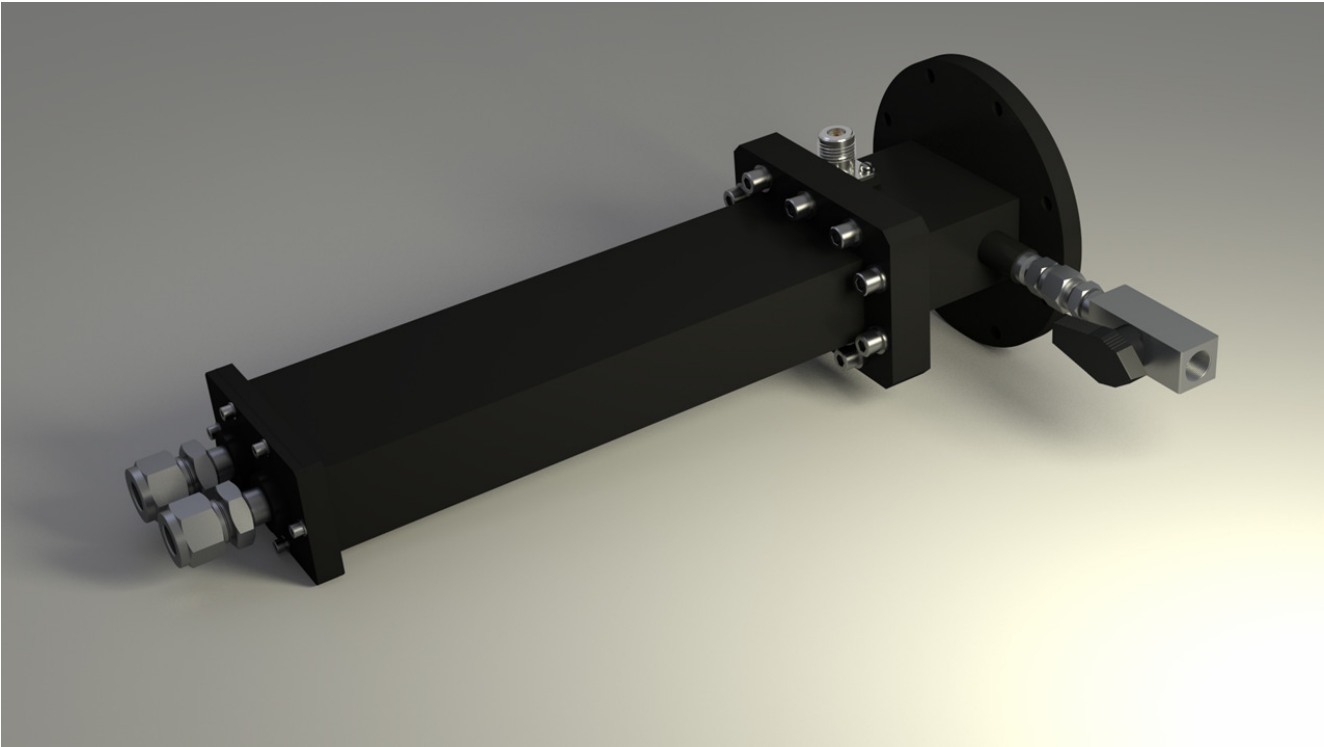


S-Band Water Load



| Specification | |
|------------------------------|------------|
| Operating Frequency | S-Band |
| Bandwidth | 50MHz |
| Average Power | 10kW |
| Peak Power | 7.5MW |
| Maximum Input VSWR | 1.2 : 1 |
| Waveguide Size | WR284 |
| Waveguide Gas | SF6 |
| Waveguide Operating Pressure | 30PSIG |
| Operating Temp | +5 to +40C |

- Designs built and validated up to 7.5MW peak and 10kW average power
- Part shown has optional 50dB probe and air pressure valve.
- Typically used in scientific, medical industries.