

Ultra-Reliable High Pass Filter

VHP-16

50Ω 1900 to 2700 MHz

Maximum Ratings

Operating Temperature	-55°C to 100°C
Storage Temperature	-55°C to 100°C
RF Power Input*	14W max. at 25°C

* Passband rating, derate linearly to 0.4x P_{max} at 100°C ambient.
Permanent damage may occur if any of these limits are exceeded.

Features

- rugged unibody construction, small size
- pass band insertion loss 1.0 dB typ.
- excellent power handling, 14W
- low cost

Applications

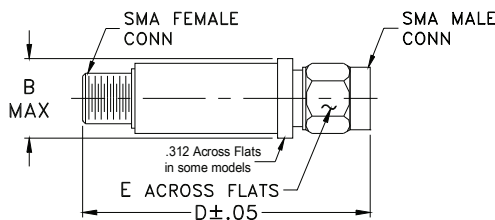
- sub-harmonic rejection of VCO
- transmitters/receivers
- lab use



CASE STYLE: FF704

Connectors	Model	Price	Qty.
SMA	VHP-16	\$29.95 ea.	(1-9)

Outline Drawing



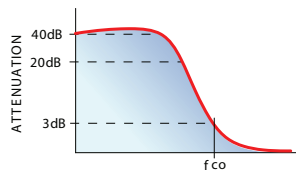
Outline Dimensions (inch/mm)

B	D	E	wt
.410	1.43	.312	grams
10.41	36.32	7.92	10.0

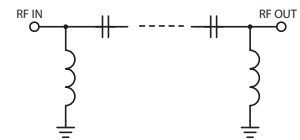
Electrical Specifications (T_{AMB}=25°C)

STOP BAND (MHz)	f _{co} , MHz Nom. (loss 3 dB)	PASSBAND (MHz)	VSWR (:1)	
			Stopband	Passband
(loss > 40 dB) (loss > 20 dB)	Typ.	(loss < 1.3 dB)	Typ.	Typ.
DC-1030 1300	1580	1900-2700	18	1.3

typical frequency response

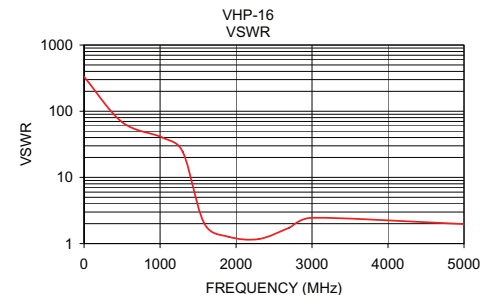


electrical schematic



Typical Performance Data

Frequency (MHz)	Insertion Loss (dB)	VSWR (:1)
1.00	101.37	330.92
500.00	62.34	68.33
1030.00	44.28	40.07
1300.00	23.15	24.17
1580.00	2.82	2.03
1900.00	1.12	1.27
2300.00	0.80	1.17
2700.00	1.01	1.74
3000.00	1.47	2.45
5000.00	1.03	1.97



Mini-Circuits®
ISO 9001 ISO 14001 AS 9100 CERTIFIED

P.O. Box 350166, Brooklyn, New York 11235-0003 (718) 934-4500 Fax (718) 332-4661 The Design Engineers Search Engine [minicircuits.com](http://www.minicircuits.com) Provides ACTUAL Data Instantly at [minicircuits.com](http://www.minicircuits.com)

IF/RF MICROWAVE COMPONENTS

For detailed performance specs
& shopping online see web site

Notes: 1. Performance and quality attributes and conditions not expressly stated in this specification sheet are intended to be excluded and do not form a part of this specification sheet. 2. Electrical specifications and performance data contained herein are based on Mini-Circuit's applicable established test performance criteria and measurement instructions. 3. The parts covered by this specification sheet are subject to Mini-Circuits standard limited warranty and terms and conditions (collectively, "Standard Terms"); Purchasers of this part are entitled to the rights and benefits contained therein. For a full statement of the Standard Terms and the exclusive rights and remedies thereunder, please visit Mini-Circuits' website at www.minicircuits.com/MCLStore/terms.jsp.

REV. B
M129173
VHP-16
ED10545B/2
WZ/AD/CP/AM
101029