

MECHANICAL CHARACTERISTICS

INTERFACE	MIL-STD-348, FIGURE 310-1
IN ACCORDANCE WITH THE INTENT OF SLANT SHEET	MIL-PRF-39012/55 REF.
RECOMMENDED MATING TORQUE	9 IN-LBS. NOM.
COUPLING PROOF TORQUE	15 IN-LBS. MIN.
COUPLING NUT RETENTION	60 LBS. MIN.
FORCE TO ENGAGE	2 IN-LBS. MAX.
FORCE TO DISENGAGE	2 IN-LBS. MIN.
DURABILITY	500 CYCLES MIN.
AXIAL CONTACT RETENTION (FROM INTERFACE)	6 LBS. MIN.
AXIAL CONTACT RETENTION (FROM CABLE)	6 LBS. MIN.
CABLE RETENTION	20 LBS. MIN.
MASS	7.75 GRAMS NOM.

ELECTRICAL CHARACTERISTICS

IMPEDANCE	50 Ohms NOM.
MAXIMUM FREQUENCY	18 GHz
VSWR DC - 12.4 GHz	1.12:1 MAX.
12.4 - 18 GHz	1.16:1 MAX.
INSERTION LOSS	0.04 \sqrt{f} (GHz) dB MAX.
DIELECTRIC WITHSTANDING VOLTAGE	1500 Vrms MIN.
INSULATION RESISTANCE	5000 MegaOhms MIN.
RF LEAKAGE DC - 18 GHz	-90 dB MIN.
CORONA	375 Vrms MIN. @ 70,000 FEET
RF HIGH POTENTIAL	1000 Vrms MIN.
CONTACT RESISTANCE (INNER)	4.0 Milliohms MAX.
CONTACT RESISTANCE (OUTER)	2.0 Milliohms MAX.

ENVIRONMENTAL CHARACTERISTICS

OPERATING TEMPERATURE	-100 °C TO 150 °C
VIBRATION	MIL-STD-202, METHOD 204, CONDITION D
MECHANICAL SHOCK	MIL-STD-202, METHOD 213, CONDITION I
THERMAL SHOCK	MIL-STD-202, METHOD 107, CONDITION B
CORROSION	MIL-STD-202, METHOD 101, CONDITION B, 5%

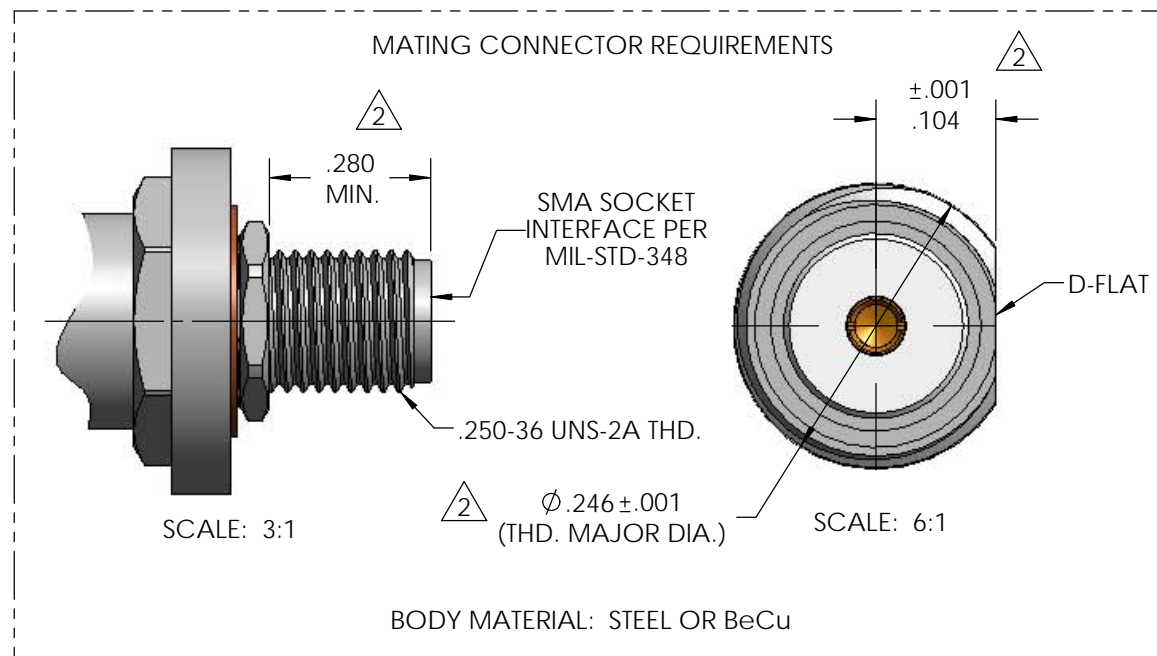
MATERIALS AND FINISH

MAIN BODY, LOCKING SLEEVE, COUPLING NUT	STEEL, CORROSION RESISTANT, ASTM-A-582, UNS NO. S30300, PASSIVATED PER ASTM-A-967
REAR BODY, CONTACT(S)	BERYLLIUM COPPER, ASTM-B-196, GOLD PLATED PER MIL-DTL-45204, OVER NICKEL PLATE PER AMS-QQ-N-290
SNAP RING	BERYLLIUM COPPER, PER ASTM-B-197
INSULATOR(S)	TFE FLUOROCARBON PER ASTM-D-1710
DIELECTRIC BEAD(S)	POLYETHERIMIDE THERMOPLASTIC, PER ASTM-D-5205
SPRING	316BRT STAINLESS STEEL, PASSIVATED PER ASTM-B-967
GASKET	SILICONE RUBBER PER A-A-59588

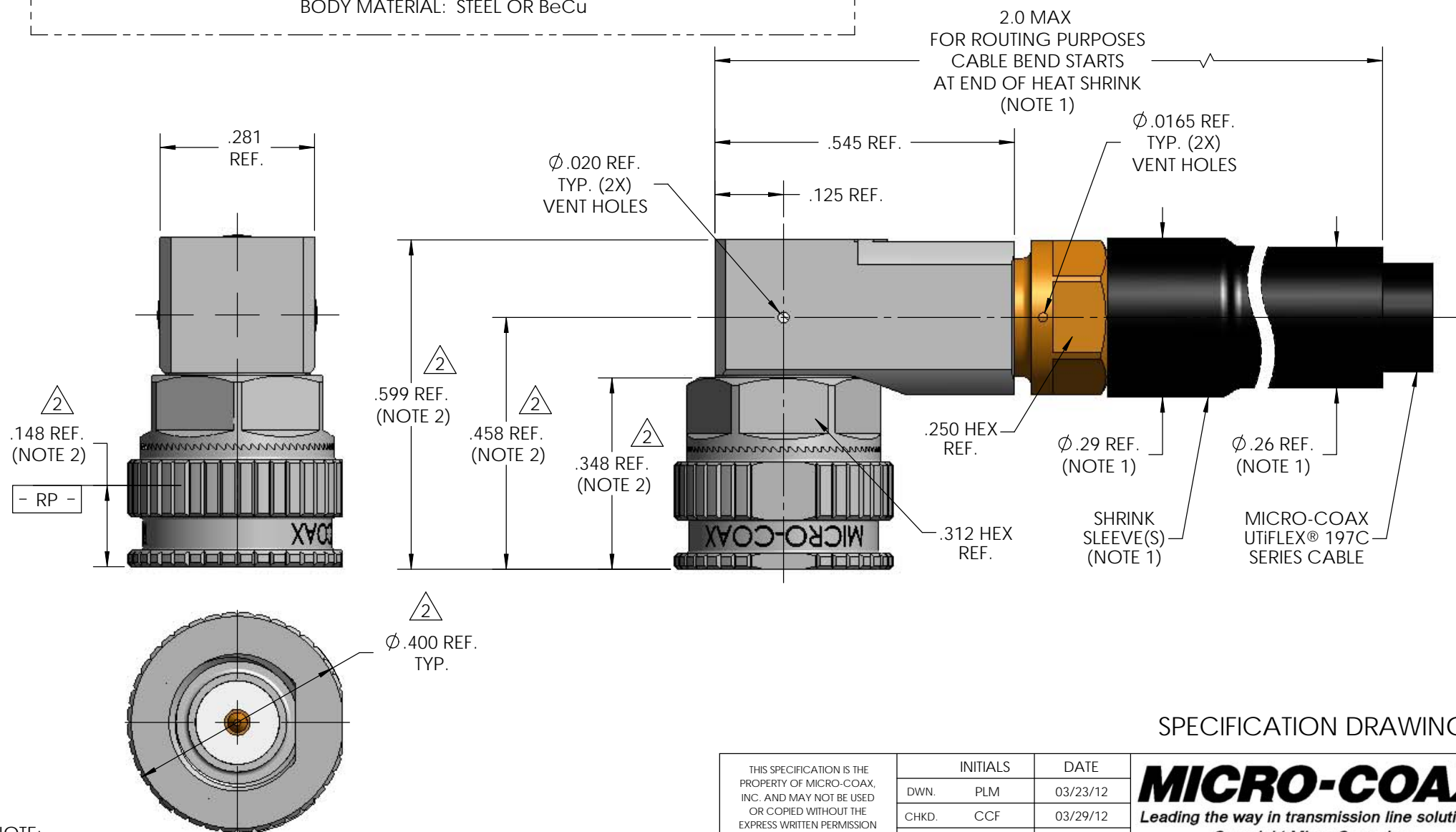
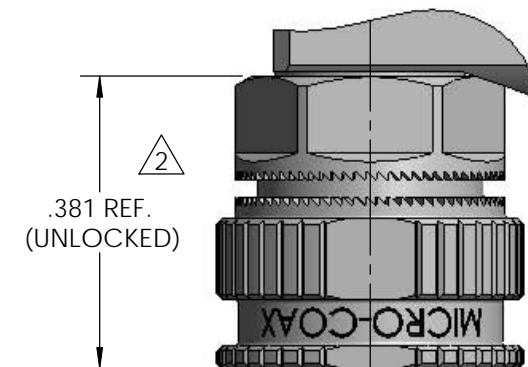
APPLICATION

CABLE(S)	UFB197C
INSTALLATION	PER CONFIGURATOR

THIS DRAWING IS PROPRIETARY AND CONFIDENTIAL.



REV	DESCRIPTION	DATE	BY	APPVD	CHKD
1	PRELIMINARY RELEASE	08/09/2012	PLM	RS	CCF
2	REVISED SMA BHJ BODY DIMENSIONAL REQUIREMENTS: REVISED LOCKING SLEEVE: REMOVED RED STRIPE	5/16/2013	PLM	RS	RS



NOTE:

1. MARKER LOCATION ON THIS DRAWING IS FOR REFERENCE ONLY AND IS SUBJECT TO CHANGE WITHOUT NOTICE.
2. DIMENSION VALUE BASED ON SLEEVE IN LOCKED POSITION.

THIS SPECIFICATION IS THE PROPERTY OF MICRO-COAX, INC. AND MAY NOT BE USED OR COPIED WITHOUT THE EXPRESS WRITTEN PERMISSION OF MICRO-COAX, INC.	INITIALS		DATE		<div>MICRO-COAX®</div> <div>Leading the way in transmission line solutions.</div> <div>Copyright Micro-Coax, Inc.</div>						
	DWN.	PLM	03/23/12								
	CHKD.	CCF	03/29/12								
	APPVD.										
TOLERANCES UNLESS OTHERWISE SPECIFIED			TITLE								
			SMA PLUG, MITER RIGHT ANGLE, SELF-LOCKING, REMOVABLE SLEEVE, VENT HOLES, 197C, SPACE GRADE								
.XX	± .02		ALL DIMENSIONS IN INCHES UNLESS OTHERWISE SPECIFIED. SCREW THDS. TO BE IN ACCORD WITH ANSI B1.1-1989.			FSCM NO.	SIZE	SCALE	SHEET NO.	DRAWING NO.	REV.
.XXX	± .005										
.XXXX	± .0010										
ANGLES	±2°										
			64639			B	4:1	1 OF 1	SD905173		2