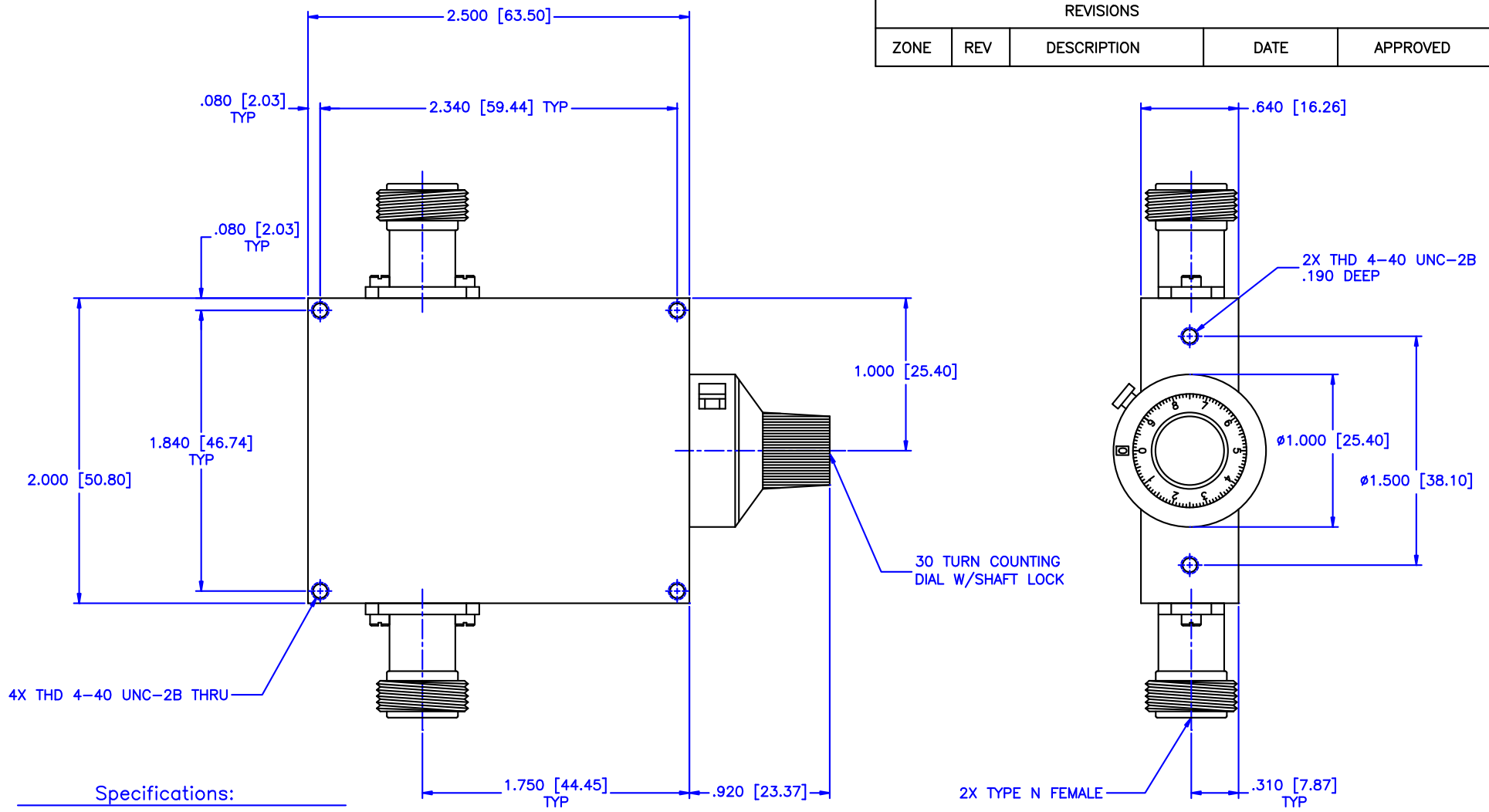


REVISIONS				
ZONE	REV	DESCRIPTION	DATE	APPROVED



**Specifications:**  
 Frequency Range: 6–11 GHz  
 Attenuation: 40dB  
 Insertion Loss: 0.5 Max.  
 VSWR: 1.50:1  
 RF Power: 7W Average, 3kW Peak

**Environmental:**  
 Temperature range: -55°C to +110°C  
 Shock: 15 G's, 11mS, 1/2 sine  
 Vibration: 3 G's overall  
 Altitude: 40,000 ft. Survival 25,000ft Operating

MATERIAL:		MICROWAVE COMMUNICATIONS LABORATORIES INC. 7255 30TH AVE. N. SAINT PETERSBURG, FL 33710 TEL: (727) 344-6254 FAX: (727) 381-6116 http://WWW.MCLI.COM		SCALE:	N/A
		UNLESS OTHERWISE SPECIFIED: TOLERANCES IN (INCHES) OR [mm] (MILLIMETERS) FRACTIONS: ± 1/64 DECIMALS: ±.01 ±.005 ANGLE: ±1/2°		DRAWING TITLE:	CONTINUOUSLY VARIABLE ATTENUATOR WITH DIAL
DRAWN: Paiboon Luekhamhan	DATE: 02-08-2011	PROPRIETARY NOTICE: THE INFORMATION IN THIS DRAWING IS PROPRIETARY AND SHALL NOT BE USED OR DISCLOSED WITHOUT WRITTEN PERMISSION FROM MICROWAVE COMMUNICATIONS LABORATORIES INC. (MCLI)		PART NO.:	CVA9-40/DNF
APPROVED: T. Nguyen	DATE: 02-08-2011	THIRD ANGLE PROJECTION 	CAGE CODE:	SIZE: A	REV: N/A
			0D2L5	DO NOT SCALE THE DRAWING	
					DWG NO. 85428