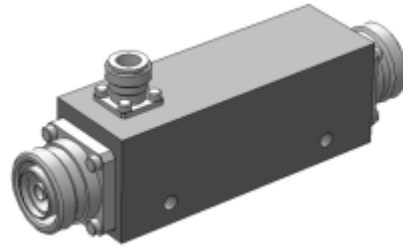


Directional Couplers, Low-Loss Stripline Coupler 800-2500MHZ, 20 & 30dB 7/16 Din, N Tap Off

KorinWell™

- Multiple-Band Frequency Range,
Cellular, PCS, UMTS
- 200Watt Average Main Line Power
- Minimal RF Insertion Loss
- High Reliability
- Low Passive Intermodulation (PIM)
- Environment IP65



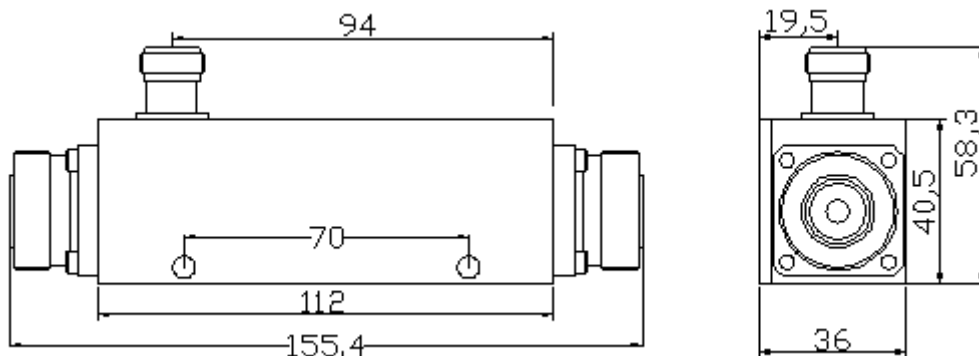
These Directional Couplers are used for indoor/outdoor applications covering all the wireless services from 800 to 2500MHz. Units couple off a defined fraction of signal with minimal reflections or loss. All of them are conformance to IP65 specification. Its mechanical shape allows to be fixed on the wall or the pole easily.

The ultra wide frequency range allows use with multi-band antennas and leaky cable systems and wireless base stations.

VSWR:	1.25:1 Max., All Ports
Isolation:	20dB Min.
Power Rating:	200W, avg.; 1.5KW peak
PIM, 3rd IMD :	-140dBc@2x43dBm
Impedance:	50 ohm, nominal
Temperature Range, C	-25° to +75°
Interface:	Input 7/16 Din Female Output 7/16 Din Female Coupling N Female
Environment:	IP65, RoHS compliant
Housing:	Passivated Aluminum or powder paint
Connectors:	Tri-plate
DC capability: DC transmission only between input and output	

PN.	Frequency Band, MHz	Coupling, dB	Mainline Loss dB Max.	Insertion Loss dB Max.	Reflected Power W Max.	Weight g
BXDC-20-DF-NF	800~2500	-20±1.0	0.22	0.20	200	750
BXDC-30-DF-NF	800~2500	-30±1.0	0.20	0.20	200	750

Dimensions, mm



All Specifications are subject to change without prior notice