



SMP Female Connector Solder Attachment For RG178, RG196

TECHNICAL DATA SHEET

PE44655

SMP Female Connector Solder Attachment For RG178, RG196

Configuration

| | |
|--|---------------|
| Connector | SMP Female |
| Connector Interface Type | RG178, RG196 |
| Cable Attachment Method (Shield/Contact) | Solder/Solder |
| Body Style | Straight |

Electrical Specifications

| | |
|---------------------------------------|---------|
| Frequency Range, GHz | DC to 3 |
| Impedance, Ohms | 50 |
| Maximum VSWR | 1.15:1 |
| Maximum Insertion Loss, dB | 0.21 |
| Dielectric Withstanding Voltage, Vrms | 500 |

Mechanical Specifications

Temperature

| | |
|------------------------|-------------|
| Operating Range, deg C | -55 to +165 |
|------------------------|-------------|

Size

| | |
|---------------------|--------------|
| Length, in [mm] | 0.25 [6.35] |
| Width/Dia., in [mm] | 0.135 [3.43] |
| Weight, lbs [g] | 0.002 [0.91] |

Connector

| | |
|-------------------------------|---|
| Type | SMP Female |
| Contact Material and Plating | Beryllium Copper, Gold |
| Contact Plating Specification | ASTM B 488, Type II, Code C, Class 1.27 |
| Body Material and Plating | Beryllium Copper, Gold |
| Body Plating Specification | ASTM B 488, Type II, Code C, Class 1.27 |
| Dielectric Type | PTFE |

Click the following link (or enter part number in "SEARCH" on website) to obtain additional part information including price, inventory and certifications: [SMP Female Connector Solder Attachment For RG178, RG196 PE44655](#)

The information contained in this document is accurate to the best of our knowledge and representative of the part described herein. It may be necessary to make modifications to the part and/or the documentation of the part, in order to implement improvements. Pasternack reserves the right to make such changes as required. Unless otherwise stated, all specifications are nominal.



SMP Female Connector Solder Attachment For RG178, RG196

TECHNICAL DATA SHEET

PE44655

Compliance Certifications (visit www.Pasternack.com for current document)

Plotted and Other Data

Notes:

Values at 25 °C, sea level

SMP Female Connector Solder Attachment For RG178, RG196 from Pasternack Enterprises has same day shipment for domestic and International orders. Our RF, microwave and fiber optic products maintain a 99% availability and are part of the broadest selection in the industry.

Click the following link (or enter part number in "SEARCH" on website) to obtain additional part information including price, inventory and certifications: [SMP Female Connector Solder Attachment For RG178, RG196 PE44655](http://www.pasternack.com/smp-female-standard-rg178-rg196-connector-pe44655-p.aspx)

URL: <http://www.pasternack.com/smp-female-standard-rg178-rg196-connector-pe44655-p.aspx>

The information contained in this document is accurate to the best of our knowledge and representative of the part described herein. It may be necessary to make modifications to the part and/or the documentation of the part, in order to implement improvements. Pasternack reserves the right to make such changes as required. Unless otherwise stated, all specifications are nominal.

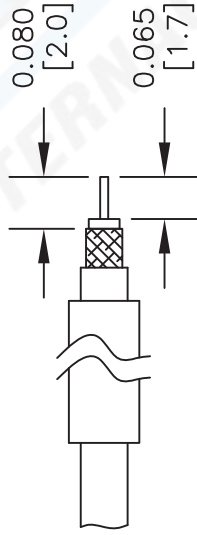


ASSEMBLY PROCEDURES

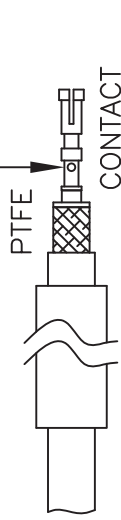
1. INSERT HEAT SHRINK TUBE ON CABLE, STRIP CABLE TO DIMENSION SHOWN. DIP END OF CABLE INTO FLUX AND THEN TIN BRAID.



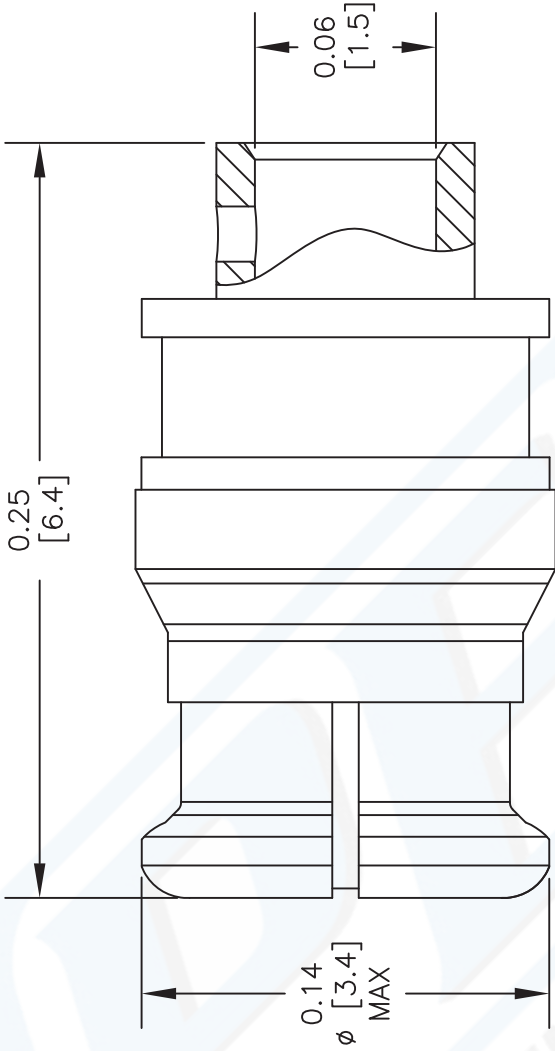
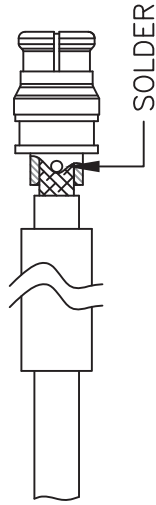
2. AFTER PRE TINNING TRIM TO DIMENSION SHOWN.



3. SOFT SOLDER CONTACT.



4. INSTALL CABLE INTO BODY AND SOLDER CABLE TO BODY AS SHOWN, SLIDE HEAT-SHRINK TUBE TOWARDS BODY SHOULDER AND SHRINK TO FIT.



Pasternack Enterprises, Inc.
P.O. Box 16759 | Irvine | CA | 92623
Phone: (949) 261-1920 | Fax: (949) 261-7451
Website: www.pasternack.com | E-Mail: sales@pasternack.com

DWG TITLE

PE44655

FSCM NO. 53919

NOTES:
1. UNLESS OTHERWISE SPECIFIED ALL DIMENSIONS ARE NOMINAL.
2. ALL SPECIFICATIONS ARE SUBJECT TO CHANGE WITHOUT NOTICE AT ANY TIME.
3. DIMENSIONS ARE IN INCHES [mm].
4. FITS MIL-C-17 AND EQUIVALENT CABLES.

CAD FILE 071013

SCALE N/A

SIZE A

2233