

SINGLE POLE DOUBLE THROW

MSPDT Failsafe



The M series Single Pole Double Throw (MSPDT) switch is used to switch a microwave signal from a common input to either of the two outputs. Latching and Failsafe switching modes are available.

M series SPDT switches with higher temperature range is for environments where additional shock, vibration, and humidity tolerance is required. Please visit EPX website or contact factory for details.

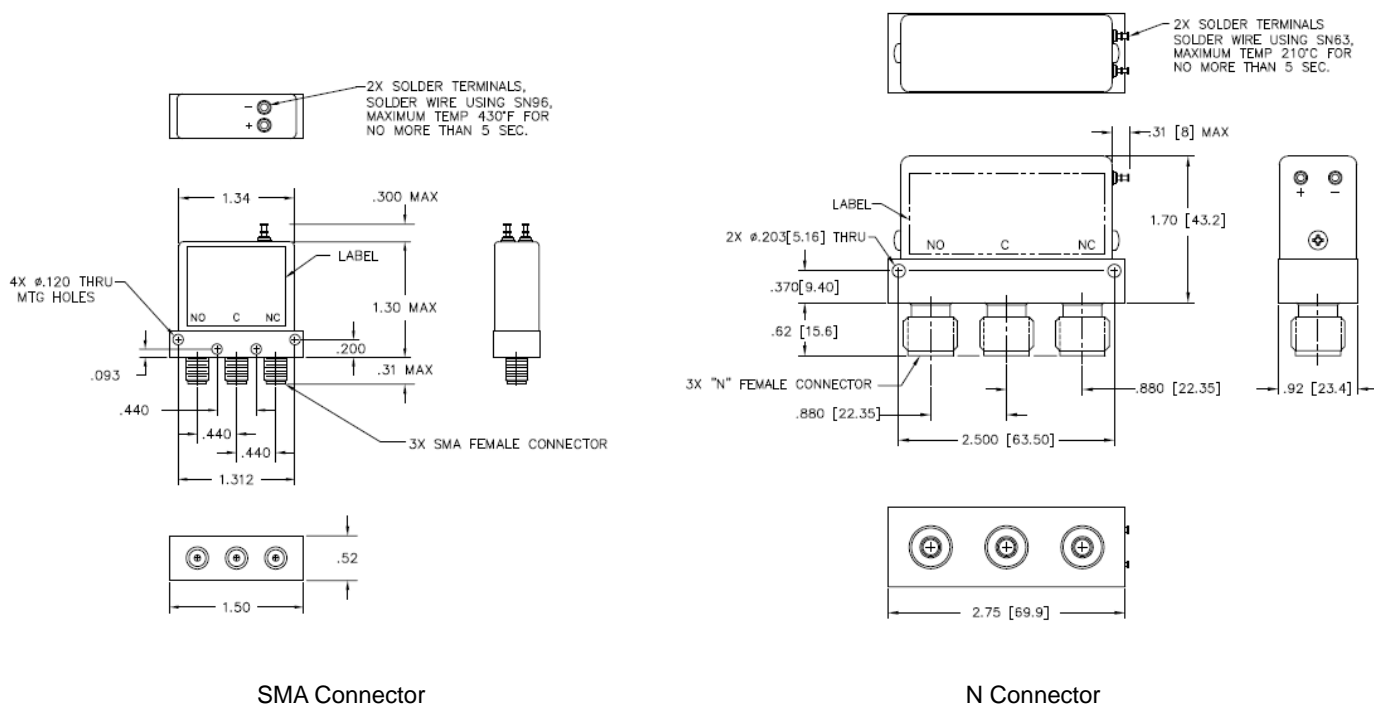
Other options include TTL control, indicator, internal termination, standard or narrow body width and choices of connectors, frequency range up to 26.5GHz. See Model Numbering System for all options.

Specifications

| | | | | |
|---------------------|-------------------|----------------|----------------|----------------|
| Actuator: | Failsafe | | | |
| Actuator Voltage: | 12 \pm 1 VDC | 15 \pm 1 VDC | 24 \pm 2 VDC | 28 \pm 2 VDC |
| Actuator Current *: | 200mA | 160mA | 110mA | 90mA |
| Switching Time: | 20ms (max) | | | |
| MTBF: | 7.0 Million Hours | | | |

* Note: Actuator Current stated is for SPDT, SMA, Failsafe without Indicator/TTL models only.

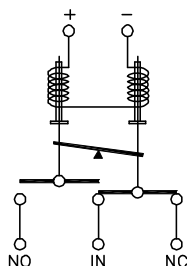
Outline



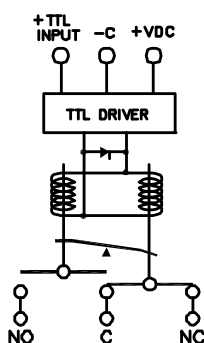
Schematic

MSPDT Failsafe Actuator

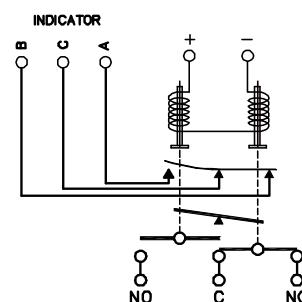
Standard



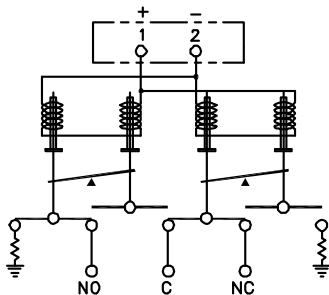
TTL



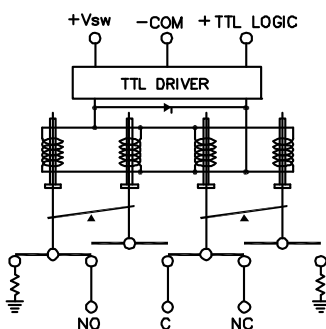
Indicator



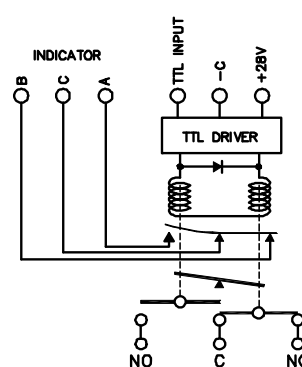
Internal Termination



TTL + Internal Termination



Indicator + TTL



Model Numbering System

Example: **MSPDT-0A-18A-D-S9**

MSPDT - 0 A - 18 A - D - S9

TYPE

MSPDT

CONNECTOR

0: SMA 4: F
1: N 5: NC
2: TNC 6: CUSTOM
3: RF PIN

ACTUATOR TYPE

A: Failsafe without Indicator
B: Failsafe with Indicator

FREQUENCY RANGE

18: DC-18GHz
22: DC-22GHz
26: DC-26.5GHz

CONTROL OPTIONS

Default (Not specified): Pin Terminal Control
S9: 9Pins D-Sub Control
S15: 15Pins D-Sub Control

OPTIONS

C: Custom
D: TTL with Suppression Diode
N: Narrow Body
T: Internal Terminations
- SMA models only

ACTUATOR VOLTAGE

A: 12VDC D: 24VDC
B: 15VDC E: 20VDC
C: 28VDC F: 5VDC