

Coaxial High Pass Filter

ZX75HP-260+

50Ω 300 to 2200 MHz

The Big Deal

- Low insertion loss
- High rejection
- Connectorized package



CASE STYLE: KE1467

Product Overview

ZX75HP-260+ is a High pass filter in a rugged connectorized package covering 300 to 2200 MHz. This filter will find its application in TV Broadcast, point-to-point military radio and cordless telephones. It has repeatable performance across production lots and consistent performance across temperature.

Key Features

Feature	Advantages
Low insertion loss	Can be used in high performance applications.
Good rejection	This enables the filter to attenuate spurious signals and reject harmonics for broad band frequency.
Connectorized package	The connectorized package is easy to interface with other devices and well suited for test setups.

Notes

- A. Performance and quality attributes and conditions not expressly stated in this specification document are intended to be excluded and do not form a part of this specification document.
B. Electrical specifications and performance data contained in this specification document are based on Mini-Circuit's applicable established test performance criteria and measurement instructions.
C. The parts covered by this specification document are subject to Mini-Circuits standard limited warranty and terms and conditions (collectively, "Standard Terms"); Purchasers of this part are entitled to the rights and benefits contained therein. For a full statement of the Standard Terms and the exclusive rights and remedies thereunder, please visit Mini-Circuits' website at www.minicircuits.com/MCLStore/terms.jsp



Coaxial High Pass Filter

50Ω 300 to 2200 MHz

ZX75HP-260+



CASE STYLE: KE1467

Connectors	Model
SMA-MF	ZX75HP-260-S+

Features

- Wide band, 300 MHz to 2200 MHz
- High rejection
- Connectorized package

Applications

- TV Broadcast
- Point-to-point military radio
- Cordless telephones

Electrical Specifications at 25°C

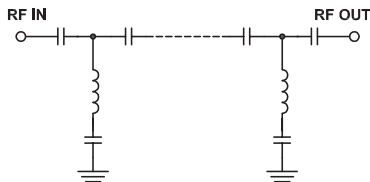
Parameter		F#	Frequency (MHz)	Min.	Typ.	Max.	Unit
Stop Band	Rejection Loss	DC-F1	DC-184	20	30	-	dB
	VSWR	DC-F1	DC-184	-	86	-	:1
Pass Band	Insertion Loss	F2-F3	300-2200	-	0.7	1.5	dB
	VSWR	F2-F3	300-2200	-	1.4	-	:1

Maximum Ratings

Operating Temperature	-40°C to 85°C
Storage Temperature	-55°C to 100°C
RF Power Input	0.5 W.

Permanent damage may occur if any of these limits are exceeded.

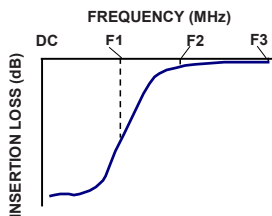
Functional Schematic



Typical Performance Data at 25°C

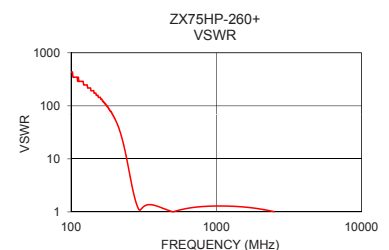
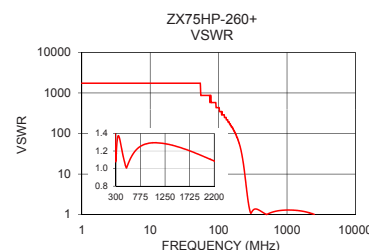
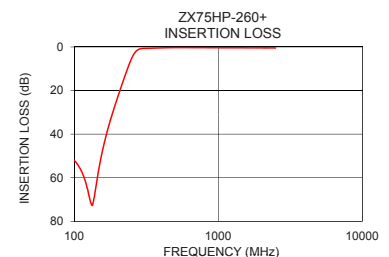
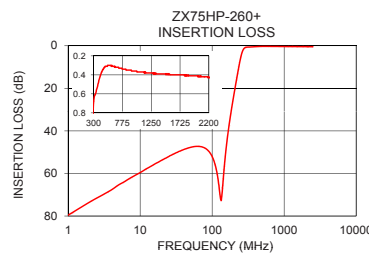
Frequency (MHz)	Insertion Loss (dB)	VSWR (:1)
1	79.60	1737.18
9	60.44	1737.18
109	55.44	347.44
136	70.81	217.15
168	39.65	115.81
184	30.60	82.73
218	15.88	31.60
242	7.56	9.69
260	3.21	3.52
272	1.66	2.01
300	0.68	1.09
350	0.55	1.37
415	0.40	1.21
490	0.31	1.03
740	0.33	1.24
1165	0.38	1.29
1825	0.41	1.18
2020	0.42	1.13
2070	0.41	1.12
2200	0.42	1.09

Typical Frequency Response



+RoHS Compliant

The +Suffix identifies RoHS Compliance. See our web site for RoHS Compliance methodologies and qualifications



Notes

- A. Performance and quality attributes and conditions not expressly stated in this specification document are intended to be excluded and do not form a part of this specification document.
B. Electrical specifications and performance data contained in this specification document are based on Mini-Circuit's applicable established test performance criteria and measurement instructions.
C. The parts covered by this specification document are subject to Mini-Circuits standard limited warranty and terms and conditions (collectively, "Standard Terms"); Purchasers of this part are entitled to the rights and benefits contained therein. For a full statement of the Standard Terms and the exclusive rights and remedies thereunder, please visit Mini-Circuits' website at www.minicircuits.com/MCLStore/terms.jsp



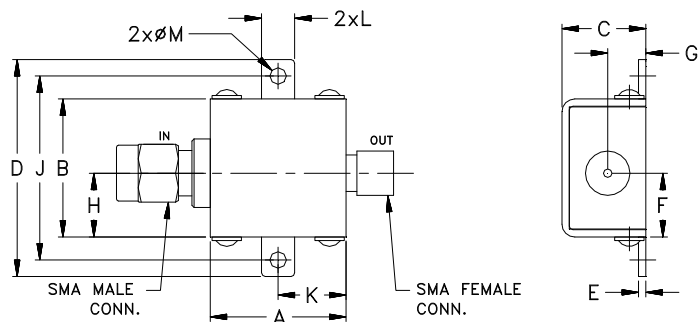
www.minicircuits.com P.O. Box 350166, Brooklyn, NY 11235-0003 (718) 934-4500 sales@minicircuits.com

REV.A
M151121
ZX75HP-260+
EDU1696
URJ
150514
Page 2 of 3

Coaxial Connections

INPUT	SMA-Male
OUTPUT	SMA-Female

Outline Drawing



Outline Dimensions (^{Inch}/_{mm})

A	B	C	D	E	F	G
0.74	.75	.46	1.18	.04	.349	.21
18.80	19.05	11.68	29.97	1.02	8.86	5.33
H	J	K	L	M	wt	
.349	1.00	.37	.18	.09	grams	
8.86	25.40	9.40	4.57	2.29	24.4	

Notes

A. Performance and quality attributes and conditions not expressly stated in this specification document are intended to be excluded and do not form a part of this specification document.

B. Electrical specifications and performance data contained in this specification document are based on Mini-Circuit's applicable established test performance criteria and measurement instructions.

C. The parts covered by this specification document are subject to Mini-Circuits standard limited warranty and terms and conditions (collectively, "Standard Terms"); Purchasers of this part are entitled to the rights and benefits contained therein. For a full statement of the Standard Terms and the exclusive rights and remedies thereunder, please visit Mini-Circuits' website at www.minicircuits.com/MCLStore/terms.jsp