

SPEC SHEET

MW500-1405

1480 MHz to 1500 MHz

VOLTAGE CONTROLLED OSCILLATORS



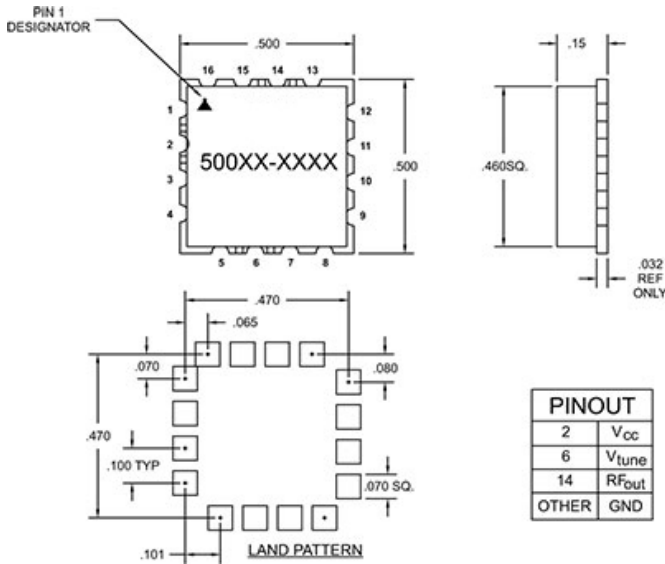
Specifications

| | |
|----------------------|---|
| Frequency | 1480 MHz to 1500 MHz |
| Tuning Voltage | 0.5/2.8 V |
| Power Output | 0 +/- 2 dBm |
| Phase Noise | 10 kHz Offset -105 (typ) dBc/Hz 100 kHz Offset -126 (typ) dBc/Hz |
| Frequency Pushing | 1 MHz/V |
| Frequency Pulling | 3 MHz |
| Harmonic Suppression | -20 (MAX) |

Operating Specifications

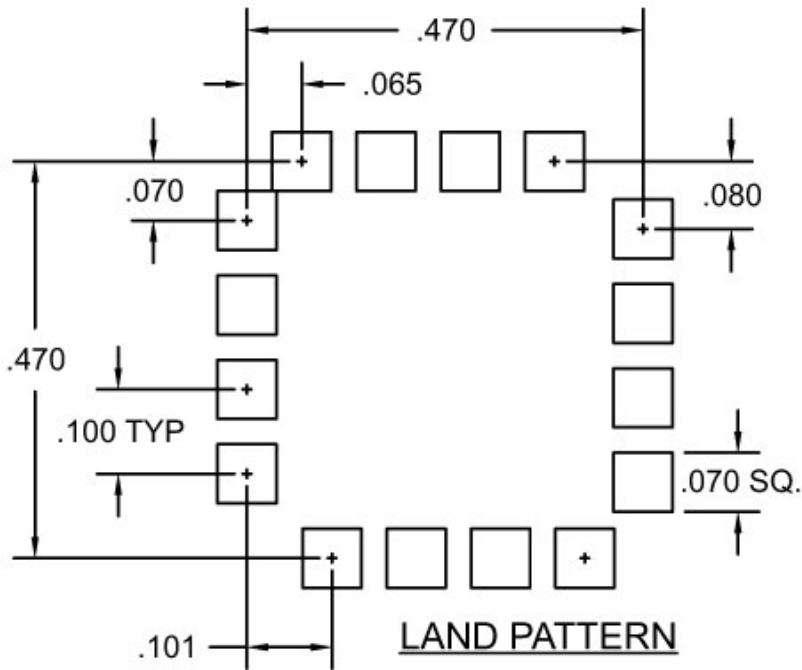
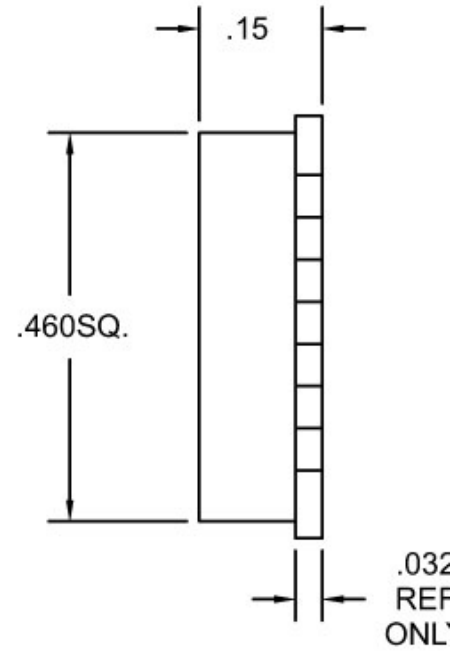
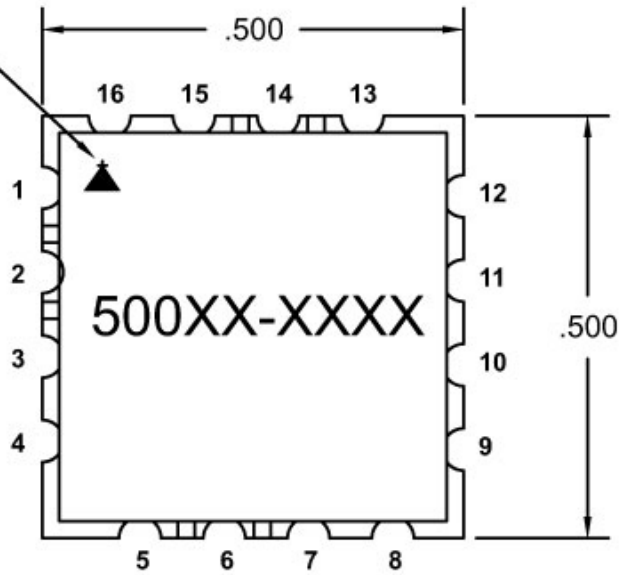
| | |
|-----------------------|--------------|
| Supply Voltage | 3 Vcc |
| Supply Current | 20 mA |
| Load Impedance | 50 |
| Operating Temperature | -40 to 85 °C |

Notes



MERCURY COMMERCIAL ELECTRONICS

PIN 1
DESIGNATOR



| PINOUT | |
|--------|-------------------|
| 2 | V _{cc} |
| 6 | V _{tune} |
| 14 | R _{Fout} |
| OTHER | GND |