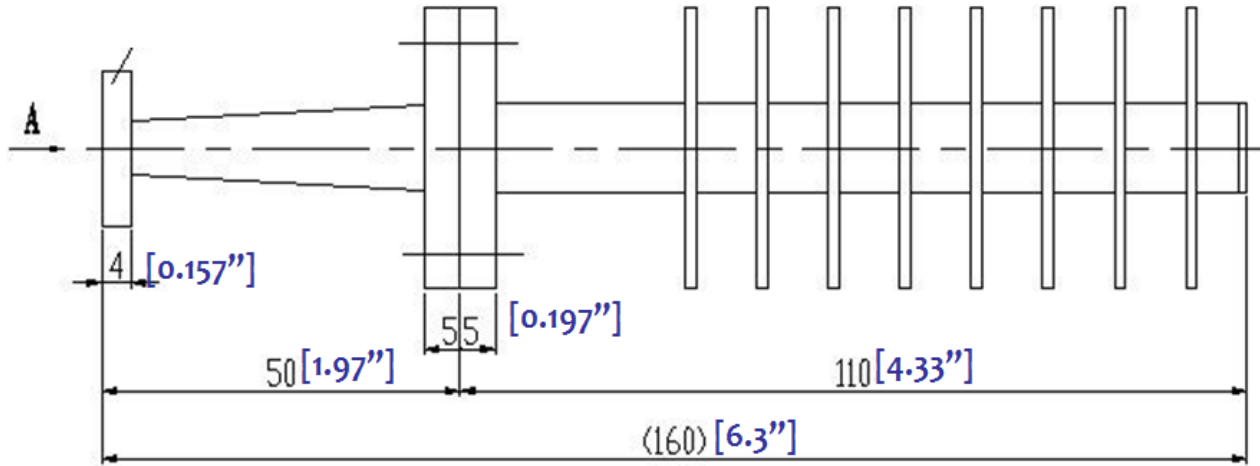
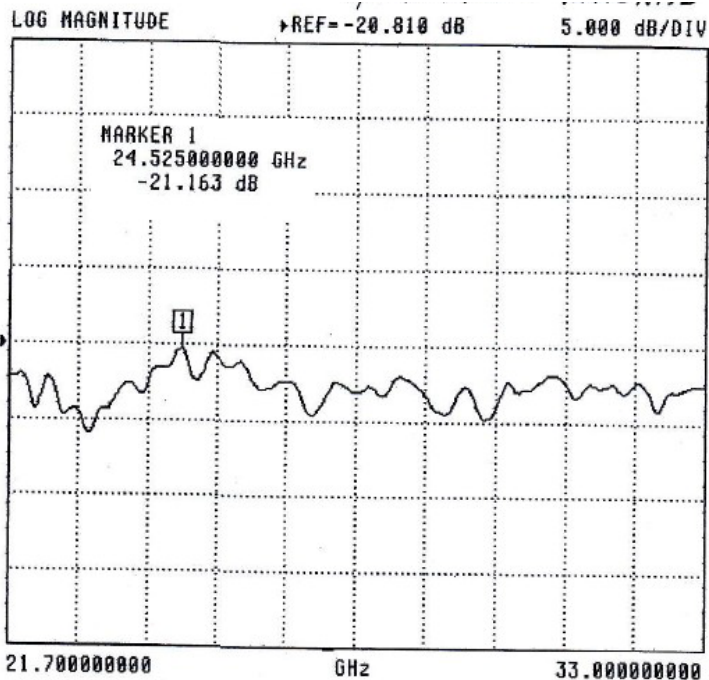


WR34 WAVEGUIDE 100W HIGH POWER TERMINATION- RFWT34A




1.0	Mechanical Specifications	
1.1	Waveguide type	Rectangular Waveguide WR34
1.2	Flange type	CPRF, COVER
1.3	Flange Holes	Through
1.4	Basis-material	Alloyed Cuprum
1.5	Internal Body Finish	Silver Plated chromate or conversion
1.6	External Body Finish	Body painted with gray/black epoxy enamel



2.0	Environment specifications	
2.1	Operation Temp.	-40°C~+85°C
2.2	Storage Temp.	-50°C~+125°C
2.3	Altitude	45000 ft
2.4	Vibration	10g rms (15 degree 2KHz)
2.5	Humidity	100% RH at 35c, 95%RH at 40 deg c
2.6	Shock	20G for 11msc

3.0	Electrical Specifications	
3.1	Frequency Range	22~33GHz
3.2	Average Power	100W (CW)
3.3	VSWR	1.10:1 (max)

PAGE 1 OF 1		DATE Jun 21 st 2006
<small>PROPRIETARY INFORMATION THE INFORMATION CONTAINED IN THIS DOCUMENT IS THE PROPERTY OF RF-LAMBDA EXCEPT AS SPECIFICALLY AUTHORIZED IN WRFLW34C BT RF-LAMBDA. THE HOLDER OF THIS DOCUMENT SHALL KEEP ALL INFORMATION CONTAINED HEREIN CONFIDENTIAL AND SHALL PROTECT SAME IN THE WHOLE OR IN PART FROM DISCLOSURE AND DISSEMINATION OF ALL THIRD PARTIES AND SHALL USE SAME FOR OPERATING AND MAINTENANCE PURPOSES ONLY.</small>		DESIGN RFPC
 RFWT34A WAVEGUIDE TERMINATION		RF-LAMBDA RFPC
www.rflambda.com		CAD MODEL REVISION 11
RF-LAMBDA		ASSEMBLY REVISION V55DS
SIZE LT	SHEETS 1 OF 1	ASSEMBLY NAME RFLVRO5
		DRAWING NUMBER D05-1