

TERMINATIONS 7/16 - DIN

UP TO 7.5 GHz
50 WATTS

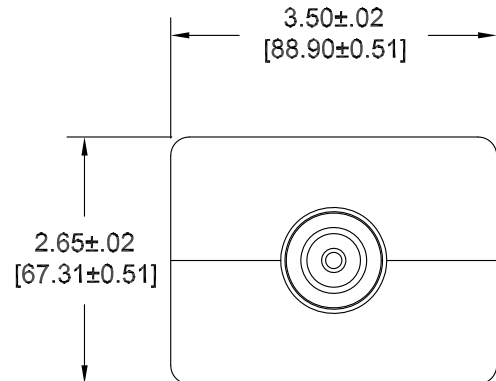
api
technologies corp.
> INMET

MODELS: TDXXXM-50W, TDXXXF-50W

SPECIFICATIONS:

Electrical:

Frequency Range _____ DC - 7.5 GHz
Standard Freq. Values _____ 2.5, 4 & 7.5 GHz
VSWR _____
DC - 4 GHz _____ 1.25:1 Max.
4 - 7.5 GHz _____ 1.45:1 Max.
Impedance _____ 50 Ohms
Input Power _____ 50 Watts Avg. @ +25°C
Derated Linearly to 10 Watts @ +125°C
Peak Power _____ 500 Watts Max.
(5uSec Pulse, .05% Duty Cycle)
Operating Temp Range _____ -65°C to +125°C



END VIEW
TYPICAL

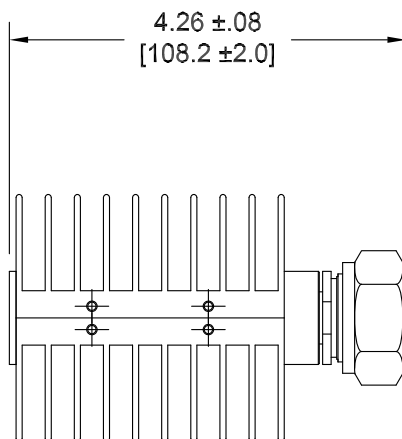
Mechanical:

7/16 DIN Connectors _____ Silver or White Bronze
Mates with DIN 47 223 _____ Plated Brass
Conductors _____ Silver or White Bronze
Plated Beryllium Copper
Housing _____ Anodized Aluminum

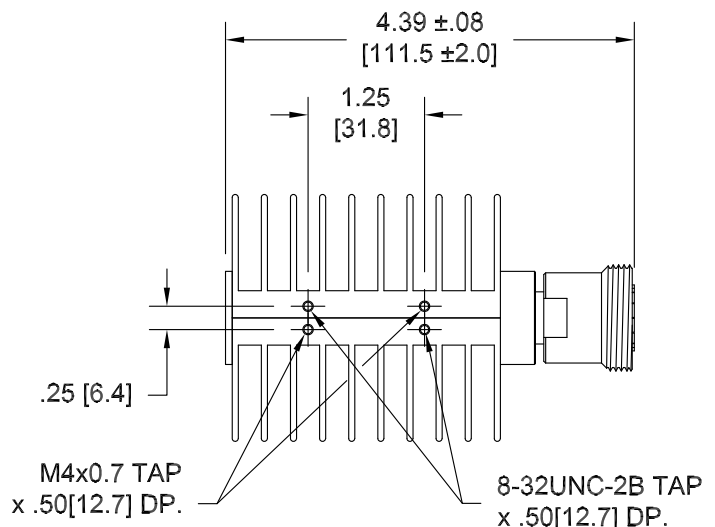
Units must be Mounted in such a way
as to Allow for Free Air Flow Around
fins as to Assure Performance.

Model Number: **TDXXXM-50W**
7/16 - DIN Male Connector

Model Number: **TDXXXF-50W**
7/16 - DIN Female Connector



NOTE: Hole Pattern typical for both
Male & Female units



HOW TO ORDER:

Model Number: **TDXXXY-50W**

Connector Config.
F = Female
M = Male
Freq. Range _____
020 = DC - 2.5 GHz
040 = DC - 4 GHz
075 = DC - 7.5 GHz

Ordering Examples:

Model Number: **TD020M-50W**
DC - 2.5 GHz, 7/16-DIN Male Conn

Model Number: **TD075F-50W**
DC - 7.5 GHz, 7/16-DIN Female Conn.

Note: Dimensions in Brackets are Expressed in Millimeters and are for Reference Only.
Design specifications are subject to change without notice.
Contact factory for technical specifications before purchasing or use.