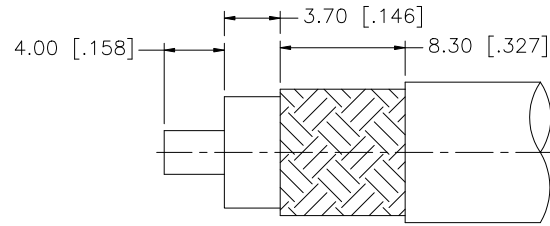
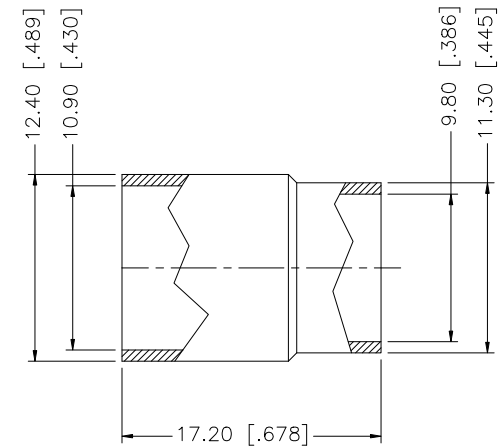
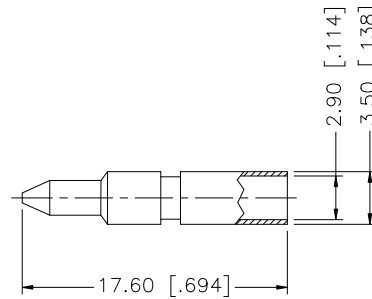
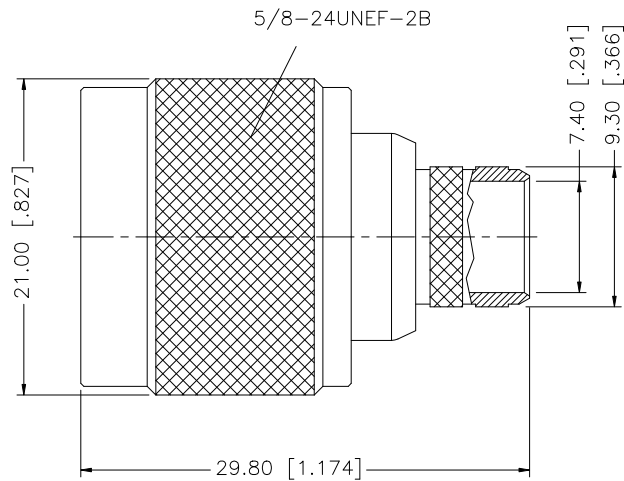


REV.	DATE	ECR NO.	DESCRIPTION
NC	06/01/99	-	INITIAL RELEASE
A	02/18/09	100082	UPDATE DRAWING FORMAT



RECOMMENDED
CABLE STRIPPING DIM'S



NOTES:

1. CRIMPED FERRULE HEX CRIMP SIZE .429" [10.90].
2. CRIMPED CONTACT PIN HEX CRIMP SIZE .118" [3.00]

DESCRIPTION	MATERIAL	FINISH	QTY	
8				
7				
6				
5				
4	FERRULE	BRASS	NICKEL	1
3	CONTACT PIN	BRASS	GOLD	1
2	INSULATOR	PTFE	NATURAL	1
1	BODY	BRASS	NICKEL	1

UNLESS OTHERWISE SPECIFIED DIMENSIONS ARE IN MILLIMETERS. DIMENSIONS IN [] ARE IN INCHES AND FOR CUSTOMER REFERENCE ONLY.

UNLESS OTHERWISE SPECIFIED TOLERANCES FOR MILLIMETERS ARE:
0.5 - 8mm ± 0.20mm
8 - 30mm ± 0.40mm
30 - 120mm ± 0.50mm

UNLESS OTHERWISE SPECIFIED TOLERANCES FOR INCHES ARE:
.020 - .315 = ± 0.007"
.315 - 1.180 = ± 0.015"
1.180 - 4.724 = ± 0.020"

DO NOT SCALE DRAWING

APPROVALS	DATE
DRAWN GRS	02/18/09
CHECKED	
ISSUED	
SHEET 1 OF 1	
CAD FILE	C:/172/172249.DWG

Amphenol Connex

PART DESCRIPTION

N CRIMP PLUG
(FOR BELDEN 89913 PLENUM CABLE)

PART NO.

172249

DWG. NO.

172249.DWG

REV. A

SIZE A

SCALE NA