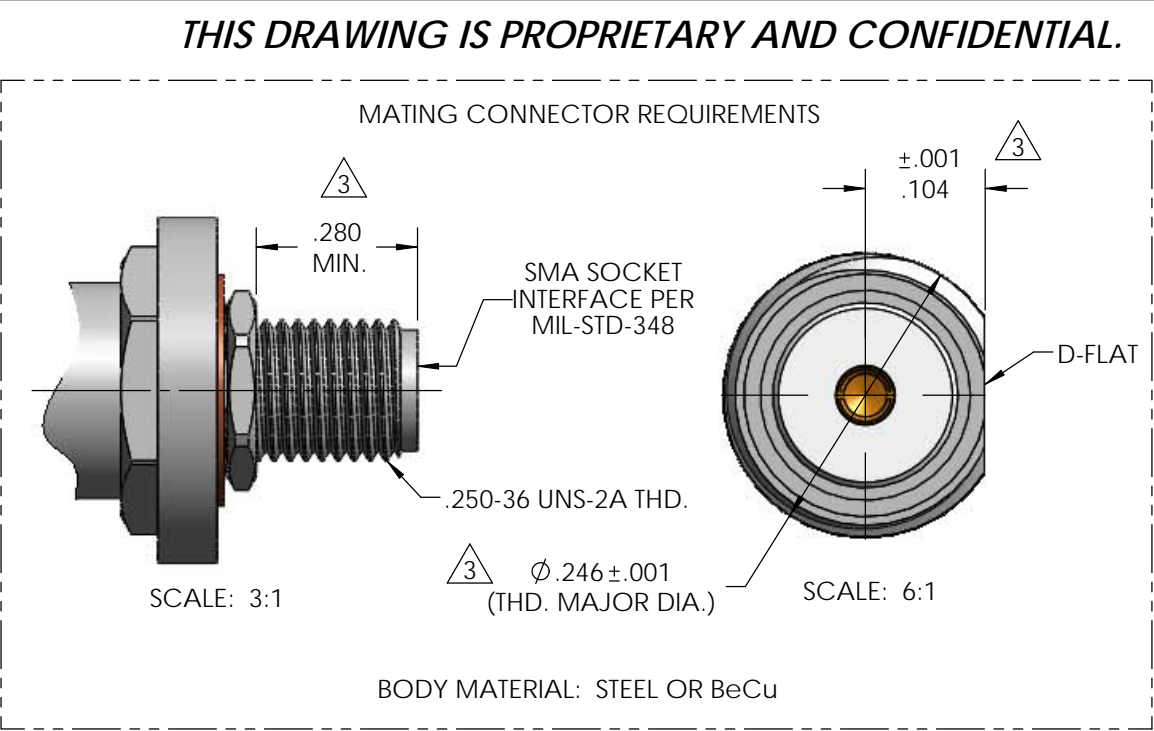
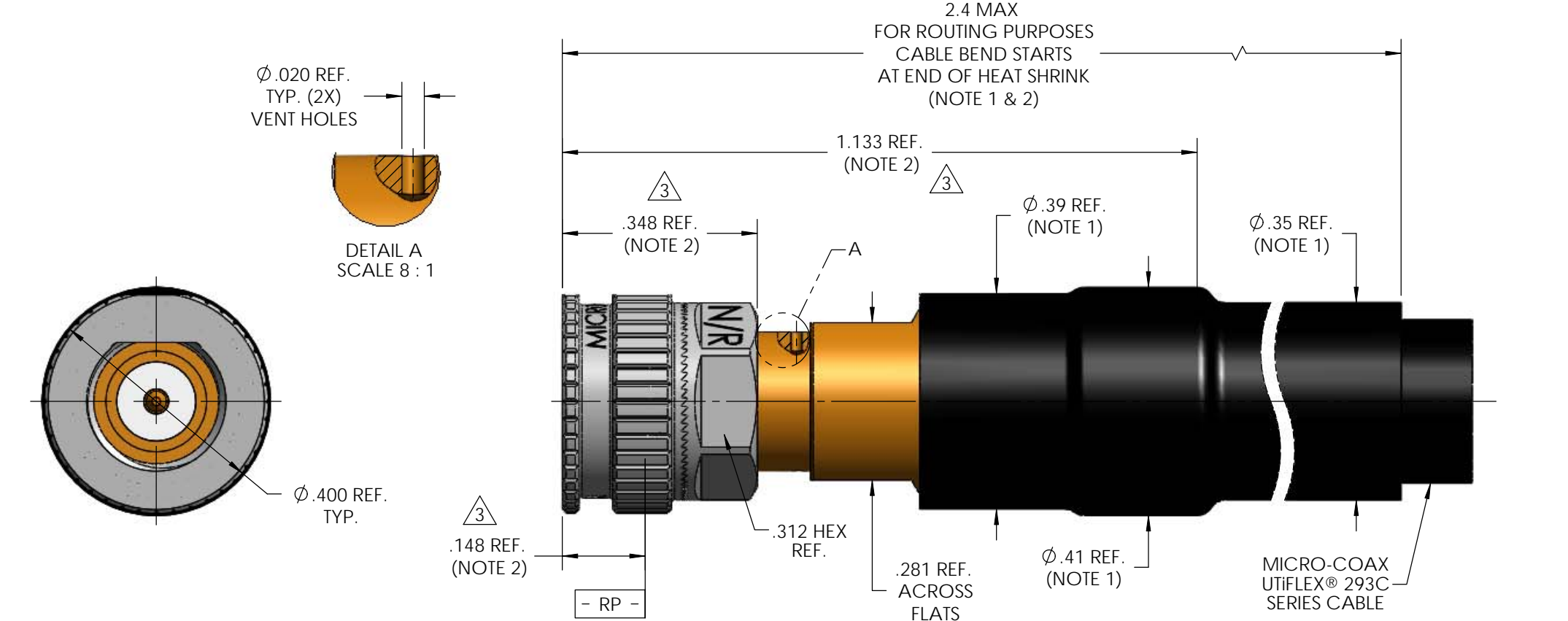


MECHANICAL CHARACTERISTICS	
INTERFACE	MIL-STD-348, FIGURE 310-1
IN ACCORDANCE WITH THE INTENT OF SLANT SHEET	MIL-PRF-39012/55 REF.
RECOMMENDED MATING TORQUE	9 IN-LBS. NOM.
COUPLING PROOF TORQUE	15 IN-LBS. MIN.
COUPLING NUT RETENTION	60 LBS. MIN.
FORCE TO ENGAGE	2 IN-LBS. MAX.
FORCE TO DISENGAGE	2 IN-LBS. MIN.
DURABILITY	500 CYCLES MIN.
AXIAL CONTACT RETENTION (FROM INTERFACE)	6 LBS. MIN.
AXIAL CONTACT RETENTION (FROM CABLE)	6 LBS. MIN.
CABLE RETENTION	20 LBS.
MASS	5.88 GRAMS NOM.
ELECTRICAL CHARACTERISTICS	
IMPEDANCE	50 Ohms NOM.
MAXIMUM FREQUENCY	18 GHz
VSWR DC - 8 GHz	1.15:1 MAX.
8 - 15 GHz	1.20:1 MAX.
15 - 18 GHz	1.25:1 MAX.
INSERTION LOSS	0.03 \sqrt{f} (GHz) dB MAX.
DIELECTRIC WITHSTANDING VOLTAGE	1500 Vrms MIN.
INSULATION RESISTANCE	5000 MegaOhms MIN.
RF LEAKAGE DC - 18 GHz	-90 dB MIN.
CORONA	375 Vrms MIN. @ 70,000 FEET
RF HIGH POTENTIAL	1000 Vrms MIN.
CONTACT RESISTANCE (INNER)	4.0 MilliOhms MAX.
CONTACT RESISTANCE (OUTER)	2.0 MilliOhms MAX.
ENVIRONMENTAL CHARACTERISTICS	
OPERATING TEMPERATURE	-100 °C TO 150 °C
VIBRATION	MIL-STD-202, METHOD 204, CONDITION D
MECHANICAL SHOCK	MIL-STD-202, METHOD 213, CONDITION I
THERMAL SHOCK	MIL-STD-202, METHOD 107, CONDITION B
CORROSION	MIL-STD-202, METHOD 101, CONDITION B, 5%
MATERIALS AND FINISH	
COUPLING NUT, LOCKING SLEEVE	STEEL, CORROSION RESISTANT, ASTM-A-582, UNS NO. S30300, PASSIVATED PER ASTM-A-967
BODY, CONTACT	BERYLLIUM COPPER, ASTM-B-196, GOLD PLATED PER MIL-DTL-45204, OVER NICKEL PLATE PER AMS-QQ-N-290
SNAP RING	BERYLLIUM COPPER, PER ASTM-B-197
INSULATOR, DIELECTRIC STOP	TFE FLUOROCARBON PER ASTM-D-1710
DIELECTRIC BEAD	POLYETHERMIDE THERMOPLASTIC, PER ASTM-D-5205
SPRING	316BRT STAINLESS STEEL, PASSIVATED PER ASTM-B-967
APPLICATION	
CABLE(S)	293C SERIES CABLE
INSTALLATION	PER CONFIGURATOR



REV	DESCRIPTION	DATE	BY	APPVD	CHKD
1	PRELIMINARY RELEASE, RDCR 117011	5/29/2012	PLM	RS	CCF
2	ADDED RED STRIPE SPECIFICATION ON COUPLING NUT	9/4/2012	PLM	RS	RS
3	REVISED SMA BHJ BODY DIMENSIONAL REQUIREMENTS; REVISED LOCKING SLEEVE, REMOVED RED STRIPE	6/3/2013	PLM	RS	RS



NOTE:

- MARKER LOCATION ON THIS DRAWING IS FOR REFERENCE ONLY AND IS SUBJECT TO CHANGE WITHOUT NOTICE.
- DIMENSION VALUE BASED ON SLEEVE IN LOCKED POSITION.

THIS SPECIFICATION IS THE PROPERTY OF MICRO-COAX, INC. AND MAY NOT BE USED OR COPIED WITHOUT THE EXPRESS WRITTEN PERMISSION OF MICRO-COAX, INC.		INITIALS		DATE		<div>MICRO-COAX®</div> <div>Leading the way in transmission line solutions.</div> <div>Copyright Micro-Coax, Inc.</div>											
		DWN.	PLM	05/21/12													
		CHKD.	CCF	05/21/12													
		APPVD.															
TOLERANCES UNLESS OTHERWISE SPECIFIED		TITLE															
.XX ± .02		SMA PLUG, SELF-LOCKING, NON-REMOVABLE SLEEVE, LIGHTWEIGHT, VENT HOLES, 293C, SPACE GRADE															
.XXX ± .005		ALL DIMENSIONS IN INCHES UNLESS OTHERWISE SPECIFIED. SCREW THDS. TO BE IN ACCORD WITH ANSI B1.1-1989.				FSCM NO. 64639		SIZE B		SCALE 4:1		SHEET NO. 1 OF 1		DRAWING NO. SD905188		REV 3	
.XXXX ± .0010																	
ANGLES ±2°																	