

# ADAPTERS, BETWEEN SERIES SMA / GPO™ or SMP

## DC - 18 GHz



MODELS: 5190XX, 5191XX, 5192X, 5193X

### SPECIFICATIONS:

#### Electrical:

Frequency Range \_\_\_\_\_ DC – 18.0 GHz  
 VSWR \_\_\_\_\_ 1.20:1 Max.  
 Impedance \_\_\_\_\_ 50 Ohms  
 Operating Temp Range \_\_\_\_\_ -65°C to +125°C

#### Mechanical:

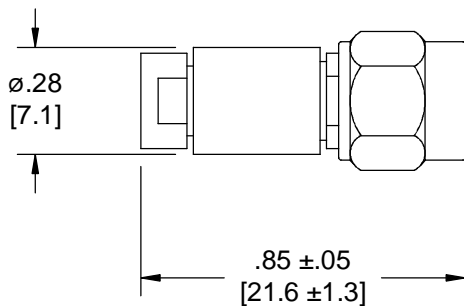
SMA Connectors \_\_\_\_\_ Passivated Stainless Steel  
 (Mates with MIL-STD-348)

GPO™/SMP Connectors \_\_\_\_\_ Gold Plated Beryllium Copper  
 (GPO Connectors Mate with SMP connectors IAW MIL-STD-348)

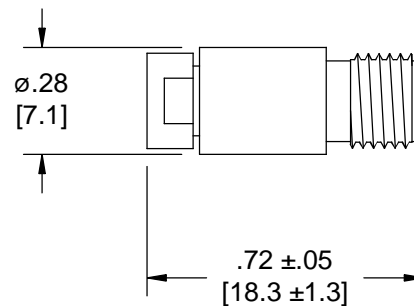
Conductors \_\_\_\_\_ Gold Plated Beryllium Copper

GPO is a trademark of Corning Gilbert Inc.

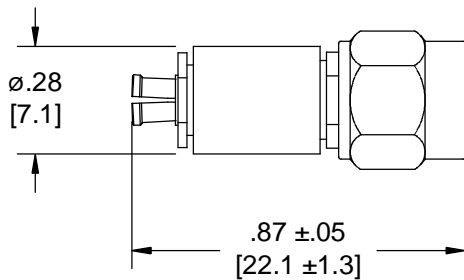
Model Number: **5190XX**  
 GPO™/SMP Male to SMA Male



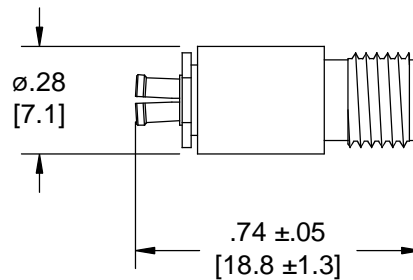
Model Number: **5191XX**  
 GPO™/SMP Male to SMA Female



Model Number: **5192X**  
 GPO™/SMP Female to SMA Male



Model Number: **5193X**  
 GPO™/SMP Female to SMA Female



### HOW TO ORDER:

Model Number: **519XYZ**

Base Number \_\_\_\_\_  
 As Shown Above

Connector Type \_\_\_\_\_  
 G = GPO™ Connectors  
 P = SMP Connectors

Connector Style \_\_\_\_\_  
 = Full Detent Male Interface  
 Force to Engage: 15.0 Lbs Max.  
 L = Limited Detent Male Interface  
 Force to Engage: 5.0 Lbs Max.

### Ordering Examples:

Model Number: **5190G**  
 GPO™ Male/SMA Male  
 GPO™ Male has Full Detent Interface

Model Number: **5191PL**  
 SMP Male/SMA Female  
 SMP Male has Limited Detent Interface

Model Number: **5193P**  
 SMP Female/SMA Female

Note: Dimensions in Brackets are Expressed in Millimeters and are for Reference Only.

Design specifications are subject to change without notice.

Contact factory for technical specifications before purchasing or use.

5190; REV D