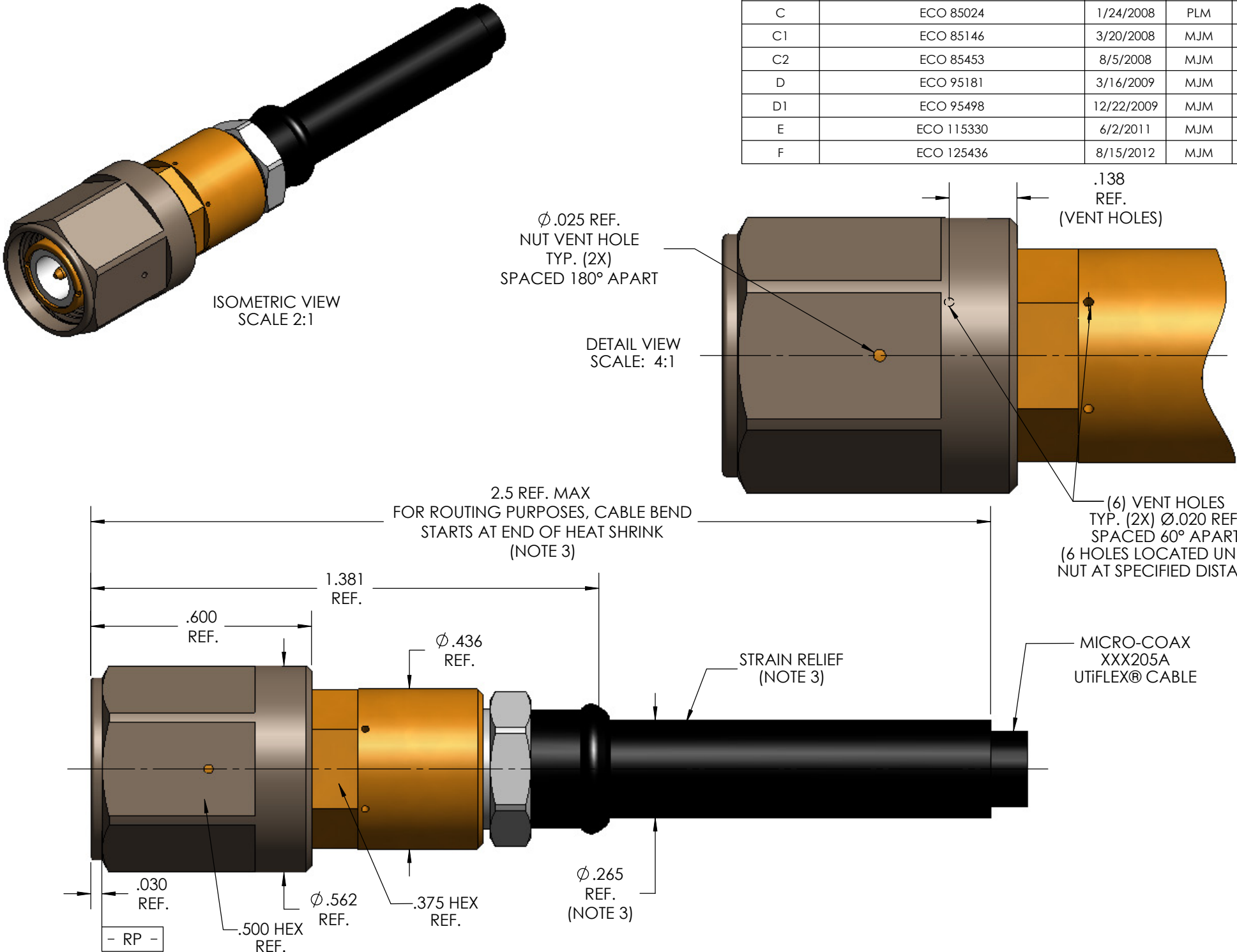


MECHANICAL CHARACTERISTICS	
INTERFACE	MIL-STD-348, FIGURE 313.1 (SEE NOTE 4)
IN ACCORDANCE WITH THE INTENT OF SLANT SHEET	MIL-PRF-39012/26 REF.
RECOMMENDED MATING TORQUE	15 IN-LBS. NOM.
COUPLING PROOF TORQUE	25 IN-LBS. MIN.
COUPLING NUT RETENTION	100 LBS. MIN.
FORCE TO ENGAGE	2 IN-LBS. MAX.
FORCE TO DISENGAGE	2 IN-LBS. MAX.
DURABILITY	500 CYCLES MIN.
AXIAL CONTACT RETENTION (FROM INTERFACE)	6 LBS. MIN. (BOTH DIRECTIONS)
CABLE RETENTION	20 LBS. MIN.
MASS	14.15 GRAMS NOM.
ELECTRICAL CHARACTERISTICS	
IMPEDANCE	50 Ohms NOM.
MAXIMUM FREQUENCY	15.0 GHz
VSWR DC - 15.0 GHz	1.15:1MAX.
INSERTION LOSS	0.045 √F (GHz) dB MAX.
DIELECTRIC WITHSTANDING VOLTAGE	1500 Vrms MIN.
INSULATION RESISTANCE	5000 MegaOhms MIN.
RF LEAKAGE DC - 9 GHz	-90 dB
9 GHz - 15 GHz	TBD
CORONA	375 Vrms MIN. @ 70,000 FEET
RF HIGH POTENTIAL	1000 Vrms MAX.
CONTACT RESISTANCE (INNER)	1.5 MilliOhms MAX.
CONTACT RESISTANCE (OUTER)	0.2 MilliOhms MAX.
ENVIRONMENTAL CHARACTERISTICS	
OPERATING TEMPERATURE	-100 °C TO 150 °C
VIBRATION	MIL-STD-202, METHOD 204, CONDITION B
MECHANICAL SHOCK	MIL-STD-202, METHOD 213, CONDITION I
THERMAL SHOCK	MIL-STD-202, METHOD 107, CONDITION B
CORROSION	MIL-STD-202, METHOD 101, CONDITION B, 5%
MATERIALS AND FINISH	
BODY, BUSHING	BERYLLIUM COPPER, PER ASTM-B-196, GOLD PLATE PER ASTM-B488, OVER COPPER PLATE PER ASTM-B734.
COUPLING NUT	ALUMINUM ALLOY, PER ASTM-B-221, HARD COAT ANODIZE PER MIL-A-8625(STANDARD GRAY/BLACK COLOR)
SNAP RING	BERYLLIUM COPPER, UNS NO. C17200, PER ASTM-B-197
CLAMP NUT	STEEL, CORROSION RESISTANT, PER ASTM-A-582, UNS NO. S30300, PASSIVATE PER ASTM-A-967
CONTACT RING, CONTACT	BERYLLIUM COPPER, PER ASTM-B-196, GOLD PLATE PER MIL-DTL-45204, OVER NICKEL PLATE PER AMS-QQ-N-290.
DIELECTRIC STOP(S)	TFE FLUOROCARBON PER ASTM-D-1710
DIELECTRIC STOP(S), WASHER	POLYIMIDE, PER MIL-R-46198, (TYPE 1)
APPLICATION	
CABLE(S)	XXX205A
INSTALLATION	PER CONFIGURATOR
CONNECTOR CODE SHEET 1	AQR
CONNECTOR CODE SHEET 2	AQR

THIS DRAWING IS PROPRIETARY AND CONFIDENTIAL.



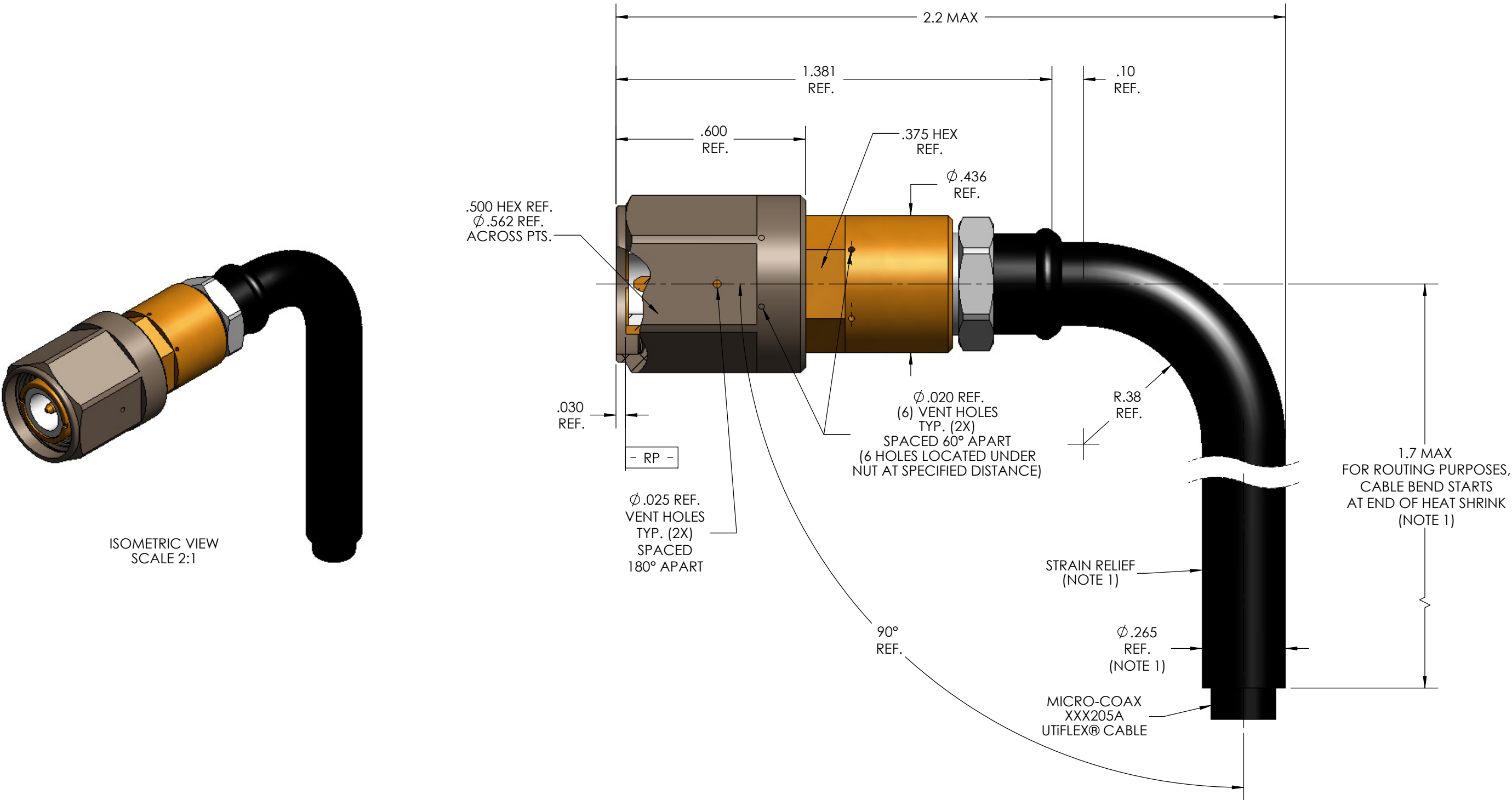
NOTES:

1. THIS CONNECTOR NOT INTENDED FOR PIM APPLICATIONS.
2. VERIFY MULTIPACTION RATINGS FOR EACH APPLICATION.
3. MARKER LOCATION ON THIS DRAWING IS FOR REFERENCE ONLY AND IS SUBJECT TO CHANGE WITHOUT NOTICE.
4. THE MINIMUM DIMENSION FOR THE SHOULDER OF THE CENTER CONTACT SHALL BE 0.208 PER MIL-STD-348A, FIG. 313.3, NOTICE 1, DIM E
5. ALL SPECIFICATIONS LISTED ON THIS DRAWING WILL ALSO APPLY TO CONNECTOR 904020-EM (EQUIPMENT MODEL).
6. SEE SHEET 2 FOR HEAT SHRINK FORMED ELBOW CONFIGURATION.

REV.	DESCRIPTION	DATE	BY	APPVD
A	INITIAL RELEASE - RDCR 77000	9/20/2007	MJM	RS
A1	ECO 75603	10/10/2007	MJM	RS
C	ECO 85024	1/24/2008	PLM	RS
C1	ECO 85146	3/20/2008	MJM	RS
C2	ECO 85453	8/5/2008	MJM	RS
D	ECO 95181	3/16/2009	MJM	RS
D1	ECO 95498	12/22/2009	MJM	RS
E	ECO 115330	6/2/2011	MJM	RS
F	ECO 125436	8/15/2012	MJM	RS

SPECIFICATION DRAWING

THIS SPECIFICATION IS THE PROPERTY OF MICRO-COAX, INC. AND MAY NOT BE USED OR COPIED WITHOUT THE EXPRESS WRITTEN PERMISSION OF MICRO-COAX, INC.		INITIALS		DATE		<div>MICRO-COAX[®]</div> <div>Leading the way in transmission line solutions.</div> <div>Copyright Micro-Coax, Inc.</div>				
		DWN.	MJK	02/02/07						
		CHKD.	CCF	6/15/11						
		APPVD.								
TOLERANCES UNLESS OTHERWISE SPECIFIED		TITLE								
		TNC PLUG, HIGH POWER, XXX205A CABLE, SPACE GRADE								
.XX	± .02	ALL DIMENSIONS IN INCHES UNLESS OTHERWISE SPECIFIED. SCREW THDS. TO BE IN ACCORD WITH ANSI B1.1-1989.		FSCM NO. 64639	SIZE B	SCALE 3:1	SHEET NO. 1 OF 2	DRAWING NO. SD904020	REV F	
.XXX	± .005									
.XXXX	± .0010									
ANGLES	± 2°									



NOTE:
1. MARKER LOCATION ON THIS DRAWING IS FOR REFERENCE ONLY AND
IS SUBJECT TO CHANGE WITHOUT NOTICE.

ALL DIMENSIONS AND TOLERANCES IN INCHES UNLESS OTHERWISE SPECIFIED.		INITIALS		DATE		MICRO-COAX[®] <i>Leading the way in transmission line solutions.</i> <i>Copyright Micro-Coax, Inc.</i>			
		DWN.	MJK	02/02/07					
		CHKD.	CCF	6/15/11					
		APPVD.							
.XX	± .02	TITLE		TNC PLUG, HIGH POWER, HEAT SHRINK FORMED ELBOW, XXX205A CABLE, SPACE GRADE					
.XXX	± .005								
.XXXX	± .0010								
ANGLES	± 2°								
				FSCM NO.	SIZE	SCALE	SHEET NO.	DRAWING NO.	REV.
				64639	B	3:1	2 OF 2	SD904020	F