

Coaxial Slope Equalizer

ZEQ-8-222S+

50Ω 950 to 2150 MHz

The Big Deal

- Good matching
- Minimal deviation in the attenuation slope ± 0.4 dB
- Connectorized package



CASE STYLE: H16

Product Overview

ZEQ-8-222S+ is a 50Ω coaxial slope Equalizer. This model offers excellent performance in the “L band” frequency range of 950-2150 MHz with minimal deviation in the attenuation slope.

Key Features

| Feature | Advantages |
|--|--|
| Minimal deviation in the attenuation slope, ± 0.4 dB | Provide low signal distortion over the passband. Can used in satellite system. |
| Good matching in the passband | Good 50Ω matching between input and output. |
| Connectorized package | This connectorized package is easy to interface with other devices and well suits for test setups. |

Notes

- A. Performance and quality attributes and conditions not expressly stated in this specification document are intended to be excluded and do not form a part of this specification document.
B. Electrical specifications and performance data contained in this specification document are based on Mini-Circuit's applicable established test performance criteria and measurement instructions.
C. The parts covered by this specification document are subject to Mini-Circuits standard limited warranty and terms and conditions (collectively, "Standard Terms"); Purchasers of this part are entitled to the rights and benefits contained therein. For a full statement of the Standard Terms and the exclusive rights and remedies thereunder, please visit Mini-Circuits' website at www.minicircuits.com/MCLStore/terms.jsp



Coaxial Slope Equalizer

50Ω 950 to 2150 MHz

ZEQ-8-222S+

Maximum Ratings

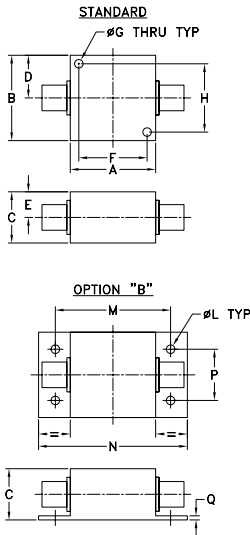
| | |
|-----------------------|----------------|
| Operating Temperature | -40°C to 85°C |
| Storage Temperature | -55°C to 100°C |
| Input power | +20 dBm |

Permanent damage may occur if any of these limits are exceeded.

Coaxial Connections

| | |
|--------|--------------|
| Input | (SMA Male) |
| Output | (SMA Female) |

Outline Drawing

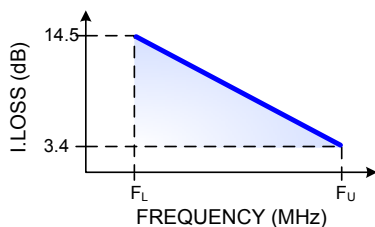


Outline Dimensions (inch mm)

| | | | | | | | |
|-------|-------|-------|-------|------|-------|------|-------|
| A | B | C | D | E | F | G | H |
| 1.25 | 1.25 | .75 | .63 | .38 | 1.000 | .125 | 1.000 |
| 31.75 | 31.75 | 19.05 | 16.00 | 9.65 | 25.40 | 3.18 | 25.40 |

| | | | | | | | |
|----|----|------|-------|-------|-------|------|-------|
| J | K | L | M | N | P | Q | wt |
| -- | -- | .125 | 1.688 | 2.18 | .750 | .06 | grams |
| -- | -- | 3.18 | 42.88 | 55.37 | 19.05 | 1.52 | 70.0 |

Typical Frequency Response



Features

- Good matching in passband
- Minimal deviation in the attenuation slope ± 0.4 dB
- Connectorized package

Applications

- Loss compensation
- Satellite L band applications



CASE STYLE: H16

| Connectors | Model | Price | Qty. |
|----------------------|-------------|-------------|-------|
| SMA | ZEQ-8-222S+ | \$59.95 ea. | (1-9) |
| BRACKET (OPTION "B") | | \$5.00 ea. | (1+) |

+RoHS Compliant

The +Suffix identifies RoHS Compliance. See our web site for RoHS Compliance methodologies and qualifications

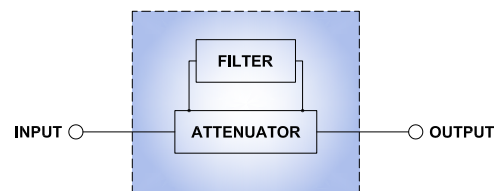
Electrical Specifications at 25°C

| Parameter | Condition | Min. | Typ. | Max. | Units |
|-----------------|--------------|------|------|------|-------|
| Frequency Range | - | 950 | - | 2150 | MHz |
| Insertion Loss | 950 MHz | 12.5 | - | 14.5 | dB |
| | 1550 MHz | 7.4 | - | 10.0 | |
| | 2150 MHz | 3.4 | - | 6.6 | |
| VSWR | 950-2150 MHz | - | 1.1 | 1.6 | :1 |

Typical Performance Data at 25°C

| Frequency (MHz) | Insertion Loss (dB) | VSWR |
|-----------------|---------------------|------|
| 950.0 | 13.74 | 1.13 |
| 1000.0 | 13.32 | 1.11 |
| 1100.0 | 12.48 | 1.09 |
| 1200.0 | 11.62 | 1.06 |
| 1250.0 | 11.19 | 1.05 |
| 1300.0 | 10.77 | 1.04 |
| 1400.0 | 9.95 | 1.03 |
| 1500.0 | 9.13 | 1.05 |
| 1550.0 | 8.74 | 1.06 |
| 1750.0 | 7.26 | 1.11 |
| 1850.0 | 6.59 | 1.13 |
| 1900.0 | 6.27 | 1.14 |
| 2000.0 | 5.69 | 1.16 |
| 2100.0 | 5.14 | 1.18 |
| 2150.0 | 4.88 | 1.19 |

Simplified Functional Schematic



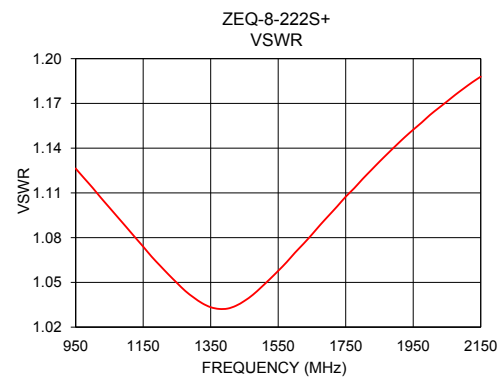
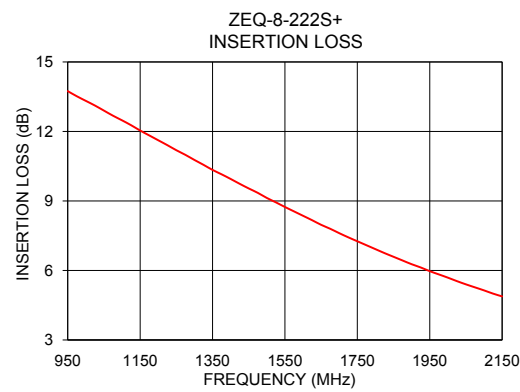
Notes

- A. Performance and quality attributes and conditions not expressly stated in this specification document are intended to be excluded and do not form a part of this specification document.
B. Electrical specifications and performance data contained in this specification document are based on Mini-Circuit's applicable established test performance criteria and measurement instructions.
C. The parts covered by this specification document are subject to Mini-Circuits standard limited warranty and terms and conditions (collectively, "Standard Terms"); Purchasers of this part are entitled to the rights and benefits contained therein. For a full statement of the Standard Terms and the exclusive rights and remedies thereunder, please visit Mini-Circuits' website at www.minicircuits.com/MCStore/terms.jsp



www.minicircuits.com P.O. Box 35166, Brooklyn, NY 11235-0003 (718) 934-4500 sales@minicircuits.com

REV. OR
M141172
ZEQ-8-222S+
EDU1510
URJ
130829
Page 2 of 3



Notes

A. Performance and quality attributes and conditions not expressly stated in this specification document are intended to be excluded and do not form a part of this specification document.

B. Electrical specifications and performance data contained in this specification document are based on Mini-Circuit's applicable established test performance criteria and measurement instructions.

C. The parts covered by this specification document are subject to Mini-Circuits standard limited warranty and terms and conditions (collectively, "Standard Terms"); Purchasers of this part are entitled to the rights and benefits contained therein. For a full statement of the Standard Terms and the exclusive rights and remedies thereunder, please visit Mini-Circuits' website at www.minicircuits.com/MCLStore/terms.jsp