

MECHANICAL
CONTACT: BREAK BEFORE MAKE
ACTUATOR: LATCHING
SWITCHING SPEED: 20 mSEC MAX

ELECTRICAL
ACTUATOR VOLTAGE: 28.0 Vdc (22.0–32.0 Vdc)
ACTUATOR CURRENT: 0.600 A MAX @ 28.0 Vdc
POWER HANDLING: 200 WCW @ 1.0 GHz

ENVIRONMENTAL
OPERATING TEMP: -54°C to +90°C
SINE VIBRATION: 30 G'S rms
LIFE : 1,000,000 CYCLES
RANDOM VIBRATION: 20 G'S rms

SPECIFICATION:

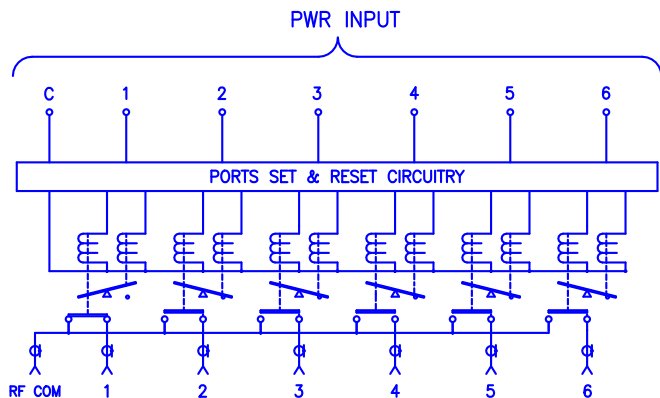
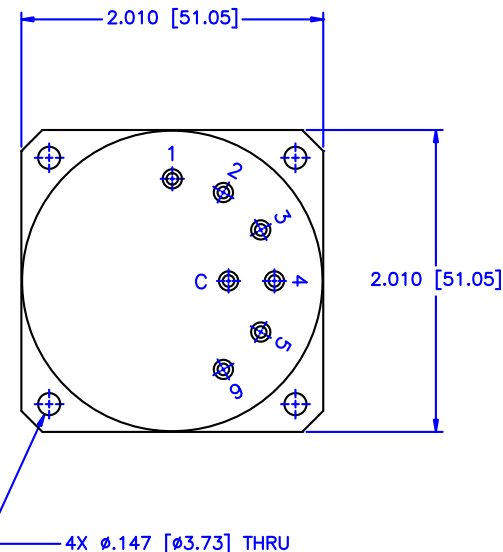
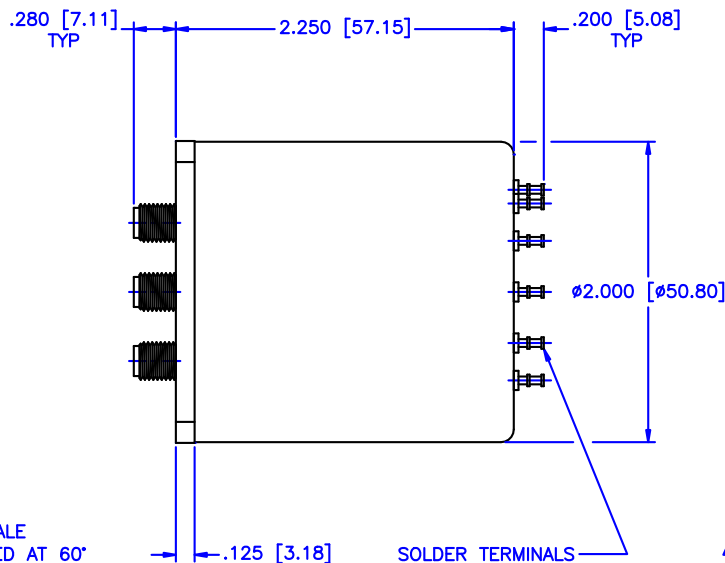
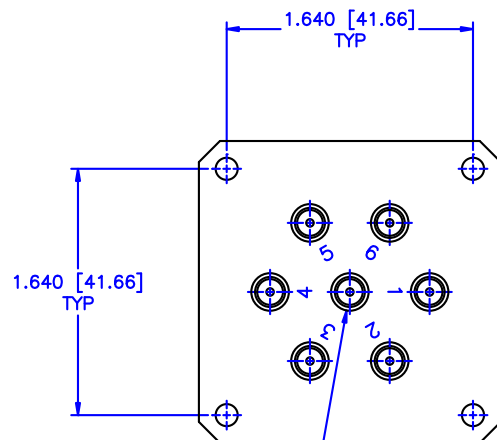
FREQUENCY RANGE (GHz): DC–2.0 2.0–4.0 4.0–8.0 8.0–12.4 12.4–18.0

VSWR (Max.): 1.20:1 1.25:1 1.30:1 1.40:1 1.50:1

INSERTION LOSS (dB): 0.20 0.25 0.30 0.40 0.50

ISOLATION (dB): 90 80 80 70 60

IMPEDANCE: 50 OHMS



MATERIAL:	
<div style="display: flex; justify-content: space-between;"> <div> <p>DRAWN: Paiboon Luekhamhan</p> <p>APPROVED: T. Nguyen</p> </div> <div> <p>DATE: 04-05-2001</p> <p>DATE: 04-05-2001</p> </div> </div>	

<p>MCLI MICROWAVE COMMUNICATIONS LABORATORIES INC. 7255 30TH AVE. N. SAINT PETERSBURG, FL 33710 TEL: (727) 344-6254 FAX: (727) 381-6116 http://WWW.MCLI.COM</p>		<p>SCALE: N/A</p> <p>SHEET: N/A</p>	
<p>UNLESS OTHERWISE SPECIFIED: TOLERANCES IN (INCHES) OR [mm] (MILLIMETERS) FRACTIONS: ± 1/64 DECIMALS: ± 0.01 ± 0.005 ANGLE: ± 1/2°</p>		<p>DRAWING TITLE: ELECTROMECHANICAL SWITCHES</p>	
<p>PART NO.: 06-7-L</p>		<p>CAGE CODE: 0D2L5</p>	
<p>DO NOT SCALE THE DRAWING</p>		<p>SIZE: N/A</p> <p>REV: N/A</p> <p>DWG NO.: 81693</p>	