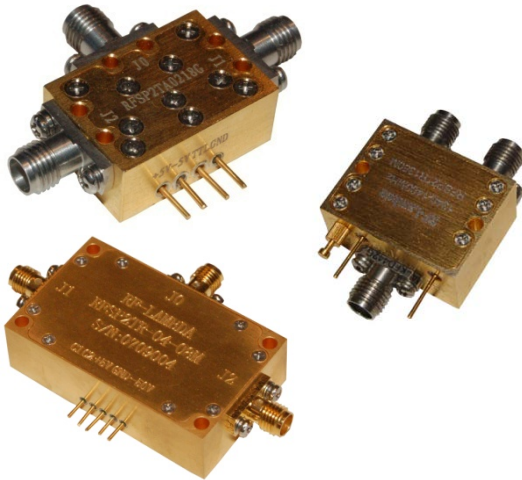




5W 2.0-4.0GHz Coaxial SP2T



Features

- Wide Band Operation 2.0-4.0GHz
- High Power Handle Capability up to 100W upon request.
- TTL compatible driver include
- Fast Switching Speed
- Low Insertion Loss and High Isolation
- Temperature Range -55°C~+85°C
- Customization available upon request

Absorptive SP2T- Single Pole Double Throw

Part Number	Frequency (GHz)	Insert. Loss (dB)	VSWR (Max:1)	Isolation min (dB)	Avg. Power Handling (Watts)	Switching Speed (ns)
RFSP2TA0204G5W	2-4	1.0	1.4	80	5W CW max..	50

Mechanical Specification

Case Style: W201, W202, W203 type.
Finishing: Gold plating for brass material
Other finishing available
Connector: SMA-F Per MIL-C-39012
Control PIN: 0.02" dia x 0.15" solder pins
Weight: 20 grams max.
Mounting: (4 / 6) 0.1" dia through holes

Electrical Operation

DC Biasing:
+5.0V (+/-0.5V 30mA max.)
-5.0V (+/-0.5V 30mA max.)
High Voltage Biasing is required for high RF power model.

TTL Logic Control:

0 J0->J2
1 J0->J1

Power Handle: 5W (upon request)

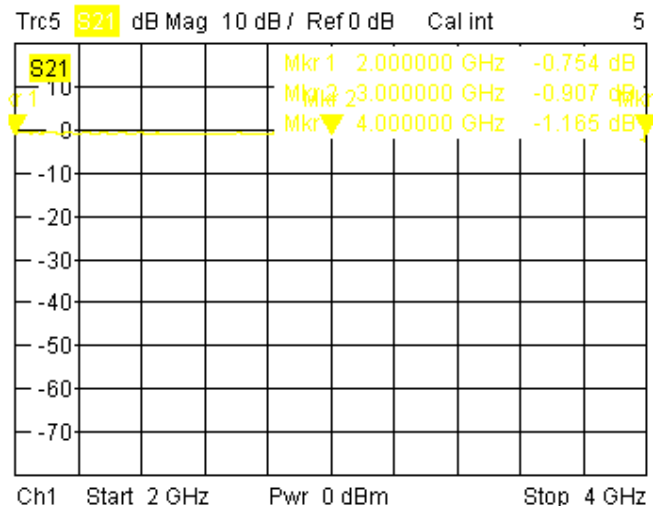
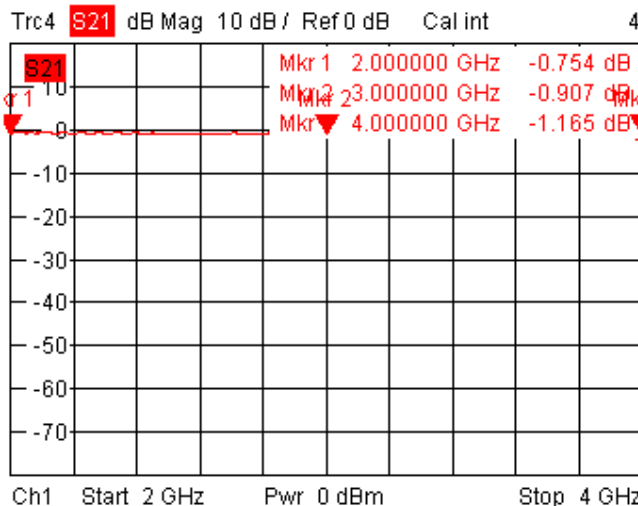
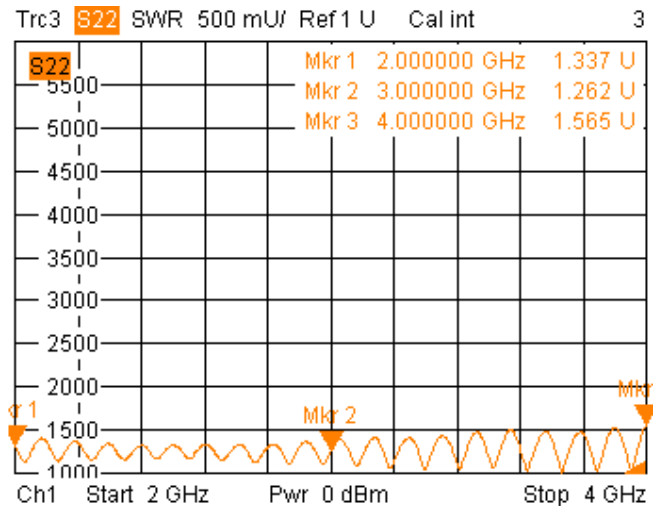
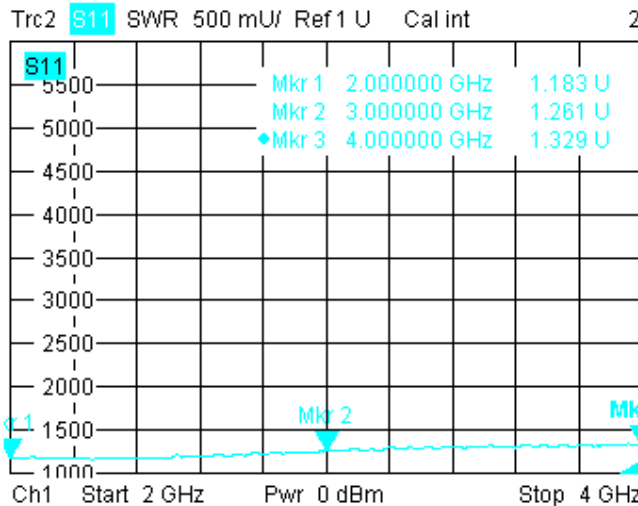
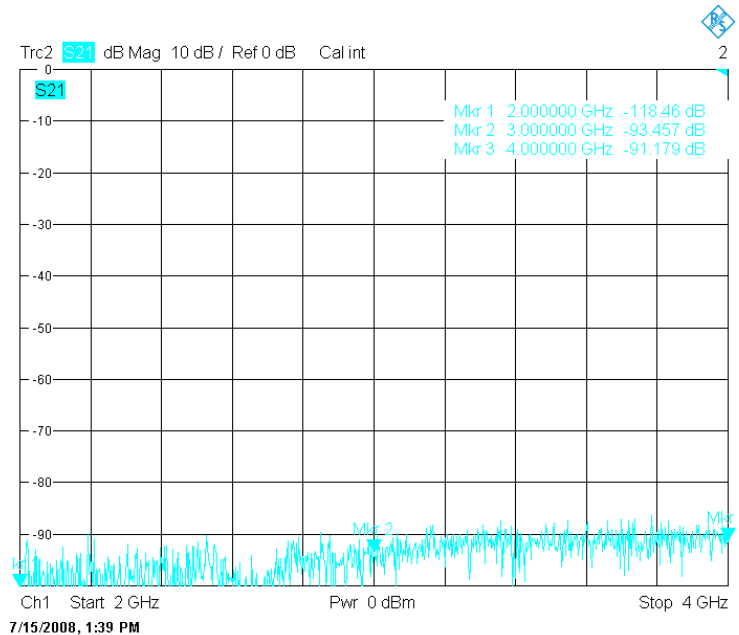
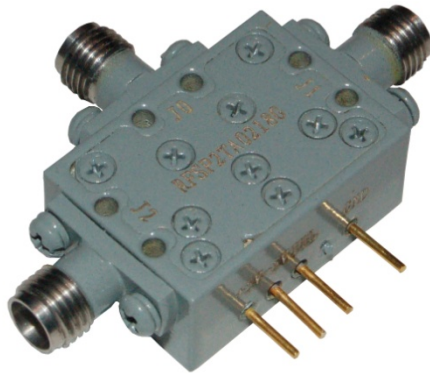


RF-LAMBDA

The power beyond expectations

2-4GHz PIN SP2T

Electrical Spec.



Absorptive / Reflective Coaxial Single Pole Double Throw Switch 2.0-4.0GHz

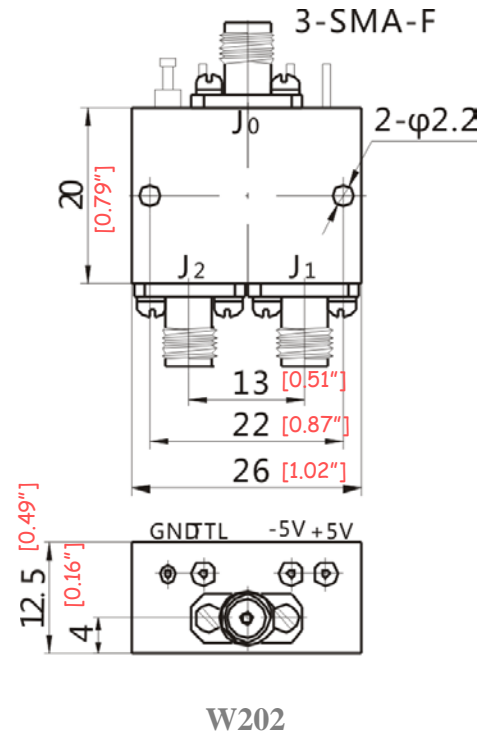
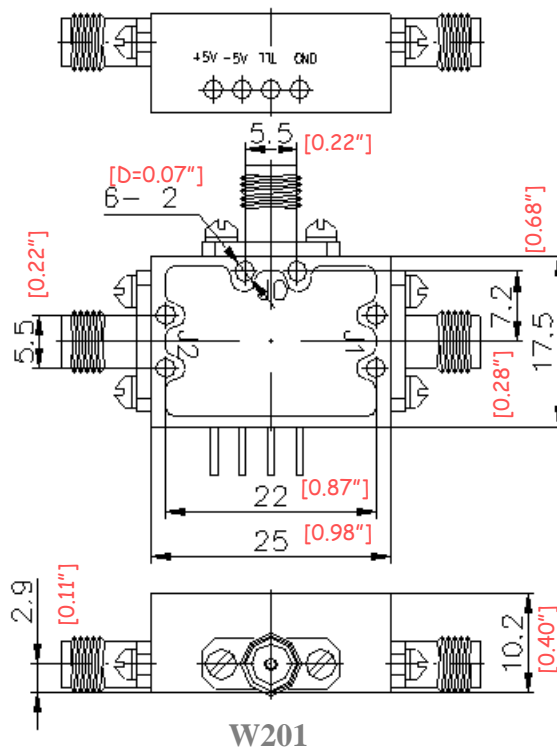
7/15/2008, 1:37 PM



RF-LAMBDA

The power beyond expectations

2-4GHz PIN SP2T



Note: Contact RF-Lambda for faster switching speed, higher power handle, higher isolation

1.Higher power handle capability will give lower isolation , higher biasing current and slower switching speed.

2.Narrower frequency band will improve insertion loss and isolation.

Absorptive / Reflective Coaxial Single Pole Double Throw Switch 2.0-4.0GHz