



500 MHz to 2.5 GHz N Bias Tee Rated
To 7000 mA And 100 Volts DC

TECHNICAL DATA SHEET

PE1618

Configuration

| | |
|--------------------------------|------------|
| RF Port Connector | N Female |
| RF Port Connector Impedance | 50 Ohms |
| DC/RF Port Connector | N Female |
| DC/RF Port Connector Impedance | 50 Ohms |
| DC Port Connector | Solder Pin |

Electrical Specifications (Values at 25°C, sea level)

| Description | Minimum | Typical | Maximum | Units |
|----------------------|---------|---------|---------|-------|
| Frequency Range | 500 | | 2.5 | MHz |
| RF Port VSWR | | | 1.4 | |
| RF to Bias Isolation | | | 20 | dB |
| RF Input Power | | | 50 | Watts |
| DC Voltage | | | 100 | Volts |
| DC Current | | | 7,000 | mA |

Mechanical Specifications

Temperature

| | |
|-----------------|-------------------|
| Operating Range | -55 to +105 deg C |
| Storage Range | -60 to +90 deg C |

Size

| | |
|------------|---------------------|
| Length | 2.33 in [59.18 mm] |
| Width/Dia. | 0.713 in [18.11 mm] |
| Height | 1.575 in [40.01 mm] |

Connectors

| Description | RF Port Connector | RF/DC Port Connector | DC Port Connector |
|-------------|-------------------|----------------------|-------------------|
| Type | N Female | N Female | Solder Pin |

Compliance Certifications (visit www.Pasternack.com for current document)

RoHS Compliant

Plotted and Other Data

Notes:

- Values at 25 °C, sea level
- Bias path resistance: .010 Ohm Max

Click the following link (or enter part number in "SEARCH" on website) to obtain additional part information including price, inventory and certifications: [500 MHz to 2.5 GHz N Bias Tee Rated To 7000 mA And 100 Volts DC PE1618](#)

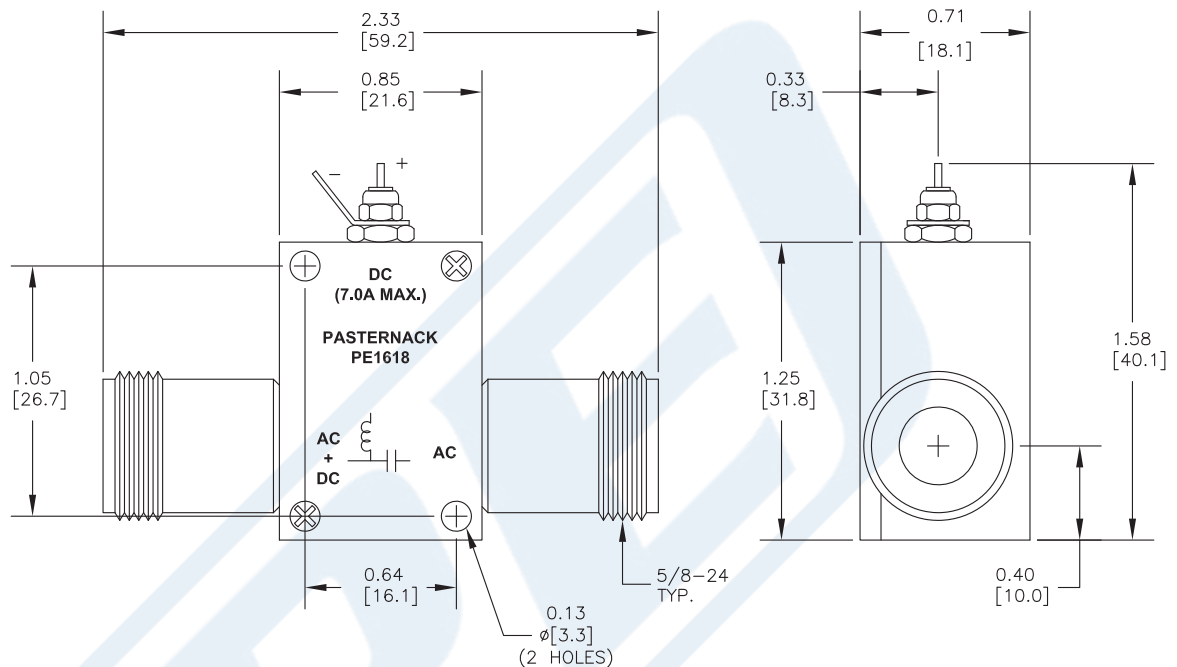


500 MHz to 2.5 GHz N Bias Tee Rated
To 7000 mA And 100 Volts DC

TECHNICAL DATA SHEET

PE1618

Outline Drawing



500 MHz to 2.5 GHz N Bias Tee Rated To 7000 mA And 100 Volts DC from Pasternack Enterprises has same day shipment for domestic and International orders. Our RF, microwave and millimeter wave products maintain a 99% availability and are part of the broadest selection in the industry.

Click the following link (or enter part number in "SEARCH" on website) to obtain additional part information including price, inventory and certifications: [500 MHz to 2.5 GHz N Bias Tee Rated To 7000 mA And 100 Volts DC PE1618](http://www.pasternack.com/250-mhz-2.5-ghz-n-bias-tee-7000-ma-100-volts-dc-pe1618-p.aspx)

URL: <http://www.pasternack.com/250-mhz-2.5-ghz-n-bias-tee-7000-ma-100-volts-dc-pe1618-p.aspx>

The information contained in this document is accurate to the best of our knowledge and representative of the part described herein. It may be necessary to make modifications to the part and/or the documentation of the part, in order to implement improvements. Pasternack reserves the right to make such changes as required. Unless otherwise stated, all specifications are nominal. Pasternack does not make any representation or warranty regarding the suitability of the part described herein for any particular purpose, and Pasternack does not assume any liability arising out of the use of any part or documentation.