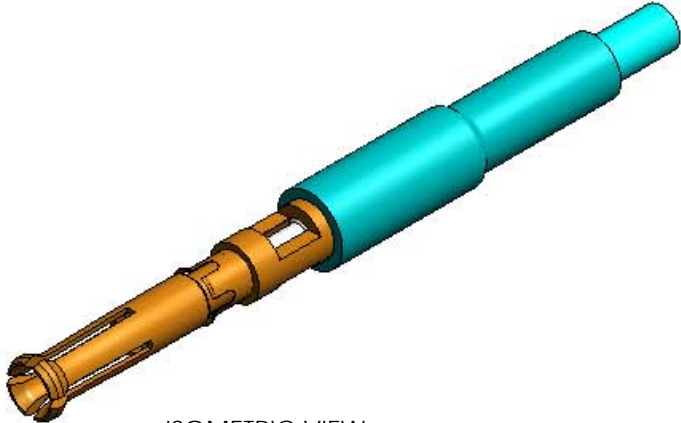


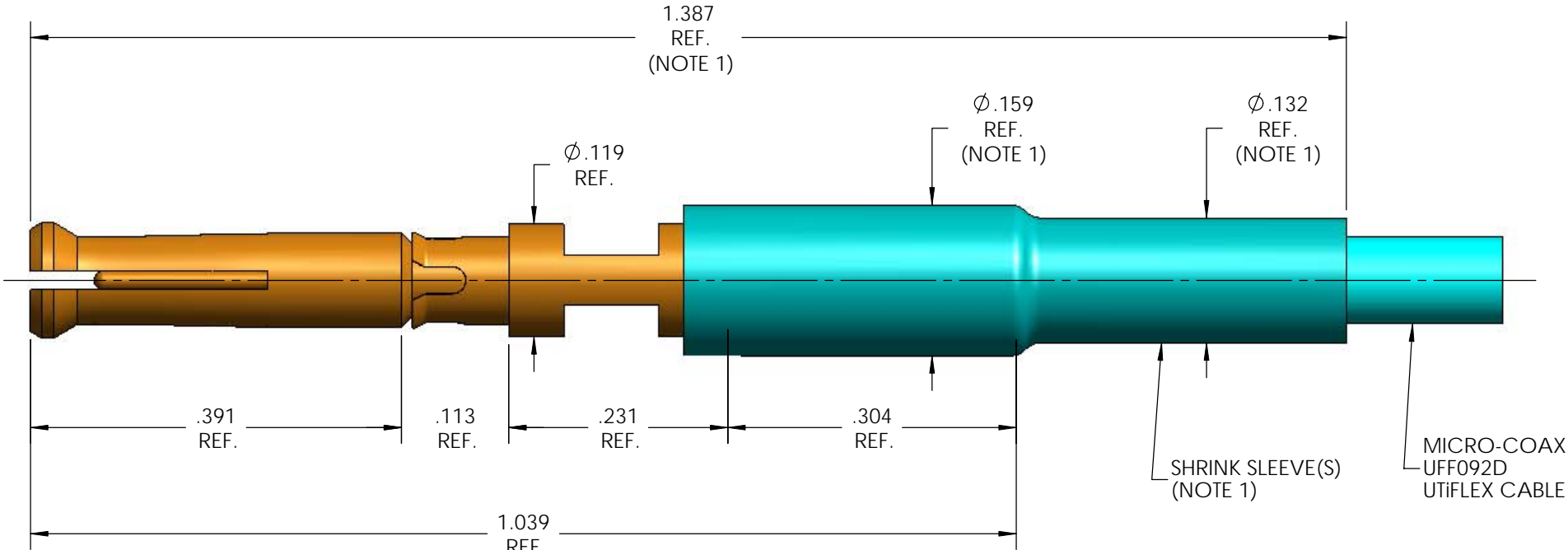
MECHANICAL CHARACTERISTICS	
INTERFACE	SAE AS39029/80 - 438
SLANT SHEET	N/A
FORCE TO ENGAGE	1.5 OZ. MIN : 20 OZ. MAX.
FORCE TO DISENGAGE	1.5 OZ. MIN : 20 OZ. MAX.
DURABILITY	100 CYCLES MIN.
CABLE RETENTION	10 LBS. MIN.
MASS	MASS = N/A
ELECTRICAL CHARACTERISTICS	
IMPEDANCE	50 Ohms NOM.
MAXIMUM FREQUENCY	1 GHz
VSWR DC - 1 GHz	1.15:1 MAX
INSERTION LOSS	0.1 dB MAX.
DIELECTRIC WITHSTANDING VOLTAGE	750 Vrms MIN.
INSULATION RESISTANCE	5000 MegaOhms MIN.
RF LEAKAGE DC - 18 GHz	-90 dB MIN.
CORONA	190 Vrms MIN. @ 70,000 FEET
RF HIGH POTENTIAL	500 Vrms MIN.
CONTACT RESISTANCE (INNER)	8.0 MilliOhms MAX.
CONTACT RESISTANCE (OUTER)	4.0 MilliOhms MAX.
ENVIRONMENTAL CHARACTERISTICS	
OPERATING TEMPERATURE	-65 °C TO 85 °C
VIBRATION	MIL-STD-1344, METHOD 2005, TEST CONDITION II
MECHANICAL SHOCK	MIL-STD-1344, METHOD 2004, TEST CONDITION I
THERMAL SHOCK	MIL-STD-202, METHOD 107, CONDITION B
MOISTURE RESISTANCE	MIL-STD-202, METHOD 106, CONDITION (NO VIBRATION)
CORROSION	MIL-STD-202, METHOD 101, CONDITION B, 5%
MATERIALS AND FINISH	
BODY & INNER CONTACT	SUITABLE COPPER ALLOY, PER AS39029 GOLD PLATED PER ASTM B488, TYPE IIC, OVER NICKEL PLATE PER AMS-QQ-N-290
CABLE ADAPTER	BERYLLIUM COPPER, PER ASTM-B-196, GOLD PLATED PER MIL-DTL-45204, OVER NICKEL PLATE PER AMS-QQ-N-290
INSULATOR(S)	TFE FLUORCARBON
RETAINING CLIP	SUITABLE COPPER ALLOY, PER AS39029
APPLICATION	
CABLE(S)	UFF092D
INSTALLATION	PER CONFIGURATOR

THIS DRAWING IS PROPRIETARY AND CONFIDENTIAL.

REV	DESCRIPTION	DATE	BY	APPVD	CHKD
A	ECO 115105	2/18/2011	MJM	RS	CCF



ISOMETRIC VIEW
SCALE 3:1



SPECIFICATION DRAWING

THIS SPECIFICATION IS THE PROPERTY OF MICRO-COAX, INC. AND MAY NOT BE USED OR COPIED WITHOUT THE EXPRESS WRITTEN PERMISSION OF MICRO-COAX, INC.	INITIALS		DATE		<div>MICRO-COAX[®]</div> <div>Leading the way in transmission line solutions.</div> <div>Copyright Micro-Coax, Inc.</div>					
	DWN.	PLM	8/3/04							
	CHKD.	CCF	2/15/11							
	APPVD.									
TOLERANCES UNLESS OTHERWISE SPECIFIED			TITLE							
			#16 SOCKET CONTACT, UFF092D							
.XX	± .02		ALL DIMENSIONS IN INCHES UNLESS OTHERWISE SPECIFIED. SCREW THDS. TO BE IN ACCORD WITH ANSI B1.1-1989.		FSCM NO.	SIZE	SCALE	SHEET NO.	DRAWING NO.	REV
.XXX	± .005				64639	B	6:1	1 OF 1	SD903977	A
.XXXX	± .0010									
ANGLES	±2°									

NOTE:

1. MARKER LOCATION ON THIS DRAWING IS FOR REFERENCE ONLY AND IS SUBJECT TO CHANGE WITHOUT NOTICE.