



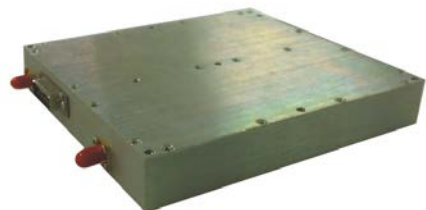
Microwave Town Company, LLC

MTPA20260245471

2000MHz-6000MHz 50Watt Broadband Power Amplifier

The MTPA20260245471 is a completely solid state microwave power amplifier module which features high efficiency, high output power and wide dynamic range. It uses advanced microwave device technology and provides high reliability and ruggedness product for our customer. MTPA20260245471 has the function of over current and over temperature protection to guarantee the safety of working in various harsh conditions.

- 2GHz~6GHz ultra-broadband
- Psat:50W
- High efficiency, High reliability and ruggedness
- Good linearity, Low distortion
- Applications: Test & Measurement, Broadcasting, Communication, etc



ELECTRICAL CHARACTERISTICS @ 28V AC +25° C 50Ω

PARAMETER	UNIT	MIN	TYPICAL	MAX
Frequency Response	MHz	2000		6000
Power Gain	dB		45	
Gain Flatness per 40 MHz bandwidth	+/-dB		1	
Gain Flatness via Temperature	+/-dB		2	
Saturated Output Power	dBm		47	
Efficiency @ Sat Output Power	%		25	
Output Power @ 1dB gain compression point	dBm		45	
Harmonic Distortion	dBc		-25	
Spurious Signals	dBc		-60	
IM3@P1dB	dBc		-20	
Input For Rated Output Power	dBm		10	
Input VSWR			2:1	
Output VSWR			2:1	

ENVIRONMENTAL SPECIFICATIONS (DESIGN TO MEET)

PARAMETER	UNIT	MIN	TYPICAL	MAX
Voltage	V (AC)		28	32
Current	A		3	7
Operating Temperature	°C	0		50
Non-Operating Temperature	°C	-40		70

MECHANICAL SPECIFICATIONS

PARAMETER	UNIT	MIN	TYPICAL	MAX
Dimensions W x H x D	Inch		6.60X5.80X1.00	
Weight	Kg		1	
RF Input & Output			SMA(F), SMA(F)	

Ph: (626) 823-4815

Fax: (626) 698-1638

www.MicrowaveTown.com



Microwave Town Company, LLC

MTPA20260245471

2000MHz-6000MHz 50Watt Broadband Power Amplifier

OUTLINE DRAWINGS

