

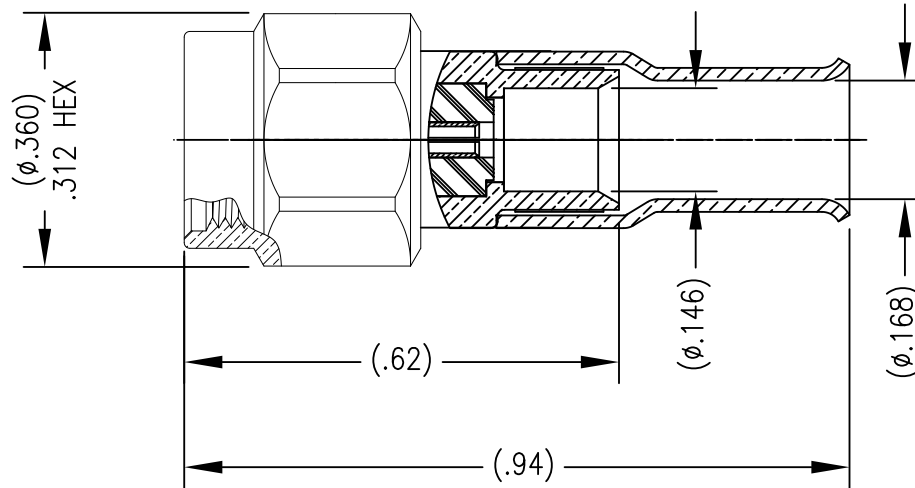
- 1.0 PERFORMANCE (sea level)
- 1.1 FREQUENCY RANGE: DC-20 GHz
- 1.2 NOMINAL IMPEDANCE: 50 OHMS
- 1.3 DWV: 750 Vrms @ 60 Hz
- 1.4 TEMPERATURE RANGE: -65/+165°C
- 1.5 PIM: -153 dBc (-AG ONLY)

- 2.0 MATERIALS (RoHS/REACH)
- 2.1 CONTACTS: BeCu
- 2.2 BODY: BRASS
- 2.3 DIELECTRIC: PTFE
- 2.4 RETAINING RING: BeCu
- 2.5 GASKET: Si RUBBER
- 2.6 CRIMP FERRULE: Cu (OPTIONAL)
- 2.7 COUPLING NUT: SEE TABLE

- 3.0 FINISH: SEE TABLE
- 4.0 MECHANICAL
- 4.1 INTERFACE REF MIL-STD-348
- 4.2 CONTACT RETENTION: 6 LBS AXIAL
- 4.3 COUPLING PROOF: 15 IN\*LBS
- 4.4 MATING TORQUE: 6-10 IN\*LBS
- 4.5 DURABILITY: 100 CYCLES
- 4.6 1201-28 M1-GJP HAS QUICK THRD C-NUT
- 4.7 CABLE ASSEMBLY INSTRUCTIONS  
CA-9967 eSERIES

DWG NO. OL-1201-28-1		REV. K	
PART NUMBER	BODY	CONTACT	C-NUT
1201-28-AG	ALBALOY	SILVER	BRASS
1201-28-GJP	GOLD	GOLD	SS-303
1201-28 M1-GJP	GOLD	GOLD	SS-303

PLATE PER STI 7.3.1-8



K	UPDATE CABLE ASSEMBLY INSTRUCTIONS	MIX	9/8/11	FSH	FSH
J	-AG WAS AGP	IMP	3/29/11	RJG	SJS
H	CRIMP DIE FROM .213 TO .231 HEX	MIX	10/27/08	FSH	FSH
G	UPDATE PROCEDURES	MIX	7/19/07	FSH	FSH
F	UPDATE PERFORMANCE SPECS. PER ACTUAL TEST DATA	MIX	6/21/07	DVP	FSH
A	ORIGINAL	NEW	1/3/05		
Rev.	Revisions	Disp.	Date	Dwn.	Appd.

THIS DRAWING CONTAINS CONFIDENTIAL INFORMATION PROPRIETARY TO SAN-TRON, INC. IT MUST NOT BE REPRODUCED OR DISCLOSED TO OTHERS OR USED IN ANY OTHER WAY, IN WHOLE OR PART EXCEPT AS AUTHORIZED IN WRITING BY SAN-TRON, INC.

UNLESS OTHERWISE SPECIFIED:  
ALL DIMENSIONS ARE IN INCHES.  
ALL DIMENSIONS ARE AFTER PLATING.  
.XXX= ±.005 ALL MACHINED SURFACES  $\frac{64}{\text{MAX}}$ .  
.XX= ±.01 ANG.±1/2' FRACTIONAL= ±1/64

Ⓢ.004 MAX. TIR.      ⊥ AXIS .001

THIRD ANGLE PROJECTION

DWN	LAP	1/3/05
CHKD	FSH	1/3/05
APPR	FSH	1/3/05

**SAN-TRON, INC.**  
4 NEWBURYPORT TPK. IPSWICH MA USA 01938  
TEL: 978 - 356 -1585 FAX: 978 - 356 -1573  
WWW.SANTRON.COM E MAIL: santron@santron.com

**TITLE eSMA PLUG, DIRECT SOLDER FOR TFLEX-402**

MATERIAL: SEE NOTES      FINISH: SEE TABLE

CAGE CODE: 50896      DWG NO. OL-1201-28-1      REV. K

SCALE X:X

DO NOT SCALE DRAWING