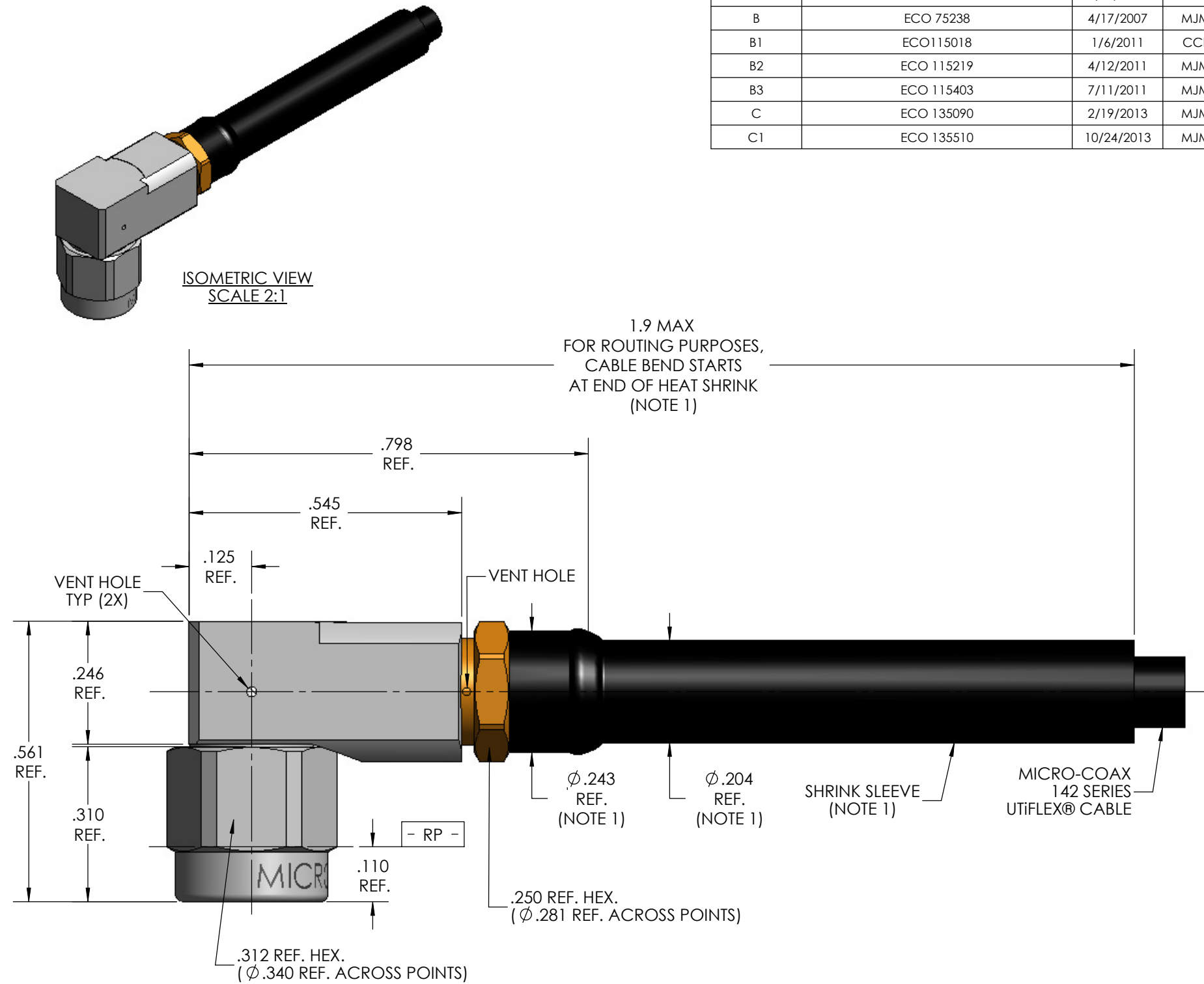


MECHANICAL CHARACTERISTICS	
INTERFACE	MIL-STD-348, FIGURE 310-1
IN ACCORDANCE WITH THE INTENT OF SLANT SHEET	MIL-PRF-39012/56 REF.
RECOMMENDED MATING TORQUE	9 IN-LBS. NOM.
COUPLING PROOF TORQUE	15 IN-LBS. MIN.
COUPLING NUT RETENTION	60 LBS. MIN.
FORCE TO ENGAGE	2 IN-LBS. MAX.
FORCE TO DISENGAGE	2 IN-LBS. MIN.
DURABILITY	500 CYCLES MIN.
AXIAL CONTACT RETENTION (FROM INTERFACE)	6 LBS. MIN.
AXIAL CONTACT RETENTION (FROM CABLE)	6 LBS. MIN.
CABLE RETENTION	10 LBS. MIN.
MASS	6.67 GRAMS NOM.
ELECTRICAL CHARACTERISTICS	
IMPEDANCE	50 Ohms NOM.
MAXIMUM FREQUENCY	18 GHz
VSWR DC - 12.4 GHz	1.12:1 MAX.
12.4 - 18 GHz	1.16:1 MAX.
INSERTION LOSS	0.04 \sqrt{f} (GHz) dB MAX.
DIELECTRIC WITHSTANDING VOLTAGE	750 Vrms MIN.
INSULATION RESISTANCE	5000 MegaOhms MIN.
RF LEAKAGE DC - 18 GHz	-90 dB MIN.
CORONA	200 Vrms MIN. @ 70,000 FEET
RF HIGH POTENTIAL	500 Vrms MIN.
CONTACT RESISTANCE (INNER)	4.0 MilliOhms MAX.
CONTACT RESISTANCE (OUTER)	2.0 MilliOhms MAX.
ENVIRONMENTAL CHARACTERISTICS	
OPERATING TEMPERATURE	-100 °C TO 150 °C
VIBRATION	MIL-STD-202, METHOD 204, CONDITION D
MECHANICAL SHOCK	MIL-STD-202, METHOD 213, CONDITION I
THERMAL SHOCK	MIL-STD-202, METHOD 107, CONDITION B
MOISTURE RESISTANCE	MIL-STD-202, METHOD 106, CONDITION (NO VIBRATION)
CORROSION	MIL-STD-202, METHOD 101, CONDITION B, 5%
MATERIALS AND FINISH	
BODY & COUPLING NUT	STEEL, CORROSION RESISTANT, PER ASTM-A-582, UNS NO. S30300, PASSIVATE PER ASTM-A-967
CONTACT(S) & CLAMP NUT	BERYLLIUM COPPER, ASTM-B-196, GOLD PLATED PER MIL-DTL-45204, OVER NICKEL PLATE PER AMS-QQ-N-290
SNAP RING	BERYLLIUM COPPER, PER ASTM-B-197
INSULATOR(S)	TFE FLUOROCARBON PER ASTM-D-1710
DIELECTRIC BEAD(S)	POLYETHERIMIDE THERMOPLASTIC, PER ASTM-D-5205
APPLICATION	
CABLE(S)	142 SERIES
INSTALLATION	PER CONFIGURATOR

THIS DRAWING IS PROPRIETARY AND CONFIDENTIAL.



- NOTE:
- MARKER LOCATION ON THIS DRAWING IS FOR REFERENCE ONLY AND IS SUBJECT TO CHANGE WITHOUT NOTICE.
 - ALL SPECIFICATIONS LISTED ON THIS DRAWING WILL ALSO APPLY TO CONNECTOR 904205-EM (EQUIPMENT MODEL).

REV.	DESCRIPTION	DATE	BY	APPVD
A	INITIAL RELEASE	3/11/2005	JMK	RS
B	ECO 75238	4/17/2007	MJM	RS
B1	ECO115018	1/6/2011	CCF	RS
B2	ECO 115219	4/12/2011	MJM	RS
B3	ECO 115403	7/11/2011	MJM	RS
C	ECO 135090	2/19/2013	MJM	RS
C1	ECO 135510	10/24/2013	MJM	RS

THIS SPECIFICATION IS THE PROPERTY OF MICRO-COAX, INC. AND MAY NOT BE USED OR COPIED WITHOUT THE EXPRESS WRITTEN PERMISSION OF MICRO-COAX, INC.		INITIALS		DATE		<div>MICRO-COAX</div> <div>PROVEN RELIABLE</div>					
		DWN.	SRS	12/01/04							
		CHKD.	CCF	2/25/13							
		APPVD.									
TOLERANCES UNLESS OTHERWISE SPECIFIED		TITLE									
		SMA, PLUG MITER RIGHT ANGLE, 142 SERIES, VENTED, SPACE GRADE									
.XX	± .02	ALL DIMENSIONS IN INCHES UNLESS OTHERWISE SPECIFIED. SCREW THDS. TO BE IN ACCORD WITH ANSI B1.1-1989.				FSCM NO.	SIZE	SCALE	SHEET NO.	DRAWING NO.	REV
.XXX	± .005					64639	B	4:1	1 OF 1	SD904205	C1
.XXXX	± .0010										
ANGLES	± 2°										