

ADAPTERS, BETWEEN-SERIES

7mm / SMA, DC - 18 GHz, Precision Flange Mount

SPECIFICATIONS:

Models: 5314, 5315

RoHS
Compliant

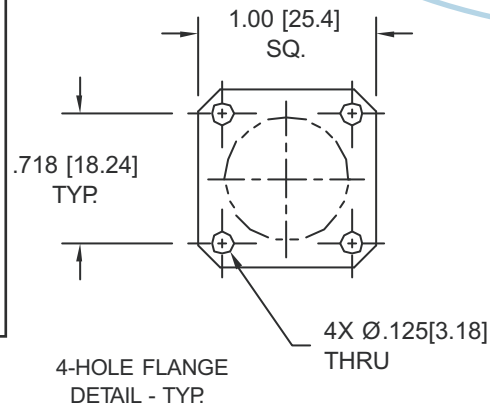
AEROFLEX
A passion for performance.

Electrical:

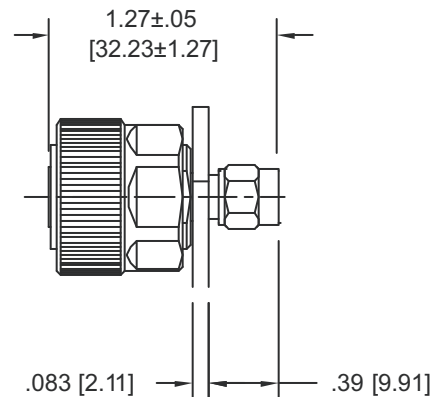
Frequency Range _____ DC - 18 GHz
VSWR _____ 1.08:1 Max.
Impedance _____ 50 Ohms
Operating Temp Range _____ -65°C to +125°C

Mechanical:

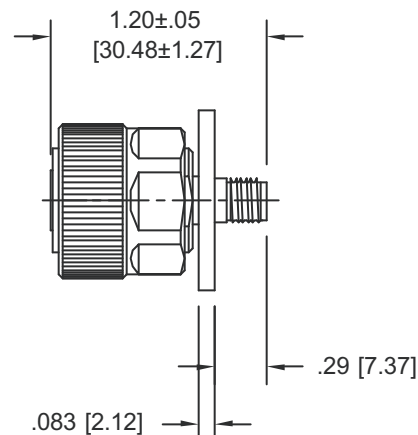
7mm Connectors _____ Electropolished Stainless Steel
IAW IEEE STD 287
SMA Connectors _____ Passivated Stainless Steel
Mates with MIL-STD-348
Conductors _____ Gold Plated Beryllium Copper



Model Number: **5314**
7mm / SMA Male



Model Number: **5315**
7mm / SMA Female



Note: Dimensions in Brackets are Expressed in Millimeters and are for Reference Only.

5314: REV D

AEROFLEX
INMET

Aeroflex / Inmet, Inc. • 300 Dino Drive, Ann Arbor, MI 48103 • U.S.A.
888-244-6638 or 734-426-5553 • FAX: 734-426-5557
www.aeroflex.com/inmet • inmet@aeroflex.com