

# SMB Termination

50Ω

DC to 6000 MHz

ROSE-50+



## Maximum Ratings

Operating Temperature	-55°C to 100°C
Storage Temperature	-55°C to 100°C
Permanent damage may occur if any of these limits are exceeded.	

## Features

- SMB connector with female center contact
- wideband, DC to 6000 MHz
- rugged construction

CASE STYLE: LL604

Connectors	Model	Price	Qty.
SMB-FEM	ROSE-50+	\$9.95 ea.	(1-9)

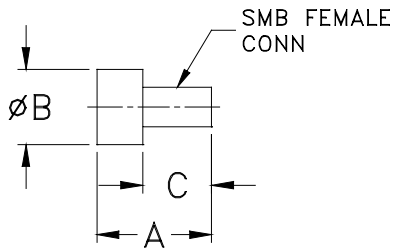
## Applications

- cellular communications
- test set-up
- instrumentation
- PCS

**+RoHS Compliant**

The +Suffix identifies RoHS Compliance. See our web site for RoHS Compliance methodologies and qualifications

## Outline Drawing



## Electrical Specifications

FREQUENCY (MHz)	IMPEDANCE (OHMS)	RETURN LOSS (dB) MIN.			POWER RATING* (W)
		DC-2 GHz	DC-4 GHz	DC-6 GHz	
DC-6000	50	30	23	20	0.50

\*At 70°C, derate linearly at 0.005W/°C to .35W at 100°C.

## Typical Performance Data

Frequency (MHz)	Return Loss (dB)
1.00	69.84
100.00	70.87
200.00	65.00
500.00	50.04
1000.00	49.61
2000.00	45.48
3000.00	47.04
4000.00	35.88
5000.00	28.01
6000.00	24.18

## Outline Dimensions (inch/mm)

A	B	D	wt
0.55	0.36	0.33	grams
13.97	9.14	8.38	4.0



## Notes

- A. Performance and quality attributes and conditions not expressly stated in this specification document are intended to be excluded and do not form a part of this specification document.  
B. Electrical specifications and performance data contained in this specification document are based on Mini-Circuit's applicable established test performance criteria and measurement instructions.  
C. The parts covered by this specification document are subject to Mini-Circuits standard limited warranty and terms and conditions (collectively, "Standard Terms"); Purchasers of this part are entitled to the rights and benefits contained therein. For a full statement of the Standard Terms and the exclusive rights and remedies thereunder, please visit Mini-Circuits' website at [www.minicircuits.com/MCLStore/terms.jsp](http://www.minicircuits.com/MCLStore/terms.jsp)



[www.minicircuits.com](http://www.minicircuits.com) P.O. Box 350166, Brooklyn, NY 11235-0003 (718) 934-4500 [sales@minicircuits.com](mailto:sales@minicircuits.com)

REV. D  
M128455  
ROSE-50+  
RS/CP/AM  
110426