



EUROPEAN ANTENNAS

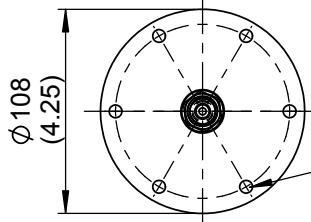
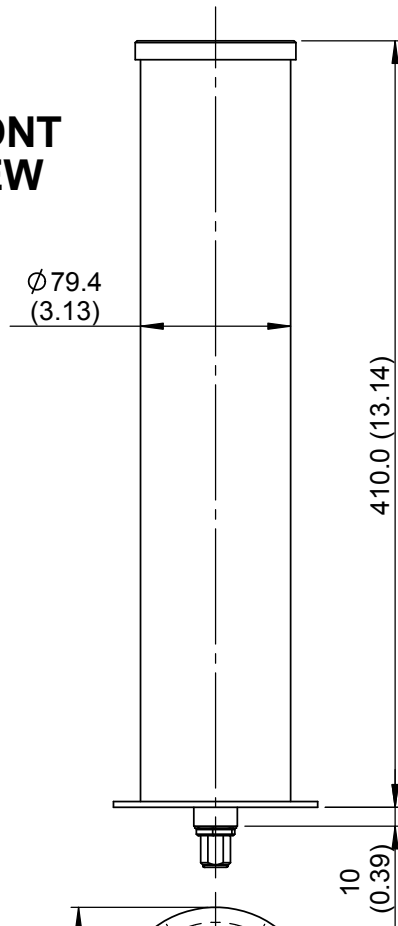
Excellence through design
Creative in concept

METEOSAT HEMI OMNI ANTENNA

MODEL: MHA3-402L/1207

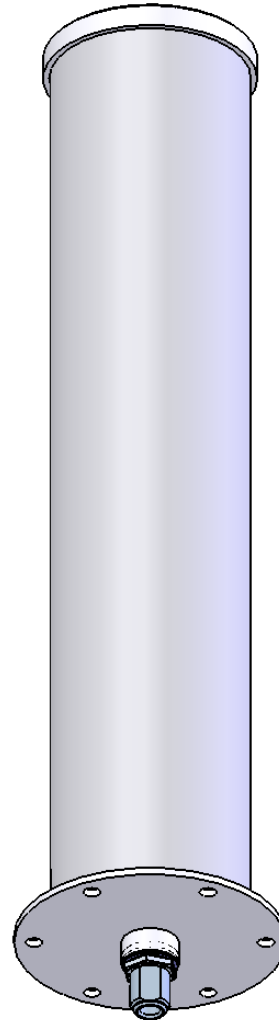
FREQUENCY:	400 - 404 MHz	GAIN:	3 dBi Nominal
POLARISATION:	Left Hand Circular	BEAMWIDTH:	160° (Az) x 160° (El)
AXIAL RATIO:	3 dB Typical	VSWR:	2:1 Maximum
POWER RATING:	50 W	FRONT TO BACK:	14 dB
TEMPERATURE:	-20° to +50°C	MASS:	1.0 Kg / 2.2 lbs
FINISH:	Epoxy Gloss White	WIND LOADING:	5.3 Kg / 11.6 lbs @ 100 mph

FRONT VIEW



MOUNTED VIA 6 OFF
Ø6.8 (0.27) HOLES
EQUI-SPACED ON
92.1 (3.63) PCD

BASE VIEW



ISOMETRIC VIEW

N(F)
CONNECTOR

GA: 1207-1 | Issued: 190405 | DIMENSIONS: mm (inches) | L

EUROPEAN ANTENNAS LTD.
LAMBDA HOUSE, CHEVELEY
NEWMARKET, SUFFOLK, CB8 9RG,
UNITED KINGDOM



Certificate No 9268

Tel: +44 (0)1638 731888
Fax: +44 (0)1638 731999
E-Mail: sales@european-antennas.co.uk
Website: www.european-antennas.co.uk