

Surface Mount Band Stop Filter

BSF-C140+

50Ω 127.25 to 152.75 MHz

The Big Deal

- High rejection, 49 dB typical
- Good VSWR, 1.2:1 typical in passband
- Stopband (127.25 to 152.75 MHz)
- Miniature shielded package



CASE STYLE: HU1186

Product Overview

The BSF-C140+ is stopband filter fabricated using SMT Technology. Covering 127.25 to 152.75 MHz stopband, this units offer good rejection. This unit uses a miniature high Q capacitors and wire welded inductors for high reliability. It has repeatable performance across production lots and consistent performance across temperature.

Key Features

Feature	Advantages
High rejection, 49 dB typical	BSF-C140+ enables the filter to attenuate spurious signals and reject harmonics for broadband of frequencies.
Good VSWR 1.2:1 typical in the pass-band	This filter maintains typical VSWR over a passband frequency range which provided good interface when used with other devices.
Shielded package	Shielded package (Size of .087" x 0.80" x 0.25") reduced interface with and from the surrounding components.



P.O. Box 350166, Brooklyn, New York 11235-0003 (718) 934-4500 Fax (718) 332-4661 The Design Engineers Search Engine  Provides ACTUAL Data Instantly at minicircuits.com

IF/RF MICROWAVE COMPONENTS

Notes: 1. Performance and quality attributes and conditions not expressly stated in this specification sheet are intended to be excluded and do not form a part of this specification sheet. 2. Electrical specifications and performance data contained herein are based on Mini-Circuit's applicable established test performance criteria and measurement instructions. 3. The parts covered by this specification sheet are subject to Mini-Circuits standard limited warranty and terms and conditions (collectively, "Standard Terms"); Purchasers of this part are entitled to the rights and benefits contained therein. For a full statement of the Standard Terms and the exclusive rights and remedies thereunder, please visit Mini-Circuits' website at www.minicircuits.com/MCLStore/terms.jsp.

For detailed performance specs
& shopping online see web site

Surface Mount Band Stop Filter

50Ω 127.25 to 152.75 MHz

BSF-C140+



CASE STYLE: HU1186
PRICE: \$39.95 ea. QTY (1-9)

Features

- High rejection, 49 dB typical
- Good VSWR 1.2:1 typical in passband
- Aqueous washable
- Miniature shielded package

Applications

- FM radio
- Receivers / Transmitters
- Lab use

Electrical Specifications at 25°C

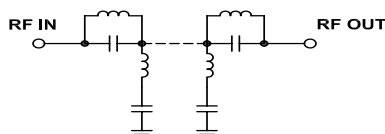
Parameter	F#	Frequency (MHz)	Min.	Typ.	Max.	Unit
Pass Band, Lower	Insertion Loss	DC-F1	DC - 96	-	0.6	dB
	VSWR	DC-F1	DC - 96	-	1.2	:1
Stop Band	Rejection	F4-F5	127.25-152.75	30	49	dB
	VSWR	F4-F5	127.25-152.75	-	6	:1
Pass Band, Upper	Insertion Loss	F2-F3	210-1000	-	0.6	dB
	VSWR	F2-F3	210-1000	-	1.2	:1

Maximum Ratings

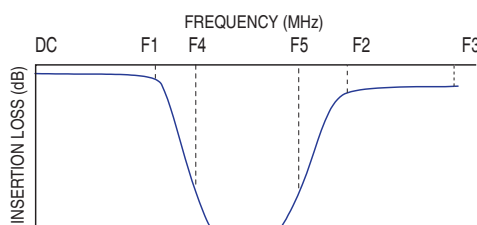
Operating Temperature	-40°C to 85°C
Storage Temperature	-55°C to 100°C
RF Power Input	250 mW max.

Permanent damage may occur if any of these limits are exceeded.

Functional Schematic



Typical Frequency Response

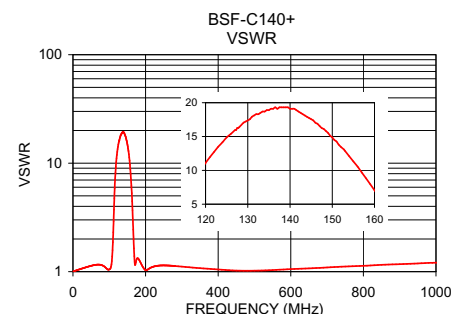
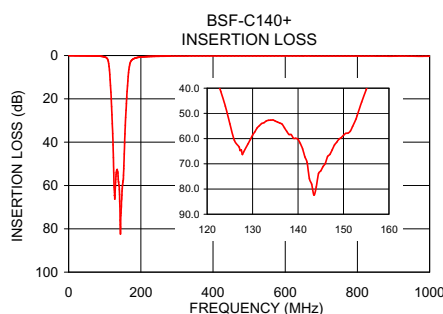


Typical Performance Data at 25°C

Frequency (MHz)	Insertion Loss (dB)	VSWR (:1)
1.00	0.02	1.01
25.00	0.07	1.07
60.00	0.14	1.15
84.00	0.28	1.13
96.00	0.50	1.05
105.00	1.07	1.11
111.00	3.70	2.31
113.00	6.67	3.73
116.00	13.94	7.05
120.00	27.38	11.09
122.00	36.05	12.71
127.25	64.73	15.96
140.00	60.33	19.11
152.75	52.23	13.09
157.00	32.20	9.69
160.00	22.15	7.05
170.00	3.68	1.23
210.00	0.55	1.07
500.00	0.21	1.02
1000.00	0.31	1.21

+ RoHS compliant in accordance with EU Directive (2002/95/EC)

The +Suffix has been added in order to identify RoHS Compliance. See our web site for RoHS Compliance methodologies and qualifications.



Mini-Circuits®
ISO 9001 ISO 14001 AS 9100 CERTIFIED

P.O. Box 350166, Brooklyn, New York 11235-0003 (718) 934-4500 Fax (718) 332-4661 The Design Engineers Search Engine Provides ACTUAL Data Instantly at minicircuits.com

IFIRF MICROWAVE COMPONENTS

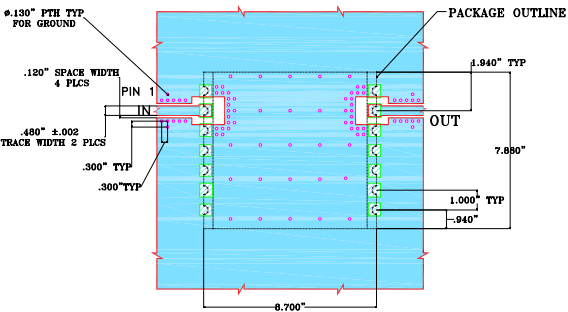
Notes: 1. Performance and quality attributes and conditions not expressly stated in this specification sheet are intended to be excluded and do not form a part of this specification sheet. 2. Electrical specifications and performance data contained herein are based on Mini-Circuit's applicable established test performance criteria and measurement instructions. 3. The parts covered by this specification sheet are subject to Mini-Circuits standard limited warranty and terms and conditions (collectively, "Standard Terms"); Purchasers of this part are entitled to the rights and benefits contained therein. For a full statement of the Standard Terms and the exclusive rights and remedies thereunder, please visit Mini-Circuits' website at www.minicircuits.com/MCLStore/terms.jsp.

For detailed performance specs & shopping online see web site

REV. OR
M131677
BSF-C140+
EDU1288
URJ
110719
Page 2 of 3

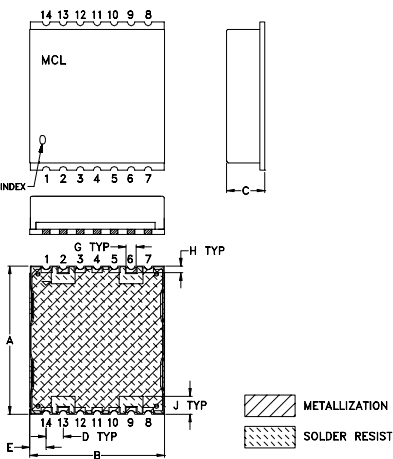
Pin Connections	
INPUT	2
OUTPUT	13
NOT CONNECTED	6,9
GROUND	1,3,4,5,7,8,10,11,12,14

Demo Board MCL P/N: TB-378+
Suggested PCB Layout (PL-347)

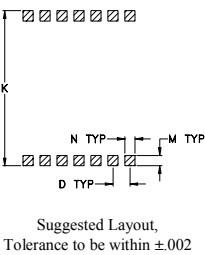


- NOTES:
- TRACE WIDTH IS SHOWN FOR ROGERS R04350B WITH DIELECTRIC THICKNESS .030"±.003". COPPER: 1/2 OZ. EACH SIDE. FOR OTHER MATERIALS TRACE WIDTH MAY NEED TO BE MODIFIED.
 - BOTTOM SIDE OF THE PCB IS CONTINUOUS GROUND PLANE.
- DENOTES PCB COPPER LAYOUT WITH SMOBC (SOLDER MASK OVER BARE COPPER)
- DENOTES COPPER LAND PATTERN FREE OF SOLDERMASK

Outline Drawing



PCB Land Pattern



Outline Dimensions (inch mm)

A	B	C	D	E	F	G	H
.870	.800	.25	.100	.097	--	.060	.040
22.10	20.32	6.35	2.54	2.46	--	1.52	1.02
J	K	L	M	N	P		wt
.105	.910	--	.060	.060	--		grams
2.67	23.11	--	1.52	1.52	--		2.85

Notes: 1. Performance and quality attributes and conditions not expressly stated in this specification sheet are intended to be excluded and do not form a part of this specification sheet. 2. Electrical specifications and performance data contained herein are based on Mini-Circuit's applicable established test performance criteria and measurement instructions. 3. The parts covered by this specification sheet are subject to Mini-Circuits standard limited warranty and terms and conditions (collectively, "Standard Terms"); Purchasers of this part are entitled to the rights and benefits contained therein. For a full statement of the Standard Terms and the exclusive rights and remedies thereunder, please visit Mini-Circuits' website at www.minicircuits.com/MCLStore/terms.jsp.