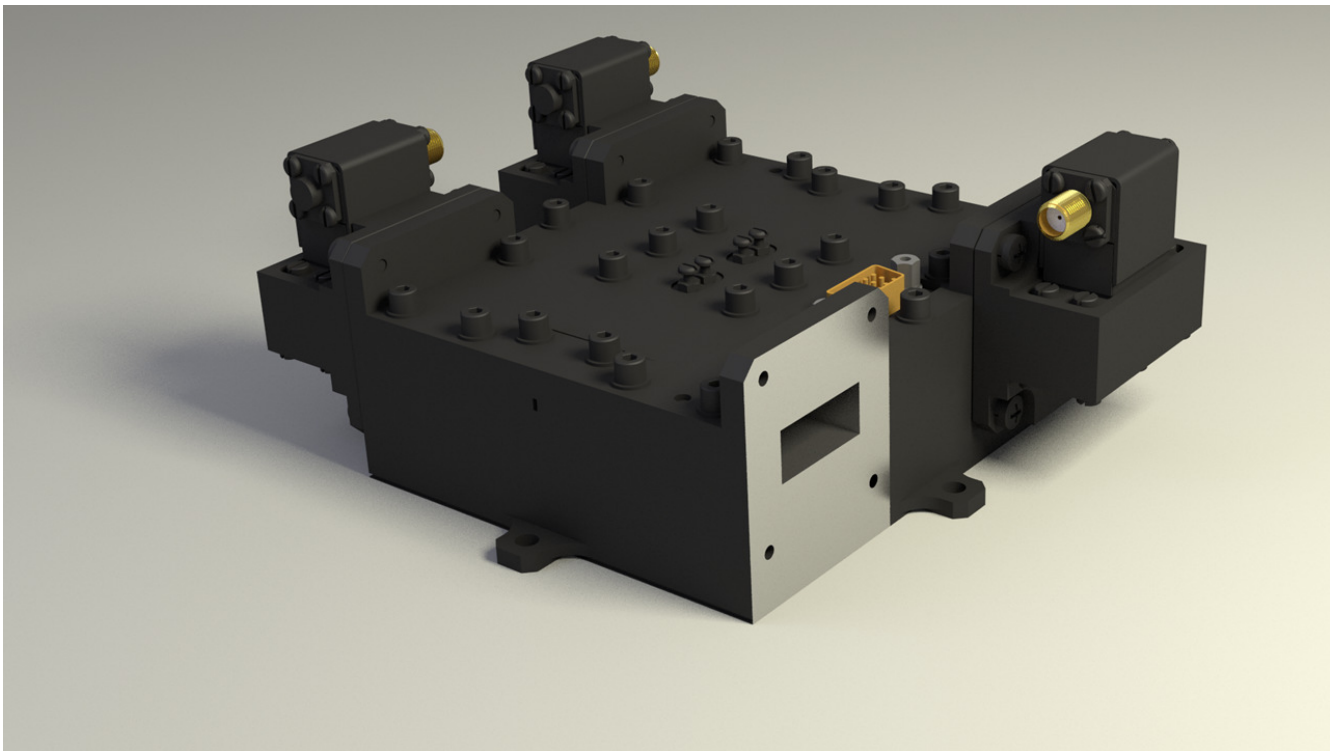


X-Band SP3T Latching Junction Switch



- Custom SP3T switch configuration with a waveguide input port and three output coaxial ports with coaxial isolators.
- Integrated electronic driver provides control and BITE functions
- Typical application is low power receive function

Specification	
Operating Frequency	X-Band
Bandwidth	7%
Return Loss (dB)	23 min
Isolation (dB)	23 min
Insertion Loss (dB)	1.0 max
Switching Time	1.5µs
Switching Rate	5kHz
Waveguide Size	WG16 / WR90
Power / Control	+/-15V / RS485
Operating Temp	-30 to +70C