

ADAPTERS, BETWEEN SERIES TYPE N / BNC

DC - 8 GHz FLANGE MOUNT



MODELS: 5330, 5331, 5332 & 5333

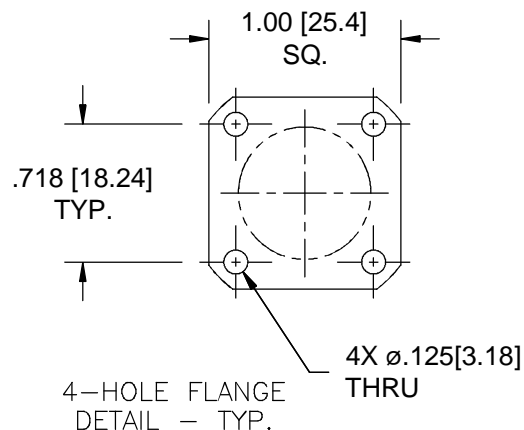
SPECIFICATIONS:

Electrical:

Frequency Range _____ DC - 8 GHz
VSWR _____ 1.20:1 Max.
Impedance _____ 50 Ohms
Operating Temp Range _____ -65°C to +125°C

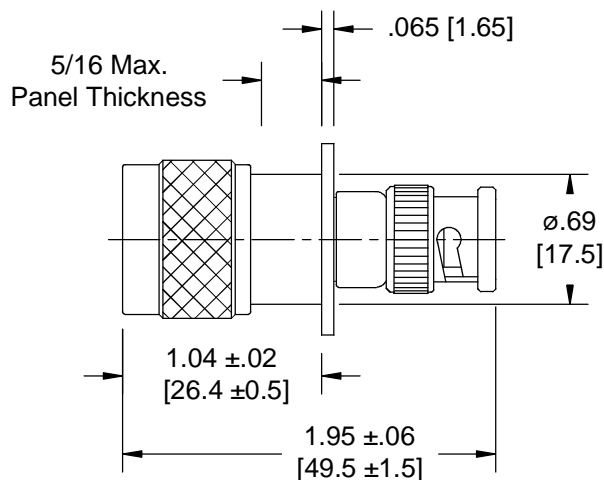
Mechanical:

BNC Connectors _____ Nickel Plated Brass
(Mates with MIL-STD-348)
Type N Connectors _____ Passivated Stainless Steel
(Mates with MIL-STD-348)
Conductors _____ Gold Plated Beryllium Copper



Model Number: **5330**

Type N Male / BNC Male
Length: 1.95 ±.06 [49.5 ±1.5]
As Pictured

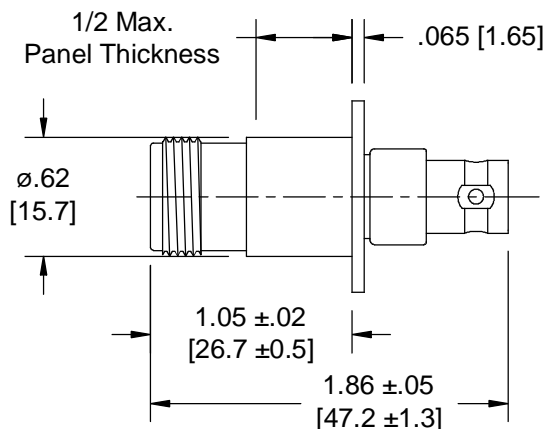


Model Number: **5331**

Type N Male / BNC Female
Length: 1.83 ±.05 [46.5 ±1.3]
Not Shown

Model Number: **5332**

Type N Female / BNC Male
Length: 1.97 ±.05 [50.0 ±1.3]
Not Shown



Model Number: **5333**

Type N Female / BNC Female
Length: 1.86 ±.05 [47.2 ±1.3]
As Pictured

Note: Dimensions in Brackets are Expressed in Millimeters and are for Reference Only.
Design specifications are subject to change without notice.
Contact factory for technical specifications before purchasing or use.

5330; REV C

300 Dino Drive • Ann Arbor, MI 48103-9457 U.S.A. • 888-244-6638 or 734-426-5553 • FAX 734-426-5557 • inmet.apitech.com