

MSA5-1.5V/1645

Multi-Sector Antenna

The most important thing we build is trust

Designed for Air to Ground Telemetry Link

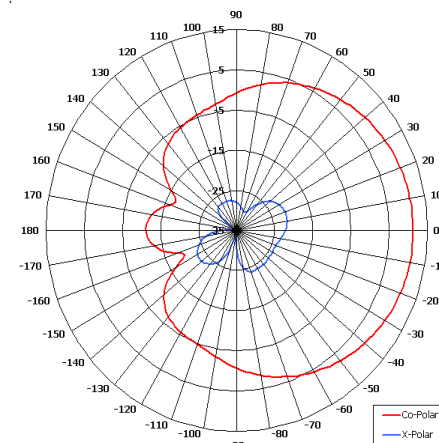
Suitable for Security Applications

Azimuth Coverage - 4 Sectors

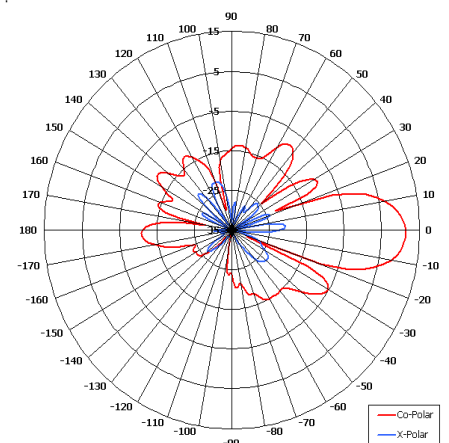
Overhead Coverage - RHC Element

Provides Internal Mounting for Electronics

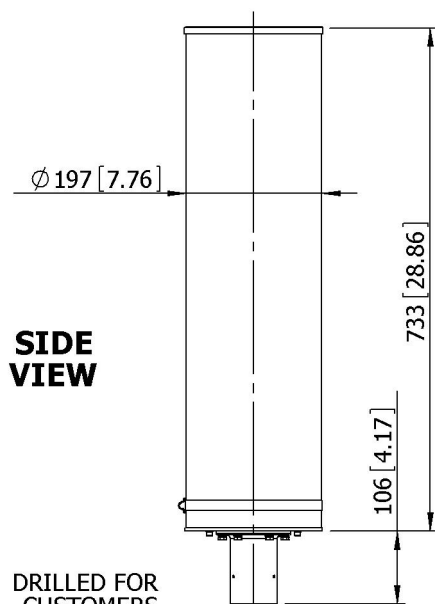
Simple Installation



Azimuth Pattern



Elevation Pattern

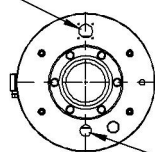


SIDE VIEW

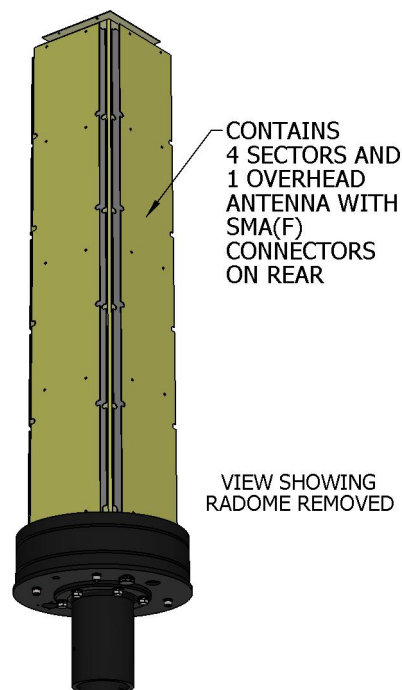
DRILLED FOR CUSTOMERS CONNECTOR

BASE VIEW

GA: 1645



N(F) CONNECTOR HOLE



VIEW SHOWING RADOME REMOVED

MOUNTS TO 2 1/4" POLE

ELECTRICAL

Frequency	1.43 - 1.52 GHz (Sectors & O/Hd)
Gain	12 dBi Nom (Sectors) 7.5 dBiC (Overhead) Typ
Polarisation	(Vertical) (Sectors) Right Hand Circular (Overhead)
Beamwidth	84° (Az) x 17.6° (El) Approx (Sec) 66° (Az) x 67° (El) Approx (O/hd)
Cross Polar	>20 dB Typ (Sector)
Axial Ratio	5 dB Typ (Overhead)
VSWR	1.67:1 Max, <1.5:1 Typ (Sector) 1.5:1 (Overhead)
Power Rating	10 W
Electrical Tilt	0°

MECHANICAL

Standard Finish	Gloss White
Mass	5 Kg
Temperature	-20° to +50°C

MOUNTING OPTIONS

Kits Available	N/A
----------------	-----

See separate data sheets

ADDITIONAL NOTES

Issued 260310

European Antennas Limited trading as Cobham Antenna Systems, Microwave Antennas

European Antennas Limited has a policy of continuous development and stress that the information provided is a guide only and does not constitute an offer or contract or part thereof. Whilst every effort is made to ensure the accuracy of the information contained in this brochure, no responsibility can be accepted for any errors or omissions.

The copyright of antenna designs and images is copyright protected and owned by European Antennas Limited.
©European Antennas Limited

For further information please contact:

Cobham Antenna Systems, Microwave Antennas

Lambda House, Cheveley,
Newmarket, Suffolk CB8 9RG, UK.

Tel +44 (0)1638 732 177

Fax +44 (0) 1638 731999

Email newmarket.sales@cobham.com